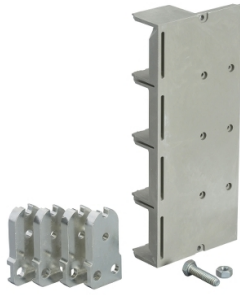


Product datasheet

Specifications



horizontal rear connections, 630 A to 1600 A, fixed circuit breaker, top mounting, 4 poles

Local distributor code:

383450144

33616

EAN Code: 3303430336167

Main

Range of product	MasterPact NT ComPacT NS630b...1600 new generation
Product or component type	Rear connection
Accessory / separate part category	Connection accessory
Range compatibility	Masterpact MasterPact NT ComPact ComPact NS630b...1600
Poles description	4P
Mounting mode	Fixed
[In] rated current	630...1600 A

Complementary

Location of connection	Rear
Localisation on device	Top
Connection position	Horizontal
Connection pitch	70 mm

Packing Units

Unit Type of Package 1	PCE
Number of Units in Package 1	1
Package 1 Height	2.0 cm
Package 1 Width	8.7 cm
Package 1 Length	28.0 cm
Package 1 Weight	2.684 kg

Logistical informations

Country of origin	FR
-------------------	----

Contractual warranty

Warranty (in months)	18
----------------------	----



Environmental Data

Schneider Electric aims to achieve Net Zero status by 2050 through supply chain partnerships, lower impact materials, and circularity via our ongoing “Use Better, Use Longer, Use Again” campaign to extend product lifetimes and recyclability.

[Environmental Data explained >](#)

[How we assess product sustainability >](#)

Use Better

Materials and Substances

Packaging made with recycled cardboard	Yes
Packaging without single use plastic	No
SCIP Number	E7a5b1d6-8e9e-451e-9030-f88377fff7b1
EU RoHS Directive	Compliant
REACH Regulation	Free of Substances of Very High Concern above the threshold
Halogen-free status	Halogen free plastic parts product
Silicone-free	Yes

Use Longer

Lifetime extension

Repair	No
--------	----

Use Again

Repack and remanufacture

Take-back	No
-----------	----