



Main

Range of product	Advantys Telefast ABE7
Product or component type	Solid state output relay sub-base
[Us] rated supply voltage	24 V DC (preactuator end) 24 V DC (PLC end)
Number of channels	16
Relay type	Soldered solid state relay

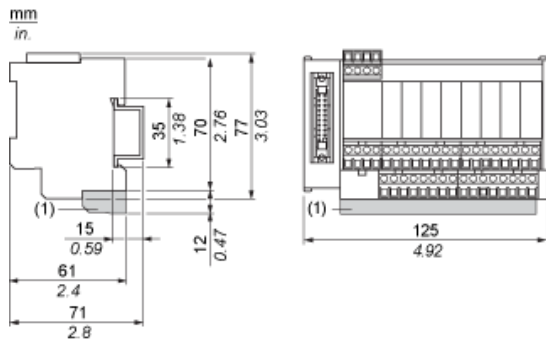
Complementary

Terminal block type	Removable
Isolation PLC/operative part	No
Fixing mode	By screws on solid plate with fixing kit By clips on 35 mm symmetrical DIN rail
Width	125 mm
Current state 0 guaranteed	0.4 mA (PLC end)
Voltage state 0 guaranteed	3.4 V (PLC end)
Current state 1 guaranteed	3.1 mA (PLC end)
Voltage state1 guaranteed	16.9 V (PLC end)
Current per output common	<= 9 A
Current per channel	0.5 A (preactuator end)
Minimum switching current	1 mA
Drop-out voltage	<= 0.3 V (preactuator end)
Maximum switching current	700 mA DC-13 700 mA DC-12
Tungsten load	10 W DC-6
Residual current	<= 0.5 mA (preactuator end)
Fault type	Overload Short-circuit
Fault indication	Without
Switchable inductive energy L/R	<= 400(U.I) ms
Circuit breaker threshold	>= 0.75 A
Response time	<= 0.2 ms from state 0 to 1 <= 0.1 ms from state 1 to 0
Switching frequency	< 0.6/LI ² Hz
Installation category	II conforming to IEC 60664-1
Tightening torque	0.6 N.m (with flat Ø 3.5 mm)
Product weight	0.4 kg

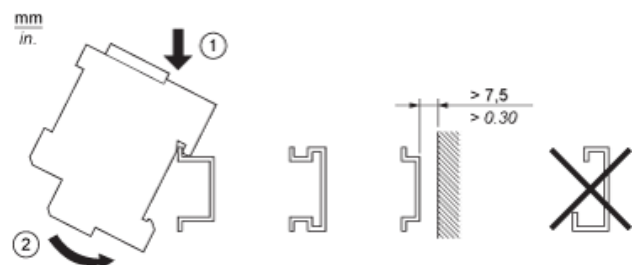
Environment

Product certifications	BV CSA DNV GL LROS (Lloyds register of shipping) UL
IP degree of protection	IP2x conforming to IEC 60529
Protective treatment	TC
Resistance to incandescent wire	750 °C, extinction time: < 30 s conforming to IEC 60695-2-11
Shock resistance	15 gn for 11 ms conforming to IEC 60068-2-27
Resistance to electrostatic discharge	8 kV (air) conforming to IEC 61000-4-2 level 3 4 kV (contact) conforming to IEC 61000-4-2 level 3
Resistance to radiated fields	10 V/m (26000000...1000000000 Hz) conforming to IEC 61000-4-3 level 3
Resistance to fast transients	2 kV conforming to IEC 61000-4-4 level 3
Ambient air temperature for operation	-5...60 °C conforming to IEC 61131-2
Ambient air temperature for storage	-40...80 °C conforming to IEC 61131-2
Pollution degree	2 conforming to IEC 60664-1

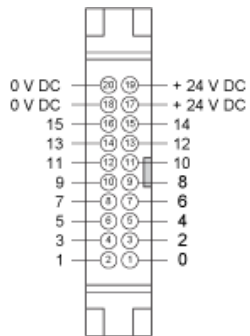
Dimensions



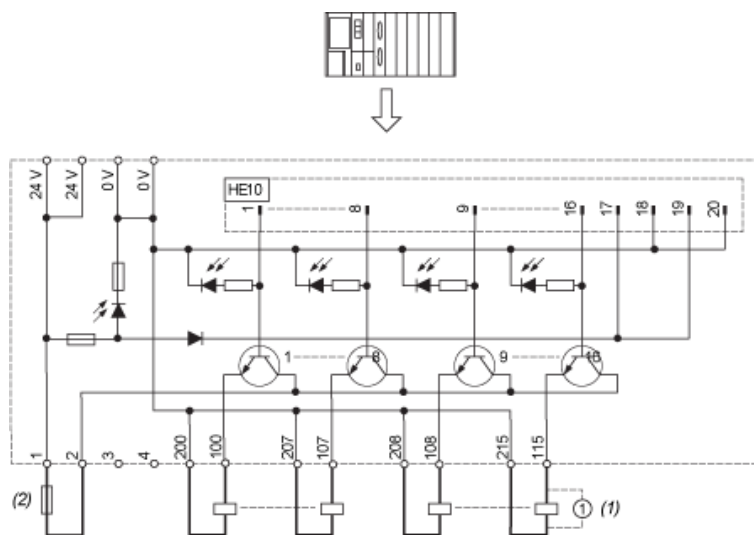
Mounting



HE10 16 Channels



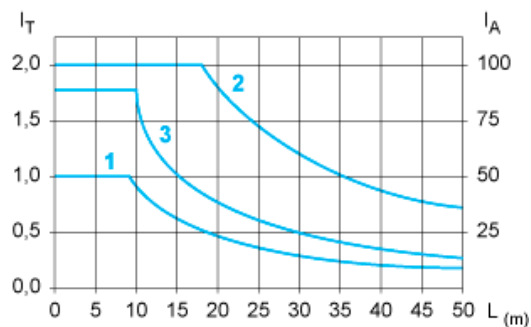
Wiring Diagram



- (1) Inductive load
- (2) AB1FUSE435U5X + quick acting FUSE 5 x 20 type F.

Curves for Determining Cable Type and Length According to the Current

16-channel Sub-base



L Cable length

I_T Total current per sub base (A)

I_A Average current per channel (mA)

(1) TSXCDP••2 and ABFH20H••0 cables with c.s.a. 0.08 mm² (AWG 28).

(2) TSXCDP••3 cables with c.s.a. 0.34 mm² (AWG 22).

(3) Cables with c.s.a. 0.13 mm² (AWG 26).

The curves are given for a voltage drop of 1 V in the cable. For n volts tolerance, multiply the length determined from the graph by n.