

Switch disconnecter 3LD3, main switch 3-polig, lu 25A operational switch at AC-23 A at 400 V 9,0 kW floor mounting Base mounting with door coupling center-hole 22,5 mm rotary operationg mechanism black 66 x66 mm with auxiliary 1NO+1NC



Model	
Product brand name	SETRON
Product designation	3LD Switch disconnecter
Design of the product	Main switch
Display version / for switch position indicator manual operation	1 ON - 0 OFF
Design of the operating mechanism	Short rotary knob
Design of handle	rotary operating mechanism, black
Type of the driving mechanism / motor drive	No
General technical data	
Number of poles	3
Type of device	fixed mounting
Type of switch	Floor mounting with door coupling
Operating frequency / maximum	50 1/h
Voltage	
Insulation voltage / rated value	690 V
Surge voltage resistance / rated value	6 kV
Protection class	

<b>Protection class IP</b>	IP65	
Protection class IP / on the front	IP65	
<b>Dissipation</b>		
<b>Power loss [W]</b>	1.1 W	
<ul style="list-style-type: none"> <li>for rated value of the current / at AC / in hot operating state / per pole</li> </ul>		
<b>Electricity</b>		
Current / at AC / rated value	25 A	
Continuous current / rated value	25 A	
Short-time current resistance (I <sub>cw</sub> ) / at 690 V / limited to 1 s / rated value	500 A	
<b>Main circuit</b>		
<b>Operating frequency</b>	50 Hz	
<ul style="list-style-type: none"> <li>initial value</li> </ul>		
<ul style="list-style-type: none"> <li>Full-scale value</li> </ul>	60 Hz	
<b>Operating power</b>	9.5 kW	
<ul style="list-style-type: none"> <li>at AC-23 A / at 400 V / rated value</li> </ul>		
<ul style="list-style-type: none"> <li>at AC-23 A / at 690 V / rated value</li> </ul>		9 kW
<ul style="list-style-type: none"> <li>at AC-3 / at 400 V / rated value</li> </ul>		7.5 kW
<ul style="list-style-type: none"> <li>at AC-3 / at 690 V / rated value</li> </ul>	7.5 kW	
<b>Operating voltage</b>	690 V	
<ul style="list-style-type: none"> <li>at AC / at 50/60 Hz / rated value</li> </ul>		
<b>Auxiliary circuit</b>		
<b>Operating voltage / of auxiliary contacts / at AC / maximum</b>	500 V	
<b>Continuous current / of the auxiliary contact / rated value</b>	10 A	
<b>Insulation voltage / of the auxiliary switch / rated value</b>	500 V	
<b>Suitability</b>		
<b>Suitability for use</b>	Yes	
<ul style="list-style-type: none"> <li>Main switch</li> </ul>		
<ul style="list-style-type: none"> <li>switch disconnecter</li> </ul>		Yes
<ul style="list-style-type: none"> <li>EMERGENCY OFF switch</li> </ul>		Yes
<ul style="list-style-type: none"> <li>safety switch</li> </ul>		Yes
<ul style="list-style-type: none"> <li>maintenance/repair switch</li> </ul>	Yes	
<b>Product details</b>		
Product feature / interlock	Yes	
Product extension / optional	No	
<ul style="list-style-type: none"> <li>motor drive</li> </ul>		
<ul style="list-style-type: none"> <li>Voltage trigger</li> </ul>	No	

Short-time current resistance (I <sub>cw</sub> ) / limited to 1 s / rated value	500 kA
Number of NC contacts	1
Number of NO contacts	1

#### Connections

<b>Type of electrical connection</b>	Box terminal
<ul style="list-style-type: none"> <li>for main current circuit</li> </ul>	

#### Requirements

<b>Design of the fuse link</b>	
<ul style="list-style-type: none"> <li>for short-circuit protection of the main circuit / required</li> </ul>	fuse gL/gG: 25 A
<ul style="list-style-type: none"> <li>for short-circuit protection of the auxiliary switch / required</li> </ul>	fuse gL/gG: 10 A

#### Mechanical Design

<b>Height</b>	60 mm
<b>Width</b>	47 mm
<b>Depth</b>	380 mm
<b>Mounting type</b>	Built-in unit fixed-mounted version
<b>Mounting type</b>	
<ul style="list-style-type: none"> <li>front mounting with 4-hole attachment</li> </ul>	No
<ul style="list-style-type: none"> <li>front mounting with central attachment</li> </ul>	Yes
<ul style="list-style-type: none"> <li>rail mounting</li> </ul>	Yes
<b>Net weight</b>	300 g

#### Environmental conditions

<b>Ambient temperature</b>	
<ul style="list-style-type: none"> <li>during operation / minimum</li> </ul>	-25 °C
<ul style="list-style-type: none"> <li>during operation / maximum</li> </ul>	55 °C

#### Certificates

<b>Equipment marking</b>	
<ul style="list-style-type: none"> <li>acc. to DIN EN 61346-2</li> </ul>	S
<ul style="list-style-type: none"> <li>acc. to DIN EN 81346-2</li> </ul>	SF

#### Declaration of Conformity



#### Further information

Information- and Downloadcenter (Catalogs, Brochures,...)  
<http://www.siemens.com/lowvoltage/catalogs>

**Industry Mall (Online ordering system)**

<https://mall.industry.siemens.com/mall/en/en/Catalog/product?mlfb=3LD3148-1TK51>

**Service&Support (Manuals, Certificates, Characteristics, FAQs,...)**

<https://support.industry.siemens.com/cs/ww/en/ps/3LD3148-1TK51>

**Image database (product images, 2D dimension drawings, 3D models, device circuit diagrams, ...)**

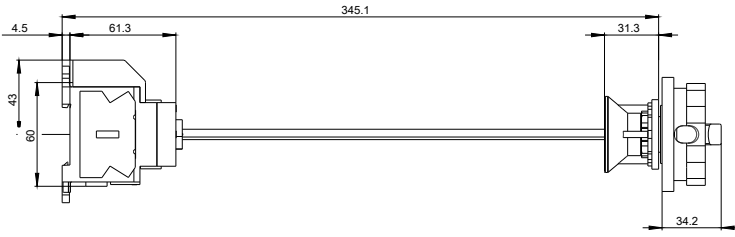
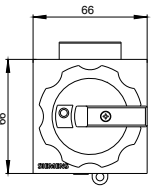
[http://www.automation.siemens.com/bilddb/cax\\_en.aspx?mlfb=3LD3148-1TK51](http://www.automation.siemens.com/bilddb/cax_en.aspx?mlfb=3LD3148-1TK51)

**CAX-Online-Generator**

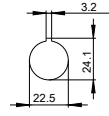
<http://www.siemens.com/cax>

**Tender specifications**

<http://www.siemens.com/specifications>



Tueri/ Door/ Porte  
Puerta/ Porta/ Porta



Boden/ Base/ Plancher/  
Base/ Pavimento/ Fundo

