

Switch disconnecter 3LD3, main switch 3-polig + N, lu 63A
operational switch at AC-23 A at 400 V 22,0 kW floor mounting Base
mounting with door coupling center-hole 22,5 mm rotary operating
mechanism red/yellow 66 x66 mm



Model	
Product brand name	SETRON
Product designation	3LD Switch disconnecter
Design of the product	EMERGENCY-STOP switch
Display version / for switch position indicator manual operation	1 ON - 0 OFF
Design of the operating mechanism	Short rotary knob
Design of handle	rotary operating mechanism, red/yellow
Type of the driving mechanism / motor drive	No
General technical data	
Number of poles	4
Type of device	fixed mounting
Type of switch	Floor mounting with door coupling
Operating frequency / maximum	50 1/h
Voltage	
Insulation voltage / rated value	690 V
Surge voltage resistance / rated value	6 kV
Protection class	

Protection class IP	IP65	
Protection class IP / on the front	IP65	
Dissipation		
Power loss [W]	4.5 W	
<ul style="list-style-type: none"> for rated value of the current / at AC / in hot operating state / per pole 		
Electricity		
Current / at AC / rated value	63 A	
Continuous current / rated value	63 A	
Short-time current resistance (I _{cw}) / at 690 V / limited to 1 s / rated value	1 000 A	
Main circuit		
Operating frequency	50 Hz	
<ul style="list-style-type: none"> initial value 		
<ul style="list-style-type: none"> Full-scale value 	60 Hz	
Operating power	22 kW	
<ul style="list-style-type: none"> at AC-23 A / at 400 V / rated value 		
<ul style="list-style-type: none"> at AC-23 A / at 690 V / rated value 		18.5 kW
<ul style="list-style-type: none"> at AC-3 / at 400 V / rated value 		18.5 kW
<ul style="list-style-type: none"> at AC-3 / at 690 V / rated value 	15 kW	
Operating voltage	690 V	
<ul style="list-style-type: none"> at AC / at 50/60 Hz / rated value 		
Auxiliary circuit		
Operating voltage / of auxiliary contacts / at AC / maximum	500 V	
Continuous current / of the auxiliary contact / rated value	10 A	
Insulation voltage / of the auxiliary switch / rated value	500 V	
Suitability		
Suitability for use	Yes	
<ul style="list-style-type: none"> Main switch 		
<ul style="list-style-type: none"> switch disconnecter 		Yes
<ul style="list-style-type: none"> EMERGENCY OFF switch 		Yes
<ul style="list-style-type: none"> safety switch 		Yes
<ul style="list-style-type: none"> maintenance/repair switch 		Yes
Product details		
Product feature / interlock	Yes	
Product extension / optional	No	
<ul style="list-style-type: none"> motor drive 		
<ul style="list-style-type: none"> Voltage trigger 	No	

Short-time current resistance (I _{cw}) / limited to 1 s / rated value	1 000 kA
Number of NC contacts	0
Number of NO contacts	0

Connections

Type of electrical connection	Box terminal
<ul style="list-style-type: none"> for main current circuit 	

Requirements

Design of the fuse link	
<ul style="list-style-type: none"> for short-circuit protection of the main circuit / required 	fuse gL/gG: 63 A
<ul style="list-style-type: none"> for short-circuit protection of the auxiliary switch / required 	fuse gL/gG: 10 A

Mechanical Design

Height	60 mm
Width	49 mm
Depth	380 mm
Mounting type	Built-in unit fixed-mounted version
Mounting type	
<ul style="list-style-type: none"> front mounting with 4-hole attachment 	No
<ul style="list-style-type: none"> front mounting with central attachment 	Yes
<ul style="list-style-type: none"> rail mounting 	Yes
Net weight	300 g

Environmental conditions

Ambient temperature	
<ul style="list-style-type: none"> during operation / minimum 	-25 °C
<ul style="list-style-type: none"> during operation / maximum 	55 °C

Certificates

Equipment marking	
<ul style="list-style-type: none"> acc. to DIN EN 61346-2 	S
<ul style="list-style-type: none"> acc. to DIN EN 81346-2 	SF

Declaration of Conformity



Further information

Information- and Downloadcenter (Catalogs, Brochures,...)
<http://www.siemens.com/lowvoltage/catalogs>

Industry Mall (Online ordering system)

<https://mall.industry.siemens.com/mall/en/en/Catalog/product?mlfb=3LD3448-OTL53>

Service&Support (Manuals, Certificates, Characteristics, FAQs,...)

<https://support.industry.siemens.com/cs/ww/en/ps/3LD3448-OTL53>

Image database (product images, 2D dimension drawings, 3D models, device circuit diagrams, ...)

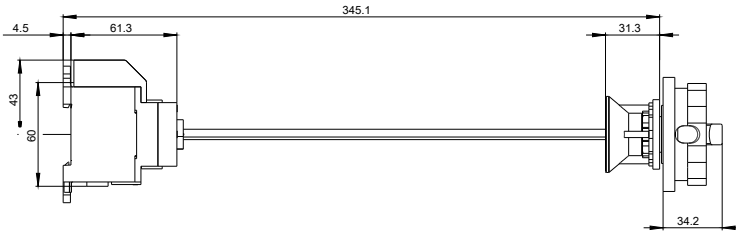
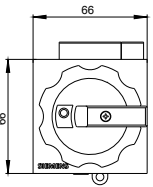
http://www.automation.siemens.com/bilddb/cax_en.aspx?mlfb=3LD3448-OTL53

CAX-Online-Generator

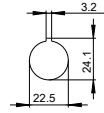
<http://www.siemens.com/cax>

Tender specifications

<http://www.siemens.com/specifications>



Tuer/ Door/ Porte
Puerta/ Porta/ Porta



Boden/ Base/ Plancher/
Base/ Pavimento/ Fundo

