

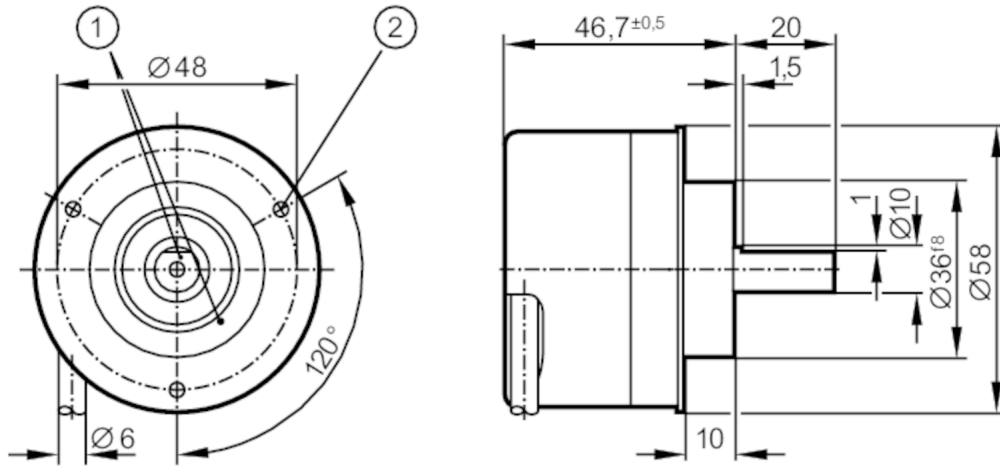
# RM6116



## Absolute multiturn encoder with solid shaft

RM-8192-S24/N1B

Status Archive



- 1 reference mark
- 2 M4 Depth 5 mm



Application	
Function principle	absolute
Revolution type	multiturn
Electrical data	
Operating voltage [V]	4.75...30 DC
Current consumption [mA]	< 250
Inputs	
Inputs	reversal of direction of rotation; reset to zero
Outputs	
Code	Gray code; (increasing code values when turned clockwise (seen on the shaft))
Code signal	Clock input; TTL-compatible signals; clock and clock (inv.) from drivers to RS 485; data output; synchronous serial; TTL-compatible signals, data, and data (inv.); incremental signals; 2 sinusoidal incremental signals (A and B) ; phase shifted by 90°; 1 Vss 512 signal periods per revolution
Measuring/setting range	
Resolution	8192 resolution; 8192 steps; 4096 revolutions; 25 bit
Interfaces	
Communication interface	SSI data interface
Operating conditions	
Ambient temperature [°C]	-40...85
Max. relative air humidity [%]	75; (briefly: 95 %)
Protection	IP 64

# RM6116



## Absolute multiturn encoder with solid shaft

RM-8192-S24/N1B

Tests / approvals		
Shock resistance		100 g (6 ms)
Vibration resistance		30 g (55...2000 Hz)
MTTF	[years]	46
Mechanical data		
Weight	[g]	457.8
Dimensions	[mm]	Ø 58 / L = 46.7
Materials		aluminium
Max. revolution, mechanical	[U/min]	12000
Max. starting torque	[Nm]	1
Reference temperature torque	[°C]	20
Shaft design		solid shaft
Shaft diameter	[mm]	10
Shaft material		steel (1.4104)
Max. shaft load axial (at the shaft end)	[N]	10
Max. shaft load radial (at the shaft end)	[N]	20
Remarks		
Remarks	Wires/pins not connected (n.c.) must not be used.	
Notes	discontinued article	
Electrical connection		
Cable: 1 m, PUR; Maximum cable length: 100 m; radial, can also be used axially		
blue	sensor (Up)	
black	reversal of direction of rotation	
red	n.c.	
white	sensor 0 V	
green	reset to zero	
brown	n.c.	
brown/green	4.75...30 V (Up)	
lilac	clock	
yellow	clock inverted	
white/green	0 V (Un)	
screen	housing	
blue / black	B+	
red/black	B-	
grey	data	
green / black	A+	
yellow / black	A-	
pink	data inverted	

# RM6116

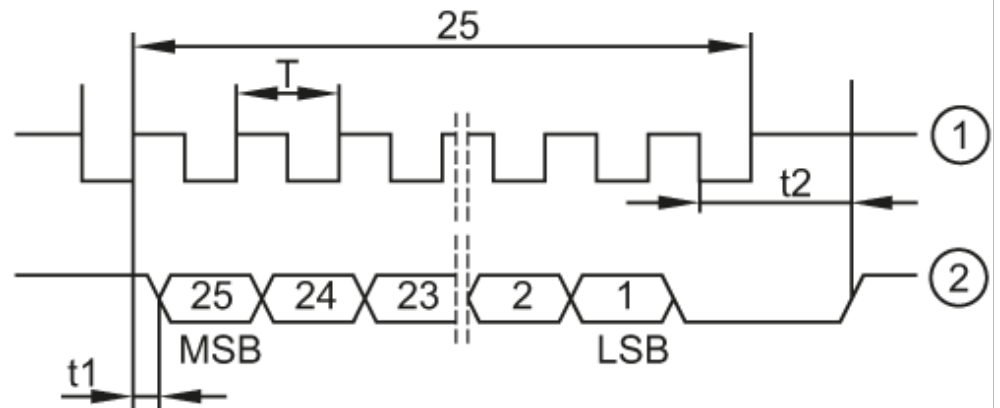


## Absolute multiturn encoder with solid shaft

RM-8192-S24/N1B

### Diagrams and graphs

Pulse diagram



- 1 clock
- 2 data

Status Archive