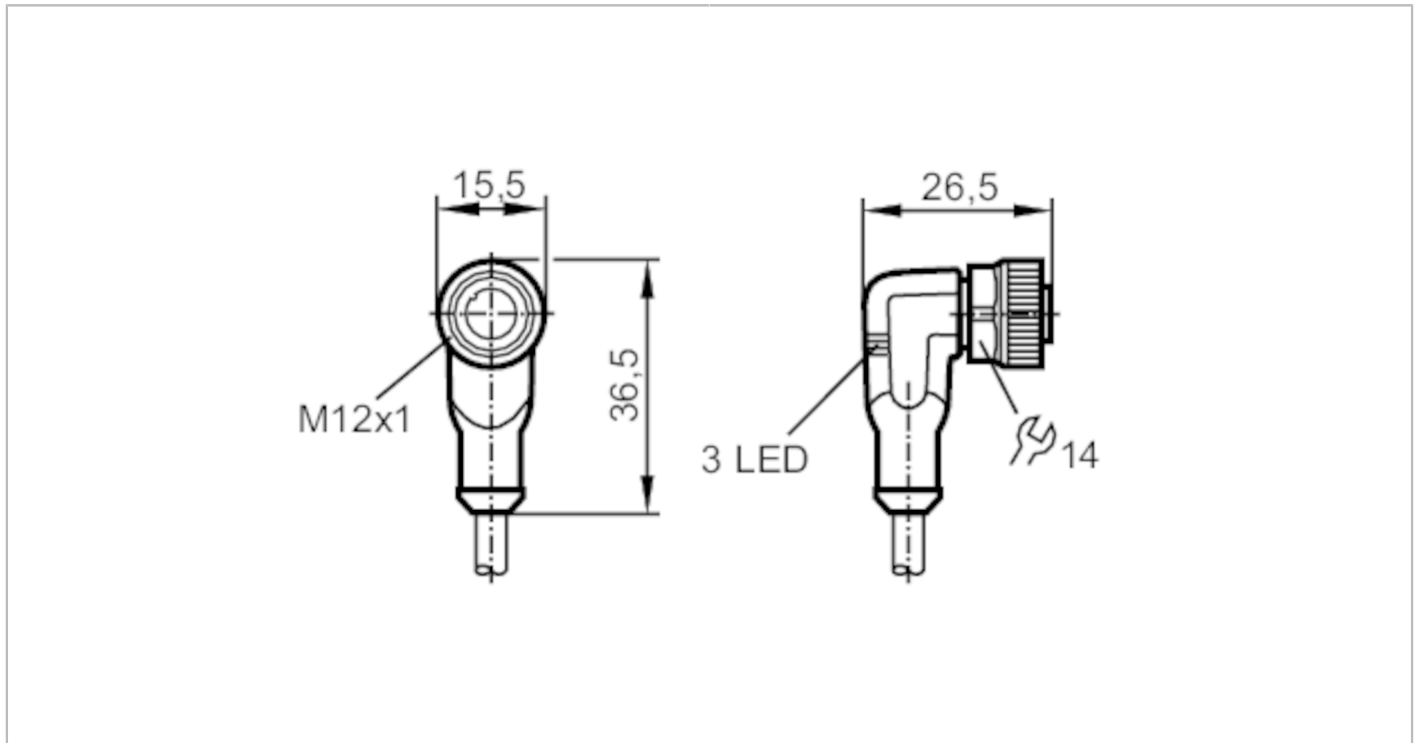


EVS008



Connecting cable with socket

ADOAH032ZDB0005E03



| Application | | |
|-----------------------------------|--|--|
| Free from silicone | yes | |
| Electrical data | | |
| Operating voltage [V] | 10...36 DC | |
| Protection class | II | |
| Max. current load total [A] | 4 | |
| Outputs | | |
| Electrical design | PNP | |
| Operating conditions | | |
| Ambient temperature [°C] | -25...70 | |
| Ambient temperature (moving) [°C] | 5...70 | |
| Protection | IP 65; IP 67 | |
| Mechanical data | | |
| Weight [g] | 169.6 | |
| Dimensions [mm] | 26.5 x 15.5 x 36.5 | |
| Materials | housing: TPU black transparent; Sealing: FKM | |
| Material nut | brass | |
| Drag chain suitability | bending radius for flexible use | min. 10 x cable diameter |
| | travel speed | max. 3.3 m/s for a horizontal travel length of 5 m and max. acceleration of 5 m/s ² |
| | bending cycles | 1 Mio. |
| | torsional strain | ± 180 °/m |
| Drag chain suitability | yes | |

EVS008



Connecting cable with socket

ADOAH032ZDB0005E03

Displays / operating elements

| | | |
|---------|------------------|-----------------|
| Display | switching status | 1 x LED, yellow |
| | operation | 1 x LED, green |

Remarks

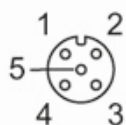
| | |
|---------------|--------|
| Pack quantity | 1 pcs. |
|---------------|--------|

Electrical connection

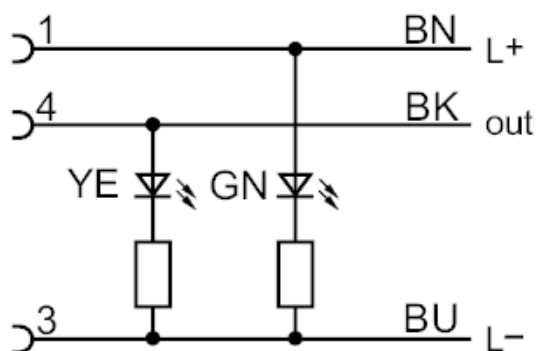
Cable: 5 m, PVC, black, Ø 4.5 mm; 3 x 0.25 mm² (14 x Ø 0.15 mm)

Electrical connection - socket

Connector: 1 x M12, angled; Locking: brass, nickel-plated; Contacts: gold-plated; Tightening torque: 0.6...1.5 Nm



Connection



Core colours :

- BK = black
- BN = brown
- BU = blue