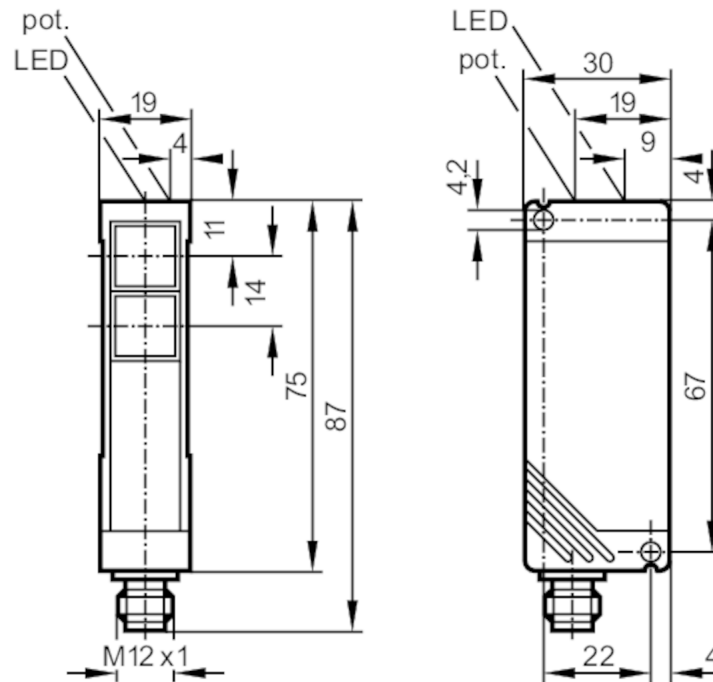


OT5013



Retro-reflective sensor

OTR-FPKG/US-100-IPF



receiver in lower lens
transmitter in upper lens



Application

Function principle: Retro-reflective sensor

Electrical data

Operating voltage	[V]	10...50 DC
Current consumption	[mA]	40; ((24 V))
Protection class		II
Reverse polarity protection		yes
Type of light		infrared light
Wave length	[nm]	880

Outputs

Electrical design		PNP
Output function		light-on/dark-on mode; (programmable)
Max. voltage drop switching output DC	[V]	2.5
Permanent current rating of switching output DC	[mA]	250
Switching frequency DC	[Hz]	150
Short-circuit protection		yes
Type of short-circuit protection		pulsed
Overload protection		yes

OT5013



Retro-reflective sensor

OTR-FPKG/US-100-IPF

Detection zone	
Range referred to prismatic reflector [m]	0.15...5; (Prismatic reflector Ø 80 E20005)
Range adjustable	yes
Max. light spot diameter [mm]	262
Light spot dimensions refer to	at maximum range

Operating conditions	
Ambient temperature [°C]	-25...60
Protection	IP 65

Tests / approvals	
EMC	EN 60947-5-2
MTTF [years]	583

Mechanical data	
Weight [g]	162.2
Housing	rectangular
Dimensions [mm]	75 x 19 x 30
Materials	PBT
Lens material	PMMA
Lens alignment	side lens

Displays / operating elements		
Display	switching status	1 x LED, yellow
	operation	1 x LED, green

Accessories	
Accessories (supplied)	Angle bracket: 1 x, E20461 screwdrivers

Remarks	
Pack quantity	1 pcs.

Electrical connection	
-----------------------	--

Connector: 1 x M12

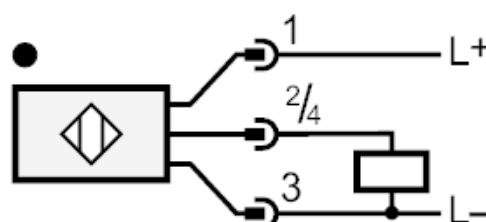
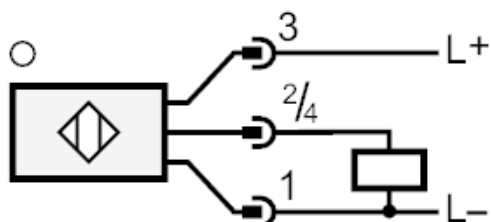




Retro-reflective sensor

OTR-FPKG/US-100-IPF

Connection



Diagrams and graphs

excess gain graph

