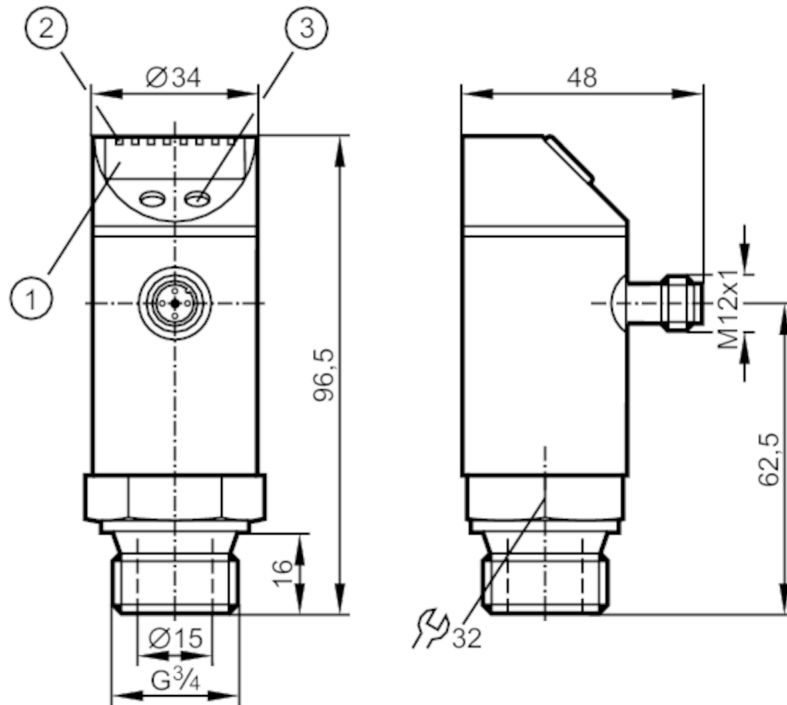


PY9951



Pressure sensor with display

PY-250-SER34-MFPKG/US/ IV



- 1 alphanumeric display 4-digit
- 2 LEDs Display unit / switching status
- 3 programming button



Application	
Media	viscous media and liquids with suspended particles
Medium temperature [°C]	-25...80
Pressure rating	400 bar 5800 psi 40 MPa
Min. bursting pressure	850 bar 12300 psi 85 MPa
Type of pressure	relative pressure
No dead space	yes
Electrical data	
Operating voltage [V]	18...36 DC; (according to EN 50178 SELV/PELV)
Current consumption [mA]	< 50
Min. insulation resistance [MΩ]	100; (500 V DC)
Protection class	III
Reverse polarity protection	yes
Overtoltage protection	yes; (< 40 V)
Power-on delay time [s]	0.3
Integrated watchdog	yes
Inputs / outputs	
Number of inputs and outputs	Number of digital outputs: 1; Number of analogue outputs: 1

PY9951



Pressure sensor with display

PY-250-SER34-MFPKG/US/ IV

Outputs			
Total number of outputs		2	
Output signal		switching signal; analogue signal; (configurable)	
Electrical design		PNP	
Number of digital outputs		1	
Output function		normally open / normally closed; (parameterisable)	
Max. voltage drop switching output DC	[V]	2	
Permanent current rating of switching output DC	[mA]	250	
Switching frequency DC	[Hz]	< 170	
Number of analogue outputs		1	
Analogue current output	[mA]	4...20	
Max. load	[Ω]	(U _b - 10 V) / 20 mA	
Analogue voltage output	[V]	0...10	
Min. load resistance	[Ω]	2000	
Short-circuit protection		yes	
Type of short-circuit protection		pulsed	
Measuring/setting range			
Measuring range		0...250 bar	0...3625 psi 0...25 MPa
Set point SP		2...250 bar	40...3620 psi 0.2...25 MPa
Reset point rP		1...249 bar	20...3600 psi 0.1...24.9 MPa
In steps of		1 bar	20 psi 0.1 MPa
Accuracy / deviations			
Switch point accuracy	[% of the final value]	< ± 0,5	
Repeatability	[% of the final value]	< ± 0,1; (with temperature fluctuations < 10 K)	
Characteristics deviation	[% of the final value]	< ± 0,5	
Hysteresis deviation	[% of the final value]	< ± 0,25	
Long-term stability	[% of the final value]	< ± 0,05	
Response times			
Delay time programmable dS, dr	[s]	0; 0,2...50	
Max. response time analogue output	[ms]	3	
Software / programming			
Parameter setting options		hysteresis / window; normally open / normally closed; switch-on/ switch-off delay; Damping; Display unit; current/voltage output	

PY9951



Pressure sensor with display

PY-250-SER34-MFPKG/US/ IV

Operating conditions		
Ambient temperature	[°C]	-20...80
Storage temperature	[°C]	-40...100
Protection		IP 67

Tests / approvals		
EMC	EN 61000-4-2 ESD	4 kV CD / 8 kV AD
	EN 61000-4-3 HF radiated	10 V/m
	EN 61000-4-4 Burst	2 kV
	EN 61000-4-5 Surge	0,5/1 kV
	EN 61000-4-6 HF conducted	10 V
Shock resistance	DIN IEC 68-2-27	50 g (11 ms)
Vibration resistance	DIN IEC 68-2-6	20 g (10...2000 Hz)

Mechanical data		
Weight	[g]	288.6
Materials		stainless steel (1.4301 / 304); stainless steel (1.4404 / 316L); PC; PBT; PEI; FKM
Materials (wetted parts)		stainless steel (1.4404 / 316L); ceramics; FKM
Min. pressure cycles		100 million
Process connection		threaded connection G 3/4 external thread

Displays / operating elements		
Display	Display unit	3 x LED, green
	switching status	LED, yellow
	function display	alphanumeric display, 4-digit
	measured values	alphanumeric display, 4-digit

Remarks		
Pack quantity		1 pcs.

Electrical connection

Connector: 1 x M12; Contacts: gold-plated



PY9951



Pressure sensor with display

PY-250-SER34-MFPKG/US/ IV

Connection

