

RB1015

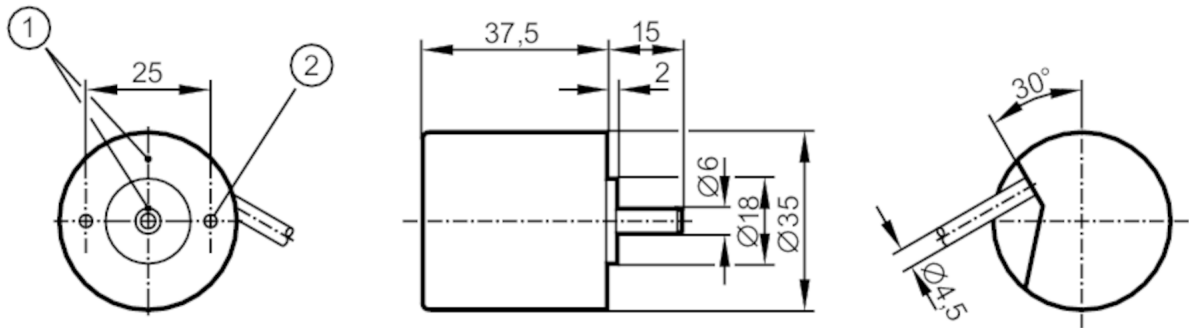


Incremental encoder with solid shaft

RB-0500-I05/L2

Status Archive

/RB3500



- 1 reference mark
- 2 M3 Depth 5 mm



Application	
Function principle	incremental
Electrical data	
Operating voltage tolerance [%]	10
Operating voltage [V]	5 DC
Current consumption [mA]	120
Outputs	
Electrical design	TTL
Max. current load per output [mA]	20
Switching frequency [kHz]	300
Phase difference A und B [°]	90
Measuring/setting range	
Resolution	500 resolution
Operating conditions	
Ambient temperature [°C]	-40...100
Note on ambient temperature	for firmly laid cable
Max. relative air humidity [%]	75; (briefly: 95 %)
Protection	IP 64
Tests / approvals	
Shock resistance	100 g (6 ms)
Vibration resistance	10 g (55...2000 Hz)
MTTF [years]	190

RB1015



Incremental encoder with solid shaft

RB-0500-I05/L2

Mechanical data		
Weight	[g]	268.4
Dimensions	[mm]	Ø 35 / L = 52.5
Materials		aluminium
Max. revolution, mechanical	[U/min]	10000
Max. starting torque	[Nm]	1
Reference temperature torque	[°C]	20
Shaft design		solid shaft
Shaft diameter	[mm]	6
Shaft material		steel (1.4104)
Max. shaft load axial (at the shaft end)	[N]	5
Max. shaft load radial (at the shaft end)	[N]	10

Remarks	
Notes	discontinued article

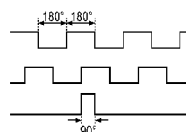
Electrical connection

Cable: 2 m, PUR; radial, can also be used axially

brown	A
green	A inverted
grey	B
pink	B inverted
red	0 index
black	0 index inverted
brown/green	L+ (Up)
white/green	L- 0 V (Un)
blue	L+ sensor
white	L- 0 V sensor
lilac	failure inverted
screen	housing

Diagrams and graphs

Pulse diagram



Output A
Output B
0 index

Status Archive

/RB3500