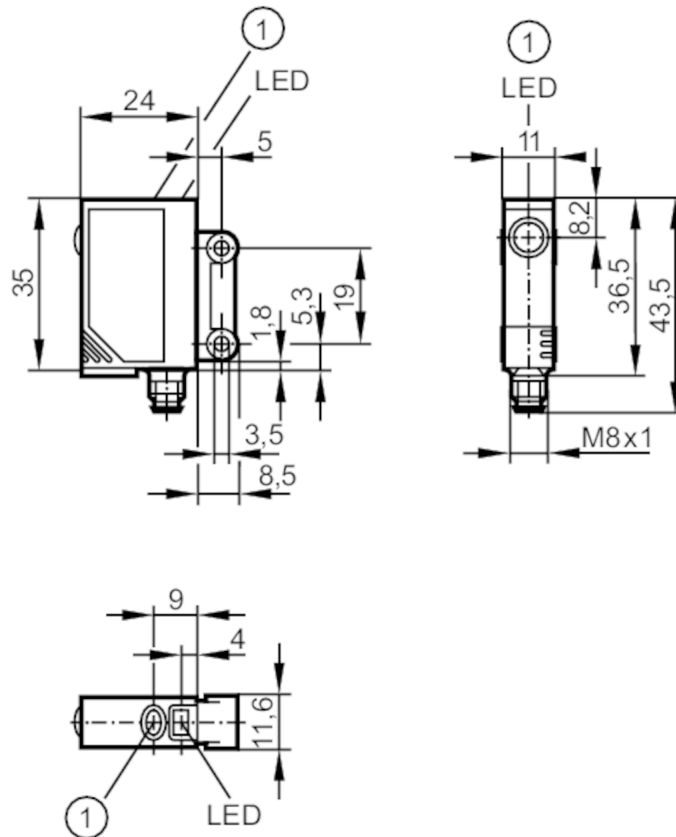


OJ5130



Through-beam sensor transmitter

OJS-00KG/SO/AS



1 pushbutton without function



Application

Function principle Through-beam sensor

Electrical data

Operating voltage [V]	10...30 DC
Current consumption [mA]	< 19
Protection class	III
Reverse polarity protection	yes
Type of light	red light
Wave length [nm]	660

Outputs

Overload protection yes

Detection zone


Transmitter / receiver	transmitter
Range [m]	< 10
Max. light spot diameter [mm]	1000
Light spot dimensions refer to	at maximum range

OJ5130



Through-beam sensor transmitter

OJS-00KG/SO/AS

Operating conditions		
Ambient temperature	[°C]	-25...60
Protection		IP 67
Tests / approvals		
EMC		EN 60947-5-2
MTTF	[years]	1764
Mechanical data		
Weight	[g]	40.6
Housing		rectangular
Dimensions	[mm]	35 x 11 x 24
Materials		housing: ABS; LED window: SEPS; pushbutton: SEPS
Lens material		glass
Lens alignment		side lens
Displays / operating elements		
Display	operation	1 x LED, green
Accessories		
Accessories (supplied)		screws: 2 x
		spring washers: 2 x
		Nuts: 2 x
Remarks		
Remarks		operating voltage "supply class 2" according to cULus
Pack quantity		1 pcs.
Electrical connection		
Connector: 1 x M8		
		

OJ5130



Through-beam sensor transmitter

OJS-00KG/SO/AS

Connection

