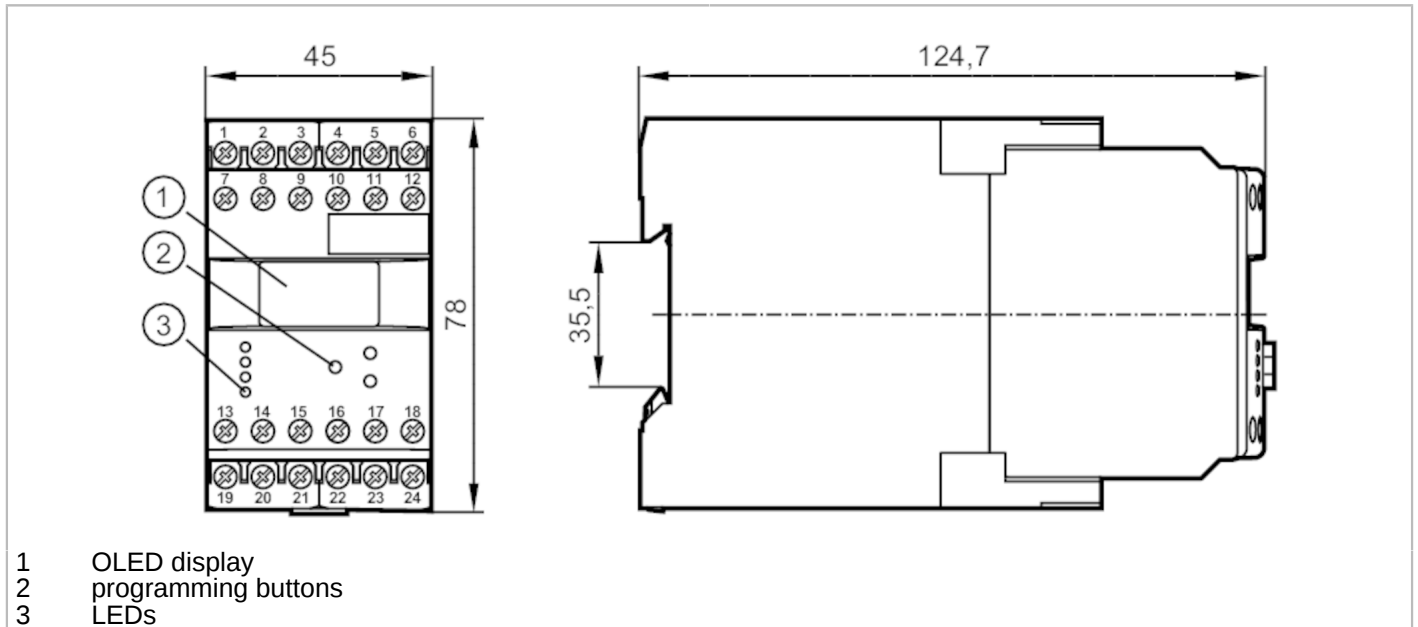


DS2505



Evaluation unit for slip and synchronous monitoring

MONITOR/FS-2 /110-240VAC/DC



- 1 OLED display
- 2 programming buttons
- 3 LEDs



Application

Application	pulse evaluation system with microprocessor for slip and synchronous monitoring; evaluation of pulse differences
-------------	--

Electrical data

Nominal voltage AC	[V]	110...240
Nominal voltage DC	[V]	27
Nominal voltage tolerance	[%]	< 10
Nominal voltage tolerance 2	[%]	20...10
Nominal frequency AC	[Hz]	50...60
Power consumption	[W]	3
Auxiliary energy for sensors DC	[V]	19.6...27.7; (SELV, ≤ 150 mA)

Outputs

Number of relay outputs	2
Contact rating	6 A (250 V AC); B300, R300

Detection zone

Sensing range adjustable	no
--------------------------	----

Measuring/setting range

Setting range Hz	[Hz]	0.1...1000
Setting range	[Imp/min]	1...60000

Operating conditions

Ambient temperature	[°C]	-40...60
Storage temperature	[°C]	-40...85
Max. relative air humidity	[%]	80; (40 °C 50 %)
Protection		IP 50
Protection rating terminals		IP 20



Evaluation unit for slip and synchronous monitoring

MONITOR/FS-2 /110-240VAC/DC

Tests / approvals		
EMC	EN 61010	2011
	EMV 89/336/EWG	
	EN 61000-6-2	2005
	EN 61000-6-4	2007

Mechanical data		
Weight	[g]	359.4
Dimensions	[mm]	78 x 45 x 124.7
Materials		plastics

Displays / operating elements		
Display	switching status	LED, green
		OLED display, 128 x 64 luminous

Remarks	
Remarks	The unit complies with overvoltage category II; degree of soiling 2

Electrical connection	
dual-chamber terminals: 2 x ...2.5 mm ² ; AWG 14	

- | | |
|----|--------------------------------|
| 1 | DC supply voltage (L-) |
| 2 | DC supply voltage (L+) |
| 3 | supply transistor outputs (L+) |
| 4 | sensor signal 1 pnp |
| 5 | DC Sensor supply (L+) |
| 6 | DC Sensor supply (L-) |
| 7 | AC supply voltage (L) |
| 8 | AC supply voltage (N) |
| 9 | not used |
| 10 | sensor signal 1 npn |
| 11 | sensor signal 2 pnp |
| 12 | sensor signal 2 npn |
| 13 | relay 1 common |
| 14 | relay 1 normally open |
| 15 | relay 1 normally closed |
| 16 | transistor output 1 pnp |
| 17 | release 1/2 pnp |
| 18 | reset 1/2 pnp |
| 19 | relay 2 common |
| 20 | relay 2 normally open |
| 21 | relay 2 normally closed |
| 22 | not used |
| 23 | not used |
| 24 | transistor output 2 pnp |