

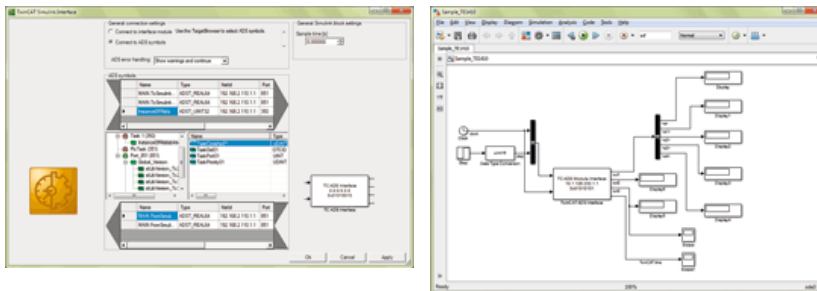


TE1410 | TC3 Interface for MATLAB®/Simulink®

The interface for MATLAB®/Simulink® provides a communication interface between MATLAB®/Simulink® and the TwinCAT 3 runtime. It supports the acquisition and visualisation of real-time parameters. It can be used both for the simulation of hardware ("software in the loop") and for the simulation of the controller ("hardware in the loop").

Features

- data exchange between fieldbus devices and MATLAB®/Simulink®, for example for the simple realisation of control loops or for HIL simulations with low real-time requirements
- Data exchange between the TwinCAT controller and MATLAB®/Simulink®; this enables controller testing by SIL simulation, for example.
- acquisition and visualisation of process data via MATLAB®/Simulink®
- configuration via graphic editor
- various data exchange options, access via:
 - symbol name of a variable
 - configurable interface module



Technical data

TE1410

Target system

Windows XP, Windows 7/8

Ordering information

TE1410

TC3 Interface for MATLAB®/Simulink®