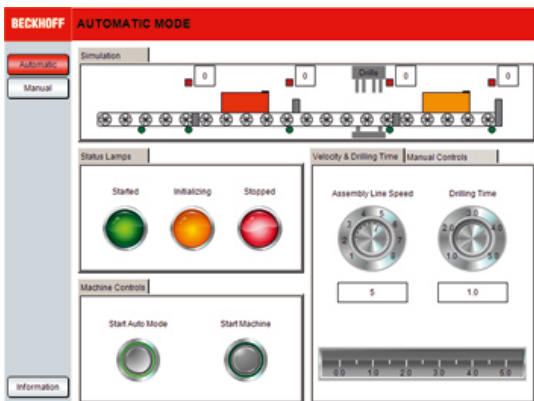


TwinCAT 3 System



TF1800 | TC3 PLC HMI

TC3 PLC HMI is a stand-alone tool for the presentation of visualisations which are created in the TwinCAT PLC development environment. They are shown in full-screen as soon as the system starts up.



Technical data	TF1800
Required	TC1200
Target system	Windows XP, Windows 7/8/10, Windows CE

Ordering information	
TF1800-0020	TC3 PLC-HMI, platform 20 (Economy)
TF1800-0030	TC3 PLC-HMI, platform 30 (Economy Plus)
TF1800-0040	TC3 PLC-HMI, platform 40 (Performance)
TF1800-0050	TC3 PLC-HMI, platform 50 (Performance Plus)
TF1800-0060	TC3 PLC-HMI, platform 60 (Mid Performance)
TF1800-0070	TC3 PLC-HMI, platform 70 (High Performance)
TF1800-0080	TC3 PLC-HMI, platform 80 (Very High Performance)
TF1800-0081	TC3 PLC-HMI, platform 81 (Many-core 5...8 cores)
TF1800-0082	TC3 PLC-HMI, platform 82 (Many-core 9...16 cores)
TF1800-0083	TC3 PLC-HMI, platform 83 (Many-core 17...32 cores)
TF1800-0084	TC3 PLC-HMI, platform 84 (Many-core 33...64 cores)
TF1800-0090	TC3 PLC-HMI, platform 90 (Other)
TF1800-0091	TC3 PLC-HMI, platform 91 (Other 5...8 cores)
TF1800-0092	TC3 PLC-HMI, platform 92 (Other 9...16 cores)
TF1800-0093	TC3 PLC-HMI, platform 93 (Other 17...32 cores)
TF1800-0094	TC3 PLC-HMI, platform 94 (Other 33...64 cores)