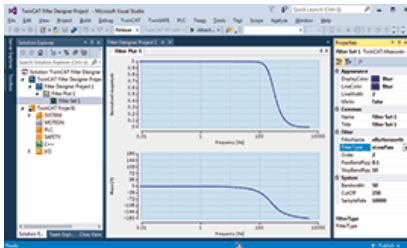




i TE1310 | TC3 Filter Designer

The TC3 Filter Designer is a graphic engineering tool for determining coefficient digital filters. In Microsoft Visual Studio® it integrates seamlessly with the existing TwinCAT engineering landscape.

Selectable filter designs are Butterworth, Chebyshev and Inverse-Chebyshev, while the possible filter types are lowpass, highpass, bandpass and bandstop. The filter coefficients can be modified graphically or by means of a tabular specification. Once the filter coefficients have been determined, they can be used in the PLC as an input for digital filter function blocks or transferred into the ELM measurement modules by drag & drop. Each channel of an ELM measurement module has two freely configurable digital filters connected in series, which as a result are very easy to adjust using the Filter Designer.



Technical data	TE1310
Required	TC1000
Target system	Windows 7/8/10
Ordering information	
TE1310	TC3 Filter Designer
i Product announcement	estimated market release 3rd quarter 2018