

Draw-out circuit breaker with slide-in module frame 3-pole, Size 1, IEC In=800 A up to 690 V, 50/60 Hz AC Icu=66 kA at 500 V Rear horizontal connection

Model		
Product brand name		SENTRON
Product designation		ACB
Design of the product		IEC 60947-2
Design of the auxiliary switch		2 NO + 2 NC
Design of the operating mechanism		Pushbutton
Type of the driving mechanism		Manual operating mechanism with mechanical closing
Type of the driving mechanism / motor drive		No
Design of the overcurrent release		ETU25B

General technical data		
Number of poles		3
Size of the circuit-breaker		1
Electrical endurance (switching cycles) / typical		20 000
Usage category		B
circuit-breaker / Design		3WL1108
Mechanical service life (switching cycles) / typical		20 000

Voltage		
Rated insulation voltage Ui	V	1 000

Protection class		
Protection class IP		IP20
Protective function of the overcurrent release		LSI

Dissipation		
Power loss [W] / for rated value of the current / at AC / in hot operating state / per pole	W	65

Electricity		
Operating current / at 45 °C / rated value	A	800
Continuous current / rated value	A	800
Adjustable pick-up value current		
<ul style="list-style-type: none"> • of the current-dependent overload release / Full-scale value 	A	800
<ul style="list-style-type: none"> • of instantaneous short-circuit trip unit / initial value 	A	16 000

<ul style="list-style-type: none"> • of instantaneous short-circuit trip unit / Full-scale value 	A	16 000
Short-time current resistance (I _{cw})		
<ul style="list-style-type: none"> • limited to 0.5 s / rated value 	kA	66
<ul style="list-style-type: none"> • limited to 1 s / rated value 	kA	50
<ul style="list-style-type: none"> • limited to 2 s / rated value 	kA	35
<ul style="list-style-type: none"> • limited to 3 s / rated value 	kA	29

Main circuit

Operating frequency		
<ul style="list-style-type: none"> • 1 / rated value 	Hz	50
<ul style="list-style-type: none"> • 2 / rated value 	Hz	60
Operating voltage		
<ul style="list-style-type: none"> • at AC / at 50/60 Hz / rated value 	V	690
Operating current		
<ul style="list-style-type: none"> • at 40 °C / rated value 	A	800
<ul style="list-style-type: none"> • at 50 °C / rated value 	A	800
<ul style="list-style-type: none"> • at 55 °C / rated value 	A	800
<ul style="list-style-type: none"> • at 60 °C / rated value 	A	800
<ul style="list-style-type: none"> • at 65 °C / rated value 	A	800
<ul style="list-style-type: none"> • at 70 °C / rated value 	A	800

Auxiliary circuit

Number of NC contacts / for auxiliary contacts		2
Number of NO contacts / for auxiliary contacts		2

Suitability

Suitability for use		Plant / motor protection
---------------------	--	--------------------------

Adjustable parameters

Adjustable pick-up value current / of the current-dependent overload release / initial value	A	320
--	---	-----

Product details

Product component		
<ul style="list-style-type: none"> • Trip indicator 		Yes
<ul style="list-style-type: none"> • Voltage trigger 		Yes
<ul style="list-style-type: none"> • undervoltage release 		No
Product extension / optional / motor drive		Yes

Product function

Product function		
<ul style="list-style-type: none"> • Ground fault protection 		No
<ul style="list-style-type: none"> • Phase failure detection 		Yes

Display and operation

Display version		without display
-----------------	--	-----------------

Short circuit

Operational short-circuit current breaking capacity (Ics)		
• at 415 V / rated value	kA	66
• at 500 V / rated value	kA	66
• at 690 V / rated value	kA	50
Maximum short-circuit current breaking capacity (Icu)		
• at 415 V / rated value	kA	66
• at 500 V / rated value	kA	66
• at 690 V / rated value	kA	50

Connections

Arrangement of electrical connectors / for main current circuit		Main terminal on the rear horizontal
Type of electrical connection / for main current circuit		busbar connection

Mechanical Design

Height	mm	460
Width	mm	320
Depth	mm	456
Mounting type		drawer unit

Environmental conditions

Ambient temperature		
• during operation / minimum	°C	-20
• during operation / maximum	°C	70
• during storage / minimum	°C	-40
• during storage / maximum	°C	70

Certificates

Reference code		
• acc. to DIN EN 61346-2		Q
• acc. to DIN EN 81346-2		Q

General Product Approval	Declaration of Conformity	Test Certificates
--------------------------	---------------------------	-------------------



CB



CCC



VDE



EG-Konf.

[Miscellaneous](#)

[Special Test Certificate](#)

Shipping Approval



ABS



BUREAU VERITAS



DNV



GL



LRS



PRS

Shipping Approval	other
-------------------	-------



RMRS

[Environmental Confirmations](#)

[Miscellaneous](#)

Further information

Industry Mall (Online ordering system)

<https://mall.industry.siemens.com/mall/en/en/Catalog/product?mlfb=3WL1108-3CB36-1GA2-Z K07>

Service&Support (Manuals, Certificates, Characteristics, FAQs,...)

<https://support.industry.siemens.com/cs/ww/en/ps/3WL1108-3CB36-1GA2-Z K07>

Image database (product images, 2D dimension drawings, 3D models, device circuit diagrams, ...)

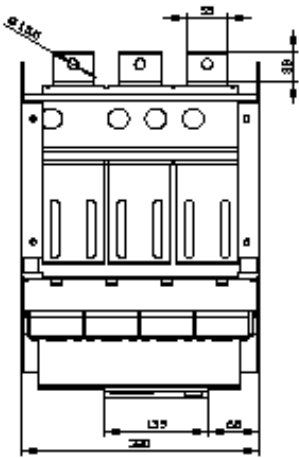
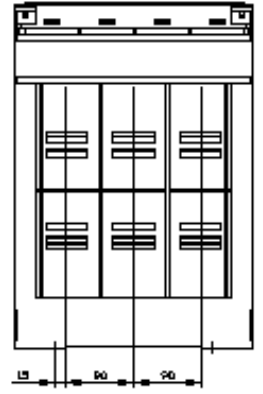
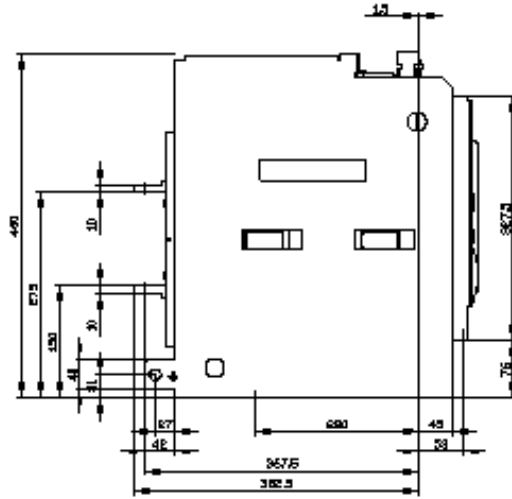
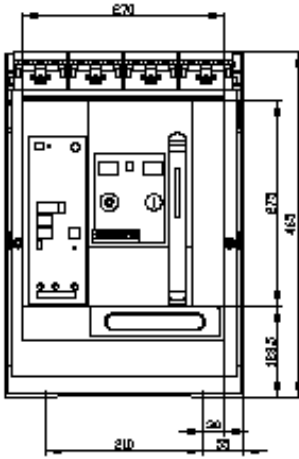
http://www.automation.siemens.com/bilddb/cax_en.aspx?mlfb=3WL1108-3CB36-1GA2-Z K07

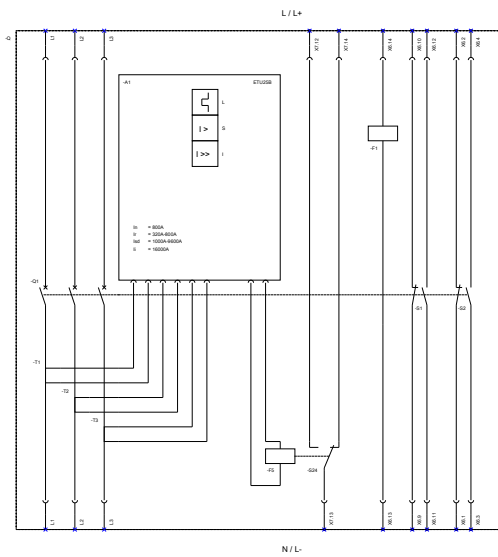
CAX-Online-Generator

<http://www.siemens.com/cax>

Tender specifications

<http://www.siemens.com/specifications>





L (Long Time Delay / Überstromschutz); S (Short Time Delay / Kurzstromschutz, kurzzeitverzüglich); I (Instantaneous / Kurzstromschutz, unverzüglich);
 F1 (Auxiliary release / Einlöser Hilfsbauteil); F2 (Magnet for trip unit / Auslösemagnet); S1 - S8 (Auxiliary switch / Hilfskontakt);
 S2 (Trip signaling switch / Einlöser-Auslösekontakt K07).

last modified:

07/18/2018