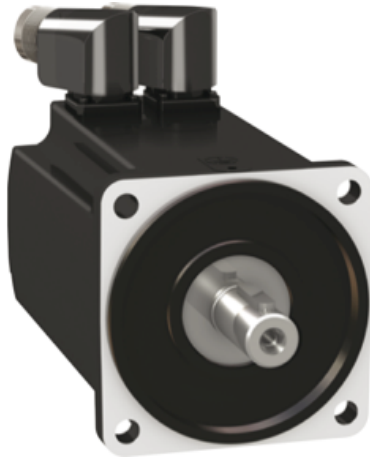


BMH1003T36A2A

servo motor BMH - 8.2 Nm - 6000 rpm - keyed shaft - without brake - IP65/IP67



Main

Product or component type	Servo motor
Device short name	BMH
Maximum mechanical speed	6000 rpm
Continuous stall torque	8.2 N.m for LXM32.D30M2 at 10 A, 230 V, single phase
Peak stall torque	22.8 N.m for LXM32.D30M2 at 10 A, 230 V, single phase
Nominal output power	1450 W for LXM32.D30M2 at 10 A, 230 V, single phase
Nominal torque	5.6 N.m for LXM32.D30M2 at 10 A, 230 V, single phase
Nominal speed	2500 rpm for LXM32.D30M2 at 10 A, 230 V, single phase
Product compatibility	LXM32.D30M2 at 230 V single phase
Shaft end	Keyed
IP degree of protection	IP65 standard IP67 with IP67 kit
Speed feedback resolution	32768 points/turn
Holding brake	Without
Mounting support	International standard flange
Electrical connection	Rotatable right-angled connectors

Complementary

Range compatibility	Lexium 32
[Us] rated supply voltage	240 V
Network number of phases	Three phase
Continuous stall current	10 A
Continuous power	2.62 W
Maximum current Irms	30 A for LXM32.D30M2
Maximum permanent current	33.85 A
Second shaft	Without second shaft end
Shaft diameter	19 mm

Shaft length	40 mm
Key width	30 mm
Feedback type	Single turn SinCos Hiperface
Motor flange size	100 mm
Number of motor stacks	3
Torque constant	0.851 N.m/A at 120 °C
Back emf constant	54.8 V/krpm at 120 °C
Number of motor poles	10
Rotor inertia	9.37 kg.cm ²
Stator resistance	0.47 Ohm at 20 °C
Stator inductance	3 mH at 20 °C
Stator electrical time constant	6.4 ms at 20 °C
Maximum radial force Fr	1050 N at 1000 rpm 830 N at 2000 rpm 730 N at 3000 rpm 660 N at 4000 rpm 610 N at 5000 rpm
Maximum axial force Fa	0.2 x Fr
Type of cooling	Natural convection
Length	192.6 mm
Centring collar diameter	95 mm
Centring collar depth	3.5 mm
Number of mounting holes	4
Mounting holes diameter	9 mm
Circle diameter of the mounting holes	115 mm
Product weight	6.5 kg

Offer Sustainability

Sustainable offer status	Green Premium product
REACH Regulation	REACH Declaration
EU RoHS Directive	Pro-active compliance (Product out of EU RoHS legal scope) EU RoHS Declaration
Mercury free	Yes
RoHS exemption information	Yes
China RoHS Regulation	China RoHS declaration
Environmental Disclosure	Product Environmental Profile
Circularity Profile	No need of specific recycling operations
WEEE	The product must be disposed on European Union markets following specific waste collection and never end up in rubbish bins

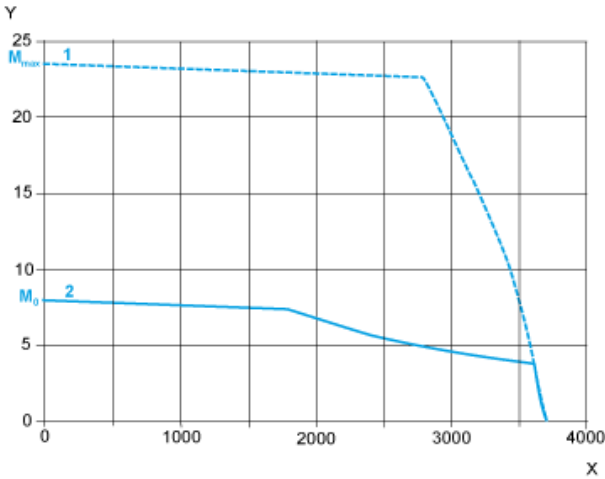
Contractual warranty

Warranty	18 months
----------	-----------

230 V Single-Phase Supply Voltage

Torque/Speed Curves

Servo motor with LXM32-D30M2 servo drive



- X Speed in rpm
- Y Torque in Nm
- 1 Peak torque
- 2 Continuous torque