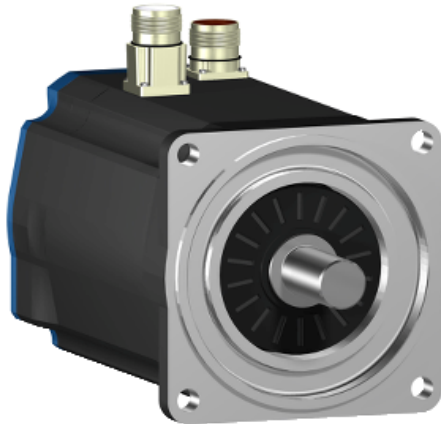


BSH1003P31A1A

AC servo motor BSH - 7.8 N.m - 2500 rpm -
keyed shaft - without brake - IP65



Main

Product or component type	Servo motor
Device short name	BSH
Maximum mechanical speed	6000 rpm
Continuous stall torque	<p>8 N.m for LXM32.D30N4 at 10 A, 400 V, three phase</p> <p>8 N.m for LXM32.D30N4 at 10 A, 480 V, three phase</p> <p>7.8 N.m for LXM05CD28M2, 200...240 V, single phase</p> <p>7.8 N.m for LXM05AD28M2, 200...240 V, single phase</p> <p>7.8 N.m for LXM05BD28M2, 200...240 V, single phase</p> <p>7.8 N.m for LXM05BD34N4, 380...480 V, three phase</p> <p>7.8 N.m for LXM05BD42M3X, 200...240 V, three phase</p> <p>7.8 N.m for LXM05CD34N4, 380...480 V, three phase</p> <p>7.8 N.m for LXM05CD42M3X, 200...240 V, three phase</p> <p>6.7 N.m for LXM15LD21M3, 230 V, three phase</p> <p>6.7 N.m for LXM15LD17N4, 230 V, three phase</p> <p>6.7 N.m for LXM15LD17N4, 400 V, three phase</p> <p>6.7 N.m for LXM15LD17N4, 480 V, three phase</p> <p>7.8 N.m for LXM15LD28M3, 230 V, three phase</p> <p>7.8 N.m for LXM15MD28N4, 400 V, three phase</p> <p>7.8 N.m for LXM15MD28N4, 480 V, three phase</p> <p>7.8 N.m for LXM15MD40N4, 400 V, three phase</p> <p>7.8 N.m for LXM15MD40N4, 480 V, three phase</p> <p>7.8 N.m for LXM05AD34N4, 380...480 V, three phase</p> <p>7.8 N.m for LXM05AD42M3X, 200...240 V, three phase</p>
Peak stall torque	<p>28.3 N.m for LXM32.D30N4 at 10 A, 400 V, three phase</p> <p>28.3 N.m for LXM32.D30N4 at 10 A, 480 V, three phase</p> <p>19.69 N.m for LXM05AD28M2, 200...240 V, single phase</p> <p>19.69 N.m for LXM05BD28M2, 200...240 V, single phase</p> <p>19.69 N.m for LXM05CD28M2, 200...240 V, single phase</p> <p>15.5 N.m for LXM15LD21M3, 230 V, three phase</p> <p>12.5 N.m for LXM15LD17N4, 230 V, three phase</p> <p>12.5 N.m for LXM15LD17N4, 400 V, three phase</p> <p>12.5 N.m for LXM15LD17N4, 480 V, three phase</p> <p>19.69 N.m for LXM15LD28M3, 230 V, three phase</p> <p>19.69 N.m for LXM15MD28N4, 400 V, three phase</p> <p>19.69 N.m for LXM15MD28N4, 480 V, three phase</p> <p>23.17 N.m for LXM15MD40N4, 400 V, three phase</p> <p>23.17 N.m for LXM15MD40N4, 480 V, three phase</p> <p>23.01 N.m for LXM05AD34N4, 380...480 V, three phase</p>

Disclaimer: This documentation is not intended as a substitute for and is not to be used for determining suitability or reliability of these products for specific user applications

	<p>23.17 N.m for LXM05AD42M3X, 200...240 V, three phase</p> <p>23.01 N.m for LXM05BD34N4, 380...480 V, three phase</p> <p>23.17 N.m for LXM05BD42M3X, 200...240 V, three phase</p> <p>23.01 N.m for LXM05CD34N4, 380...480 V, three phase</p> <p>23.17 N.m for LXM05CD42M3X, 200...240 V, three phase</p>
Nominal output power	<p>2000 W for LXM32.D30N4 at 10 A, 400 V, three phase</p> <p>2600 W for LXM32.D30N4 at 10 A, 480 V, three phase</p> <p>1100 W for LXM05AD28M2, 200...240 V, single phase</p> <p>1100 W for LXM05BD28M2, 200...240 V, single phase</p> <p>1100 W for LXM05CD28M2, 200...240 V, single phase</p> <p>1100 W for LXM05AD42M3X, 200...240 V, three phase</p> <p>1100 W for LXM05BD42M3X, 200...240 V, three phase</p> <p>1100 W for LXM05CD42M3X, 200...240 V, three phase</p> <p>1300 W for LXM15LD28M3, 230 V, three phase</p> <p>1700 W for LXM15LD17N4, 230 V, three phase</p> <p>1700 W for LXM15LD21M3, 230 V, three phase</p> <p>1800 W for LXM05AD34N4, 380...480 V, three phase</p> <p>1800 W for LXM05BD34N4, 380...480 V, three phase</p> <p>1800 W for LXM05CD34N4, 380...480 V, three phase</p> <p>2000 W for LXM15MD28N4, 400 V, three phase</p> <p>2000 W for LXM15MD40N4, 400 V, three phase</p> <p>2200 W for LXM15LD17N4, 400 V, three phase</p> <p>2200 W for LXM15MD28N4, 480 V, three phase</p> <p>2200 W for LXM15MD40N4, 480 V, three phase</p> <p>2300 W for LXM15LD17N4, 480 V, three phase</p>
Nominal torque	<p>6.3 N.m for LXM32.D30N4 at 10 A, 400 V, three phase</p> <p>6.3 N.m for LXM32.D30N4 at 10 A, 480 V, three phase</p> <p>3.7 N.m for LXM15LD17N4, 480 V, three phase</p> <p>6.73 N.m for LXM05AD28M2, 200...240 V, single phase</p> <p>6.73 N.m for LXM05BD28M2, 200...240 V, single phase</p> <p>6.73 N.m for LXM05CD28M2, 200...240 V, single phase</p> <p>4.6 N.m for LXM15MD28N4, 480 V, three phase</p> <p>4.6 N.m for LXM15MD40N4, 480 V, three phase</p> <p>4.7 N.m for LXM15LD17N4, 400 V, three phase</p> <p>5 N.m for LXM15MD28N4, 400 V, three phase</p> <p>5 N.m for LXM15MD40N4, 400 V, three phase</p> <p>5.7 N.m for LXM05AD34N4, 380...480 V, three phase</p> <p>5.7 N.m for LXM05BD34N4, 380...480 V, three phase</p> <p>5.7 N.m for LXM05CD34N4, 380...480 V, three phase</p> <p>6 N.m for LXM15LD17N4, 230 V, three phase</p> <p>6 N.m for LXM15LD21M3, 230 V, three phase</p> <p>6.3 N.m for LXM15LD28M3, 230 V, three phase</p> <p>6.73 N.m for LXM05AD42M3X, 200...240 V, three phase</p> <p>6.73 N.m for LXM05BD42M3X, 200...240 V, three phase</p> <p>6.73 N.m for LXM05CD42M3X, 200...240 V, three phase</p>
Nominal speed	<p>3000 rpm for LXM32.D30N4 at 10 A, 400 V, three phase</p> <p>4000 rpm for LXM32.D30N4 at 10 A, 480 V, three phase</p> <p>4500 rpm for LXM15LD17N4, 400 V, three phase</p> <p>6000 rpm for LXM15LD17N4, 480 V, three phase</p> <p>1500 rpm for LXM05AD28M2, 200...240 V, single phase</p> <p>1500 rpm for LXM05BD28M2, 200...240 V, single phase</p> <p>1500 rpm for LXM05CD28M2, 200...240 V, single phase</p> <p>1500 rpm for LXM05AD42M3X, 200...240 V, three phase</p> <p>1500 rpm for LXM05BD42M3X, 200...240 V, three phase</p> <p>1500 rpm for LXM05CD42M3X, 200...240 V, three phase</p> <p>2000 rpm for LXM15LD28M3, 230 V, three phase</p> <p>2500 rpm for LXM15LD17N4, 230 V, three phase</p> <p>2500 rpm for LXM15LD21M3, 230 V, three phase</p> <p>3000 rpm for LXM05AD34N4, 380...480 V, three phase</p> <p>3000 rpm for LXM05BD34N4, 380...480 V, three phase</p> <p>3000 rpm for LXM05CD34N4, 380...480 V, three phase</p> <p>4000 rpm for LXM15MD28N4, 400 V, three phase</p> <p>4000 rpm for LXM15MD40N4, 400 V, three phase</p> <p>4500 rpm for LXM15MD28N4, 480 V, three phase</p> <p>4500 rpm for LXM15MD40N4, 480 V, three phase</p>
Product compatibility	<p>LXM05AD28M2 at 200...240 V single phase</p> <p>LXM05BD28M2 at 200...240 V single phase</p> <p>LXM05CD28M2 at 200...240 V single phase</p> <p>LXM15LD21M3 at 230 V three phase</p> <p>LXM05AD42M3X at 200...240 V three phase</p> <p>LXM05BD42M3X at 200...240 V three phase</p> <p>LXM05CD42M3X at 200...240 V three phase</p> <p>LXM15LD17N4 at 230 V three phase</p> <p>LXM15LD17N4 at 400 V three phase</p>

LXM15LD17N4 at 480 V three phase
 LXM15LD28M3 at 230 V three phase
 LXM05AD34N4 at 380...480 V three phase
 LXM05BD34N4 at 380...480 V three phase
 LXM05CD34N4 at 380...480 V three phase
 LXM15MD28N4 at 400 V three phase
 LXM15MD28N4 at 480 V three phase
 LXM15MD40N4 at 400 V three phase
 LXM15MD40N4 at 480 V three phase
 LXM32.D30N4 at 400 V three phase
 LXM32.D30N4 at 480 V three phase

Shaft end	Keyed
IP degree of protection	IP65 standard IP67 with IP67 kit
Speed feedback resolution	131072 points/turn
Holding brake	Without
Mounting support	International standard flange
Electrical connection	Straight connectors

Complementary

Range compatibility	Lexium 32 Lexium 05 Lexium 15
Supply voltage max	480 V
Network number of phases	Three phase
Continuous stall current	6.6 A
Maximum continuous power	3.14 W
Maximum current Irms	28.3 A for LXM15LD21M3 28.3 A for LXM15LD28M3 28.3 A for LXM15LD17N4 28.3 A for LXM15MD28N4 28.3 A for LXM15MD40N4 28.3 A for LXM05AD28M2 28.3 A for LXM05AD42M3X 28.3 A for LXM05AD34N4 28.3 A for LXM05BD28M2 28.3 A for LXM05BD42M3X 28.3 A for LXM05BD34N4 28.3 A for LXM05CD28M2 28.3 A for LXM05CD42M3X 28.3 A for LXM05CD34N4 28.3 A for LXM32.D30N4
Maximum permanent current	28.3 A
Switching frequency	8 kHz
Second shaft	Without second shaft end
Shaft diameter	19 mm
Shaft length	40 mm
Key width	30 mm
Feedback type	Single turn SinCos Hiperface
Motor flange size	100 mm
Number of motor stacks	3
Torque constant	1.22 N.m/A at 120 °C
Back emf constant	77 V/krpm at 120 °C
Number of motor poles	8
Rotor inertia	3.22 kg.cm ²
Stator resistance	1.43 Ohm at 20 °C
Stator inductance	8.8 mH at 20 °C
Stator electrical time constant	6.15 ms at 20 °C
Maximum radial force Fr	1050 N at 1000 rpm 660 N at 4000 rpm 730 N at 3000 rpm 830 N at 2000 rpm

Maximum axial force Fa	0.2 x Fr
Type of cooling	Natural convection
Length	240.5 mm
Centring collar diameter	95 mm
Centring collar depth	3.5 mm
Number of mounting holes	4
Mounting holes diameter	9 mm
Circle diameter of the mounting holes	115 mm
Product weight	7.4 kg

Offer Sustainability

Sustainable offer status	Green Premium product
REACH Regulation	REACH Declaration
EU RoHS Directive	Pro-active compliance (Product out of EU RoHS legal scope) EU RoHS Declaration
Mercury free	Yes
RoHS exemption information	Yes
China RoHS Regulation	China RoHS declaration
Environmental Disclosure	Product Environmental Profile
Circularity Profile	No need of specific recycling operations
WEEE	The product must be disposed on European Union markets following specific waste collection and never end up in rubbish bins

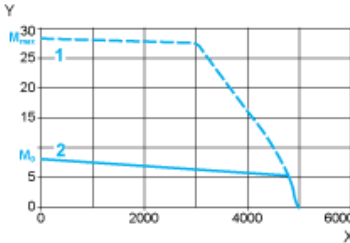
Contractual warranty

Warranty	18 months
----------	-----------

400 V 3-Phase Supply Voltage

Torque/Speed Curves

Servo motor with LXM32-D30N4 servo drive

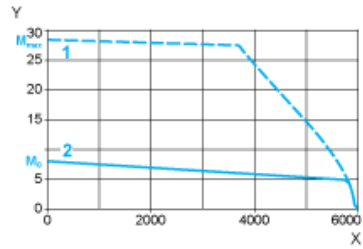


- X Speed in rpm
- Y Torque in Nm
- 1 Peak torque
- 2 Continuous torque

480 V 3-Phase Supply Voltage

Torque/Speed Curves

Servo motor with LXM32•D30N4 servo drive



- X Speed in rpm
- Y Torque in Nm
- 1 Peak torque
- 2 Continuous torque