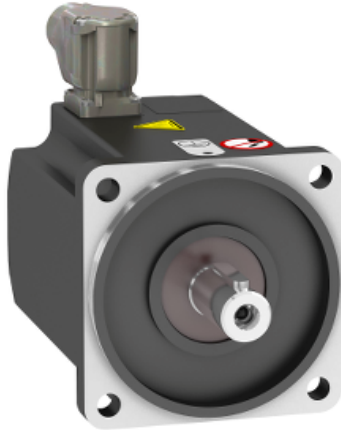


# BMP1001F3NA2A

synchronous motor - BMP - 480 VAC - 0.95 kW - IP65 - IEC

Price\* : 416.00 GBP



## Main

Product or component type	Synchronous motor
Device short name	BMP
Maximum mechanical speed	3600 rpm
Nominal output power	750 W with drive ATV32 at 0.75 kW 400 V three phase 750 W with drive ATV32 at 1.1 kW 400 V three phase 750 W with drive ATV320 at 0.75 kW 400 V three phase 750 W with drive ATV320 at 1.1 kW 400 V three phase
Nominal torque	2.39 N.m with drive ATV32 at 0.75 kW 400 V three phase 2.39 N.m with drive ATV32 at 1.1 kW 400 V three phase 2.39 N.m with drive ATV320 at 0.75 kW 400 V three phase 2.39 N.m with drive ATV320 at 1.1 kW 400 V three phase
Nominal speed	3000 rpm with drive ATV32 at 0.75 kW 400 V three phase 3000 rpm with drive ATV32 at 1.1 kW 400 V three phase 3000 rpm with drive ATV320 at 0.75 kW 400 V three phase 3000 rpm with drive ATV320 at 1.1 kW 400 V three phase
Product compatibility	Variable speed drive ATV32 at 0.75 kW 400 V three phase Variable speed drive ATV32 at 1.1 kW 400 V three phase Variable speed drive ATV320 at 0.75 kW 380...500 V three phase Variable speed drive ATV320 at 1.1 kW 380...500 V three phase
Shaft end	Keyed
IP degree of protection	IP65 standard IP67 with IP67 kit
Holding brake	Without
Mounting support	International standard flange
Electrical connection	Rotatable right-angled connector

## Complementary

Range compatibility	Altivar 32 Altivar Machine ATV320
[Us] rated supply voltage	480 V
Network number of phases	Three phase
Maximum current Irms	3.5 A with drive ATV32 at 0.75 kW 400 V three phase 4.5 A with drive ATV32 at 1.1 kW 400 V three phase 3.5 A with drive ATV320 at 0.75 kW 400 V three phase 4.5 A with drive ATV320 at 1.1 kW 400 V three phase
Nominal operating frequency	250 Hz with drive ATV32 at 0.75 kW 400 V three phase

	250 Hz with drive ATV32 at 1.1 kW 400 V three phase 250 Hz with drive ATV320 at 0.75 kW 400 V three phase 250 Hz with drive ATV320 at 1.1 kW 400 V three phase
Minimum operating frequency	25 Hz with drive ATV32 at 0.75 kW 400 V three phase 25 Hz with drive ATV32 at 1.1 kW 400 V three phase 25 Hz with drive ATV320 at 0.75 kW 400 V three phase 25 Hz with drive ATV320 at 1.1 kW 400 V three phase
Maximum operating frequency	300 Hz with drive ATV32 at 0.75 kW 400 V three phase 300 Hz with drive ATV32 at 1.1 kW 400 V three phase 300 Hz with drive ATV320 at 0.75 kW 400 V three phase 300 Hz with drive ATV320 at 1.1 kW 400 V three phase
Shaft diameter	19 mm
Shaft length	40 mm
Key width	6 mm
Motor flange size	100 mm
Torque constant	1.71 N.m/A at 40 °C
Number of motor poles	5
Number of motor stacks	1
Rotor inertia	3.19 kg.cm <sup>2</sup>
Stator resistance	4.54 Ohm at 40 °C
Stator inductance	15.3 mH for q-axis winding at 40 °C 13.28 mH for d-axis winding at 40 °C
Maximum radial force Fr	900 N at 1000 rpm 720 N at 2000 rpm 630 N at 3000 rpm 570 N at 4000 rpm
Maximum axial force Fa	0.2 x Fr
Type of cooling	Natural convection
Length	128.6 mm
Centring collar diameter	95 mm
Centring collar depth	3.5 mm
Number of mounting holes	4
Mounting holes diameter	9 mm
Circle diameter of the mounting holes	115 mm
Product weight	3.34 kg

## Offer Sustainability

RECh Regulation	<a href="#">REACH Declaration</a>
EU RoHS Directive	Pro-active compliance (Product out of EU RoHS legal scope) <a href="#">EU RoHS Declaration</a>
Mercury free	Yes
RoHS exemption information	<a href="#">Yes</a>
China RoHS Regulation	<a href="#">China RoHS declaration</a>
WEEE	The product must be disposed on European Union markets following specific waste collection and never end up in rubbish bins

## Contractual warranty

Warranty	18 months
----------	-----------