

Price\* : 469.00 GBP



### Main

Product or component type	Sinus filter
Range compatibility	Altivar Process ATV900 Altivar Process ATV600
Product specific application	Output filter

### Complementary

Maximum motor cable length	1000 m unshielded cable 500 m shielded cable
[In] rated current	25 A
Thermal losses	103 W at 4 kHz
Product compatibility	Variable speed drive ATV630 wall mount, motor: 7.5 kW, 380...480 V Variable speed drive ATV630 wall mount, motor: 11 kW, 380...480 V Variable speed drive ATV630 wall mount, motor: 4 kW, 200...240 V Variable speed drive ATV650 wall mount, motor: 7.5 kW, 380...480 V Variable speed drive ATV650 wall mount, motor: 11 kW, 380...480 V Variable speed drive ATV930 wall mount, motor: 7.5 kW, 380...480 V Variable speed drive ATV930 wall mount, motor: 11 kW, 380...480 V Variable speed drive ATV930 wall mount, motor: 4 kW, 200...240 V Variable speed drive ATV950 wall mount, motor: 7.5 kW, 380...480 V Variable speed drive ATV950 wall mount, motor: 11 kW, 380...480 V
Electrical connection	terminal block, connection capacity: 10 mm <sup>2</sup> / AWG 6
Operating altitude	<= 1000 m without current derating 1000...4000 m with current derating 1 % per 100 m
Switching frequency	2...8 kHz
Maximum output frequency	100 Hz
Maximum voltage drop at rated load	8 %
Permissible voltage	480 V AC
Max current	1.20 x nominal current (duration = 60 s)
Width	280 mm
Height	530 mm
Depth	215 mm
Product weight	20 kg

### Environment

IP degree of protection	IP20
-------------------------	------

IP21 (with kit VW3A53902)

Environmental characteristic	Biological pollution resistance class 3B1 conforming to IEC 60721-3-3 Chemical pollution resistance class 3C3 conforming to IEC 60721-3-3 Dust pollution resistance class 3S3 conforming to IEC 60721-3-3
Pollution degree	2 conforming to IEC 61800-5-1
Relative humidity	5...95 % without condensation
Ambient air temperature for operation	50...60 °C (with current derating 1.5 % per °C) -15...50 °C (without current derating)
Ambient air temperature for storage	-40...70 °C
Mechanical robustness	Shocks class 3M4 conforming to IEC 60721-3-3 Vibrations class 3M4 conforming to IEC 60721-3-3

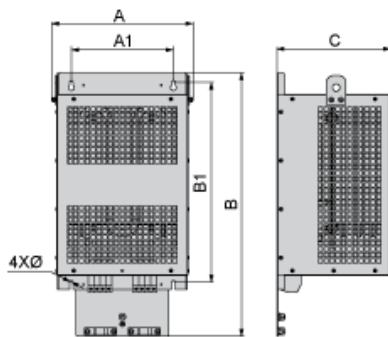
### Offer Sustainability

EU RoHS Directive	Pro-active compliance (Product out of EU RoHS legal scope) <a href="#">EU RoHS Declaration</a>
Toxic heavy metal free	Yes
Mercury free	Yes
RoHS exemption information	<a href="#">Yes</a>
China RoHS Regulation	<a href="#">China RoHS declaration</a>

### Contractual warranty

Warranty	18 months
----------	-----------

Dimensions



Dimensions in mm

A	B	C	A1	B1	Ø
280	520	215	210	411	7

Dimensions in in.

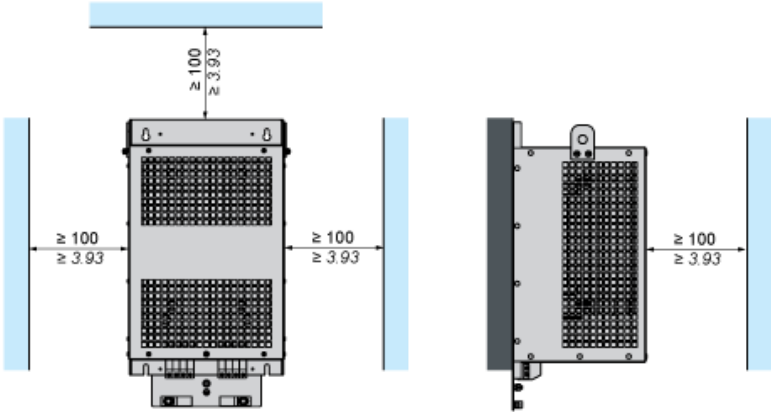
A	B	C	A1	B1	Ø
11.0	20.5	8.5	8.3	16.2	0.28

Mounting and Clearance

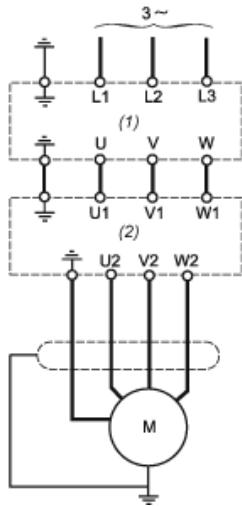


(1) Filter

mm  
in.



Recommended Schema



- (1) Drive
- (2) Filter