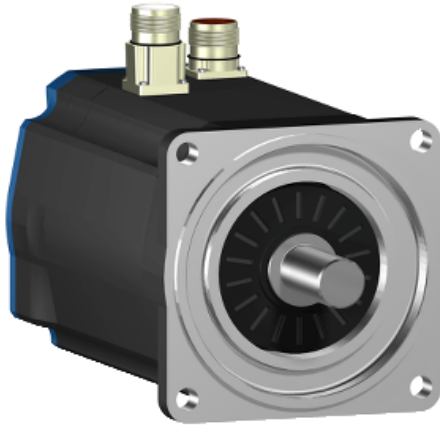


BSH1004T22A1A

AC servo motor BSH - 8.18 N.m - 3500 rpm -
untapped shaft - without brake - IP65



Main

| | |
|---------------------------|---|
| Product or component type | Servo motor |
| Device short name | BSH |
| Maximum mechanical speed | 6000 rpm |
| Continuous stall torque | 9.31 N.m for LXM15MD40N4, 230 V, three phase 8.18 N.m for LXM15LD28M3, 230 V, three phase |
| Peak stall torque | 15.7 N.m for LXM15LD28M3, 230 V, three phase 21.04 N.m for LXM15MD40N4, 230 V, three phase |
| Nominal output power | 2500 W for LXM15LD28M3, 230 V, three phase 2500 W for LXM15MD40N4, 230 V, three phase |
| Nominal torque | 7 N.m for LXM15LD28M3, 230 V, three phase 7 N.m for LXM15MD40N4, 230 V, three phase |
| Nominal speed | 3500 rpm for LXM15LD28M3, 230 V, three phase 3500 rpm for LXM15MD40N4, 230 V, three phase |
| Product compatibility | LXM15LD28M3 at 230 V three phase LXM15MD40N4 at 230 V three phase |
| Shaft end | Untapped |
| IP degree of protection | IP65 standard IP67 with IP67 kit |
| Speed feedback resolution | 131072 points/turn x 4096 turns |
| Holding brake | Without |
| Mounting support | International standard flange |
| Electrical connection | Straight connectors |

Complementary

| | |
|---------------------------|--|
| Range compatibility | Lexium 15 |
| Supply voltage max | 480 V |
| Network number of phases | Three phase |
| Continuous stall current | 12.7 A |
| Maximum continuous power | 3.64 W |
| Maximum current Irms | 34.8 A for LXM15LD28M3 61 A for LXM15MD40N4 |
| Maximum permanent current | 66.3 A |
| Second shaft | Without second shaft end |
| Shaft diameter | 24 mm |

| | |
|---------------------------------------|--|
| Shaft length | 50 mm |
| Feedback type | Multiturn SinCos Hiperface |
| Motor flange size | 100 mm |
| Number of motor stacks | 4 |
| Torque constant | 1.62 N.m/A at 120 °C 0.86 N.m/A at 120 °C |
| Back emf constant | 103 V/krpm at 120 °C 50 V/krpm at 120 °C |
| Number of motor poles | 8 |
| Rotor inertia | 4.22 kg.cm ² |
| Stator resistance | 1.81 Ohm at 20 °C |
| Stator inductance | 13 mH at 20 °C 2.9 mH at 20 °C |
| Stator electrical time constant | 6.44 ms at 20 °C 7.18 ms at 20 °C |
| Maximum radial force Fr | 1070 N at 1000 rpm 740 N at 3000 rpm 850 N at 2000 rpm |
| Maximum axial force Fa | 0.2 x Fr |
| Type of cooling | Natural convection |
| Length | 276.5 mm |
| Centring collar diameter | 95 mm |
| Centring collar depth | 3.5 mm |
| Number of mounting holes | 4 |
| Mounting holes diameter | 9 mm |
| Circle diameter of the mounting holes | 115 mm |
| Product weight | 9.2 kg |

Contractual warranty

| | |
|----------|-----------|
| Warranty | 18 months |
|----------|-----------|