



### Main

Range of product	Modicon M171/M172
Product or component type	Additional I/O module
Product specific application	HVAC and pumping solution
Total inputs/outputs	14
Discrete input number	4
Discrete output number	1 for relay outputs SPDT with independent common 3 for relay outputs SPST with same common
Discrete output current	3 A for relay
Analogue input number	4 configurable by pair
Analogue output number	2 voltage, range: 0...10 V

### Complementary

Number of port	1 CAN port - screw terminal block
Input/Output number	2 analog output(s) 4 digital output(s) 4 analog input(s) 4 digital input(s)
Discrete input logic	Sink or source (positive/negative)
Discrete input voltage	24 V AC/DC
Discrete input current	2.5 mA
Input impedance	20 kOhm
Analogue input type	voltage 0...5 V (ratiometric) current 4...20 mA voltage 0...10 V NTC temperature probe - 50...110 °C - resolution: 0.1 °C NTC temperature probe - 40...137 °C - resolution: 0.1 °C (extended) PTC temperature probe - 50...150 °C - resolution: 0.1 °C
Sensor power supply	12 V DC at 85 mA
[Us] rated supply voltage	24 V

Disclaimer: This documentation is not intended as a substitute for and is not to be used for determining suitability or reliability of these products for specific user applications

## Offer Sustainability

Sustainable offer status	Green Premium product
REACH Regulation	<a href="#">REACH Declaration</a>
REACH free of SVHC	Yes
EU RoHS Directive	Pro-active compliance (Product out of EU RoHS legal scope) <a href="#">EU RoHS Declaration</a>
Mercury free	Yes
RoHS exemption information	<a href="#">Yes</a>
China RoHS Regulation	<a href="#">China RoHS declaration</a>
Environmental Disclosure	<a href="#">Product Environmental Profile</a>
Circularity Profile	<a href="#">End of Life Information</a>
WEEE	The product must be disposed on European Union markets following specific waste collection and never end up in rubbish bins

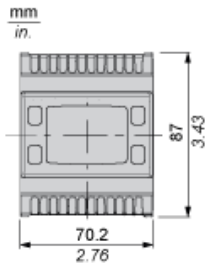
## Contractual warranty

Warranty	18 months
----------	-----------

---

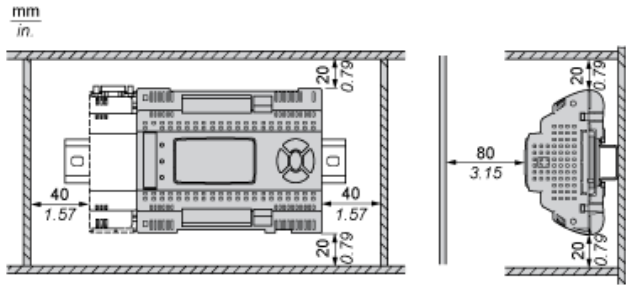
Dimensions

---

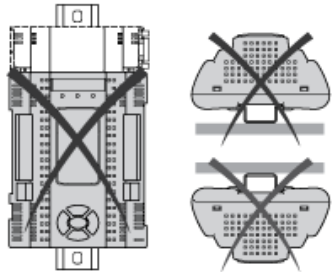


Mounting and Clearance

Clearance



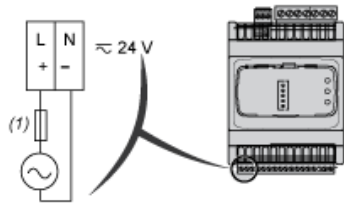
Misplacement



---

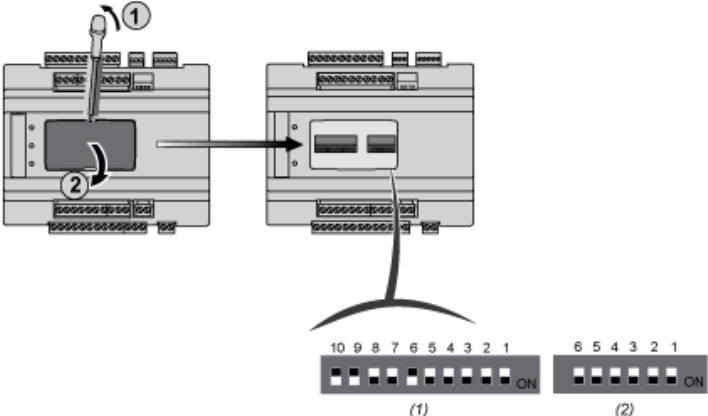
Power Supply

---



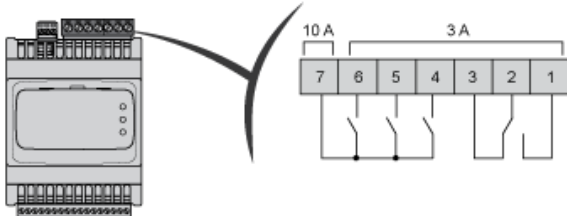
(1) Type T fuse 1.25 A

6 - 10 DipSwitches



- (1) 10 DIP SWITCH
- (2) 6 DIP SWITCH

Digital Outputs

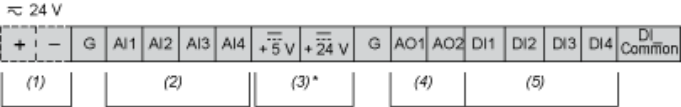
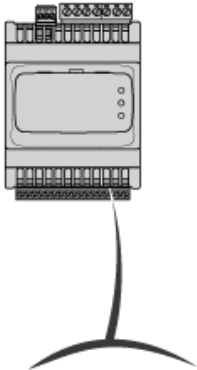


N°	Pin -out
1	DO1-N.O.
2	COMMON DO1
3	DO1-N.C.
4	DO2-N.O.
5	DO3-N.O.
6	DO4-N.O.
7	Common DO2, DO3,DO4

N.C.: Normally Closed

N.O.: Normally Open

Low Voltage I/O



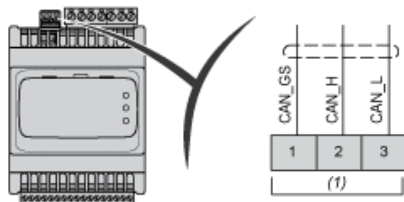
\*  $\overline{\text{---}}$  5 V: 20 mA  
 $\overline{\text{---}}$  24 V: 50 mA

- (1) Power Supply
- (2) Analog Input
- (3) Power Out
- (4) Analog Output
- (5) Digital Input

---

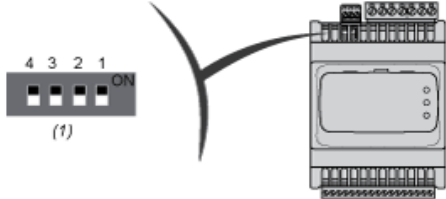
Expansion Bus (CAN)

---



(1) CAN

4 DipSwitches



(1) LOW Address