



**Model number**

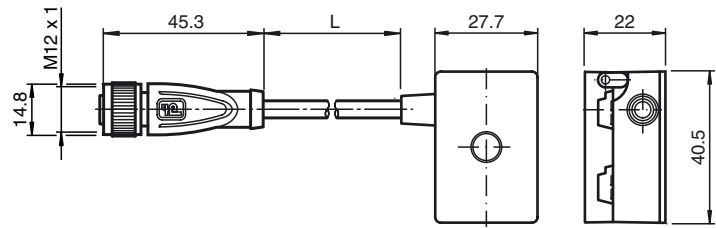
**VAZ-2T1-FK-G10-F-2M-PUR-V1-G**

G10 junction block, LED status indication, AS-Interface, and auxiliary power to 1x M12 round plug connector

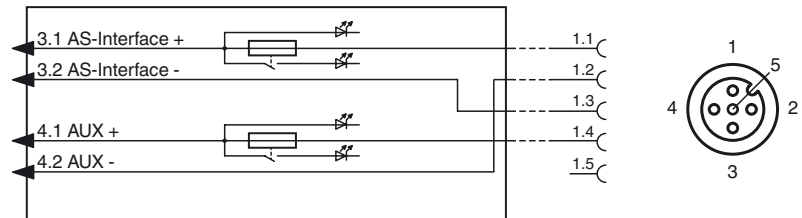
**Features**

- One piece housing
- Simple and fast mounting
- Fuses with LED display
- Gold-plated and machined contacts
- Oil and abrasion resistant PUR line appropriate for drag chains
- Immunity to vibration
- Degree of protection IP68 / IP69K
- Halogen-free

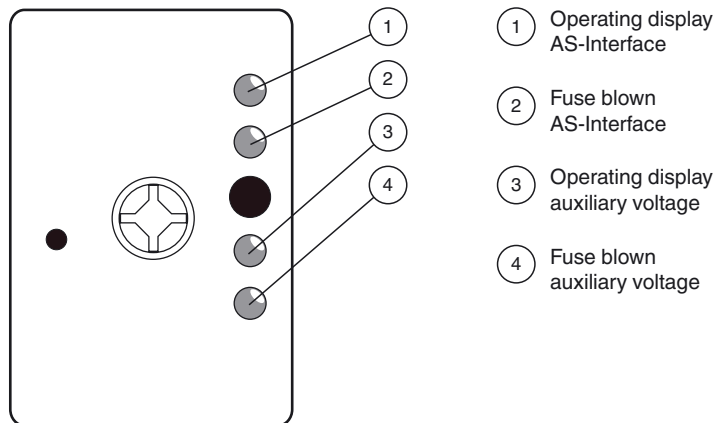
**Dimensions**



**Electrical connection**



**Indicating / Operating means**



**Technical data**

**General specifications**

Construction type	Socket, straight Flat cable terminals AS-Interface/ext. auxiliary voltage
UL File Number	E223772 "For use in NFPA 79 Applications only"

**Functional safety related parameters**

MTTF <sub>d</sub>	825 a
Mission Time (T <sub>M</sub> )	20 a
Diagnostic Coverage (DC)	0 %

**Indicators/operating means**

LED FAULT	LED red: Fuse unit blown
LED PWR	LED green: normal operation

**Electrical specifications**

Rated operating voltage	U <sub>e</sub>	10 ... 32 V PELV ( AS-Interface , ext. auxiliary voltage AUX )
Protection class		III
Short-circuit current	I <sub>k</sub>	max. 50 A

Release date: 2016-04-12 09:33 Date of issue: 2016-04-12 279017\_eng.xml

Refer to "General Notes Relating to Pepperl+Fuchs Product Information".

Surge protection	U <sub>g</sub> : Over voltage category III, safe isolated power supplies (PELV)	
<b>Output</b>		
Current loading capacity	Rated current of the fuse: 1.6 A Continuous operation: 1.2 A	
Voltage drop	U <sub>d</sub>	≤ 0.6 V
Overload protection	Fuse acc. to UL248-1, UL248-14	
<b>Ambient conditions</b>		
Ambient temperature	-25 ... 70 °C (-13 ... 158 °F)	
Storage temperature	-25 ... 85 °C (-13 ... 185 °F)	
<b>Mechanical specifications</b>		
Degree of protection	IP67 IP67 / IP68 / IP69K with flat cable VAZ-FK-S-*	
Connection	Flat cable AS-Interface: cable piercing method Flat cable ext. auxiliary voltage U <sub>AUX</sub> : Insulation penetration technology Plug connection: M12 x 1 socket (V1)	
<b>Material</b>		
Contacts	CuSn / Au	
Housing	PBT PC	
Body	black PUR	
Cable	PUR	
Mounting screw	Stainless steel 1.4305 / AISI 303	
<b>Cable</b>		
Sheath diameter	Ø4,3 mm	
Color	black	
Cores	4 x 0.34 mm <sup>2</sup>	
Length	L	2 m
Mass	100 g	
Tightening torque, fastening screws	1.65 Nm	
Tightening torque, cable gland	0.4 Nm	
<b>Compliance with standards and directives</b>		
Directive conformity		
EMC Directive 2004/108/EC	EN 61000-6-2:2005, EN 61000-6-4:2007	
Standard conformity		
Noise immunity	EN 61000-6-2:2005	
Emitted interference	EN 61000-6-4:2007	
Degree of protection	EN 60529:2000	
<b>Approvals and certificates</b>		
UL approval	cULus Listed, Type 1 enclosure	
Maximum permissible ambient temperature	≤ 55 °C (≤ 131 °F)	

## Notes

### Mounting instructions

You may screw the device onto a level mounting surface using two M4 attachment screws. The attachment screws are not included.

