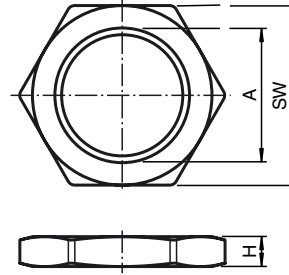




## Dimensions



## Technical data

### Mechanical specifications

Material	brass, nickel-plated
Dimensions	A = M16 x 1.5 H = 2.8 mm SW = 11 mm

### Model Number

#### LOCKNUT M8 NICKEL BRASS

Nut, nickel-plated brass

### Matching system components

#### CP-CGL-MS-1/4-M16 5pcs

Cable gland M16 for cable diameter 1 ...  
5.2 mm and 1/4" flexible metal conduit

#### CP-CGL-MS-5/16-M16 5pcs

Cable gland M16 for cable diameter 4 ...  
6.8 mm and 5/16" flexible metal conduit

#### CP-CGL-SLT-1/4-M16 5pcs

Cable gland M16 for cable diameter 1 ...  
5.2 mm and 1/4" flexible coated conduit

#### CP-CGL-SLT-5/16-M16 5pcs

Cable gland M16 for cable diameter 4 ...  
8.3 mm and 5/16" flexible coated conduit