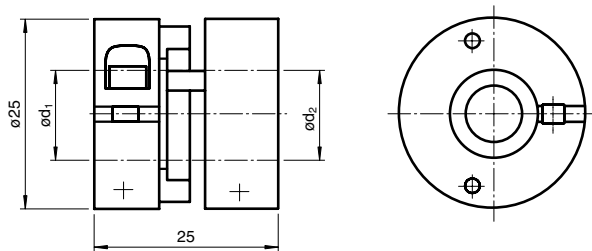




## Dimensions



### Model Number

**9410 12\*12**

Precision coupling

### Features

- Precision coupling

## Technical data

### Mechanical specifications

Shaft diameter	d1 = 12 mm , d2 = 12 mm
Material	Delrin 107, AlMgSi1, hard coated
Mass	25 g
Rotational speed	max. 15000 min <sup>-1</sup>
Max. torque	1 Nm
Tightening torque, fastening screws	1.3 Nm
Radial offset	max. ± 0.5 mm
Axial offset	max. ± 0.3 mm
Angle error	max. ± 1.5 °
Torsional rigidity	50 Nm / rad
Moment of inertia	20 kg m <sup>2</sup> x 10 <sup>-7</sup>
Mounting	clamping flange