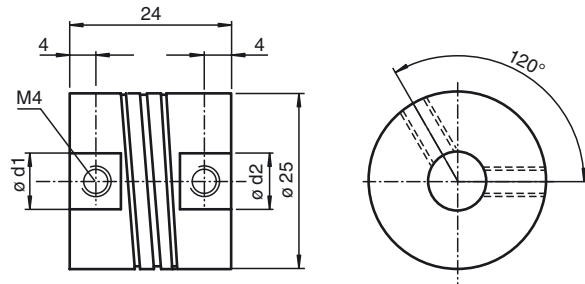




## Dimensions



## Model Number

**KW-6/6 24mm**

Helical coupling

## Features

- Universally suitable for backlash-free rotation transmission
- Vibration- isolating
- Optimall misalignment compensation
- Medium torsion spring stiffness
- Small reset forces
- No moving parts, fabricated in one piece
- Suitable for vacuum

## Technical data

### Ambient conditions

Operating temperature -30 ... 150 °C (-22 ... 302 °F)

### Mechanical specifications

Shaft diameter	d1 = 6 mm , d2 = 6 mm
Material	anodized aluminum
Mass	35 g
Rotational speed	max. 8000 min <sup>-1</sup>
Max. torque	1 Nm
Radial offset	max. ± 0.3 mm
Axial offset	max. ± 0.5 mm
Angle error	max. ± 4 °
Torsion spring stiffness	18 Nm / rad
Radial spring stiffness	50 N / mm
Moment of inertia	30 kg m <sup>2</sup> x 10 <sup>-7</sup>
Mounting	clamp screws M4 x 6, DIN 916
Tightening torque of clamping screws	max. 1.2 Nm