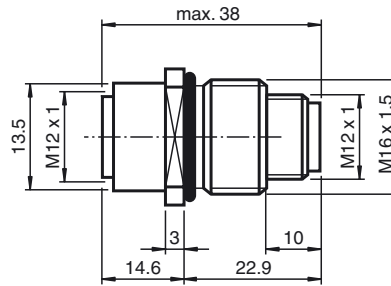




Dimensions



Model Number

V15-M16-V15

Switch cabinet feedthrough, M12/M16, 5-pin

Features

- Front/screw mounting
- Suitable for 2-, 3- and 4-wire technology
- EMC shielded

Technical data

General specifications

Number of pins 5

Electrical specifications

Operating voltage U_B max. 60 V AC/ DC

Operating current I_B max. 4 A

Ambient conditions

Ambient temperature -25 ... 85 °C (-13 ... 185 °F)

Pollution degree 3

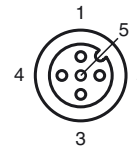
Mechanical specifications

Degree of protection IP67

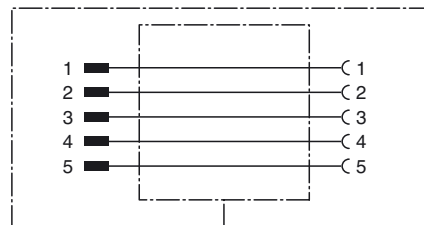
Cable

Length L 38 mm

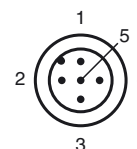
Electrical connection



Electrical connection

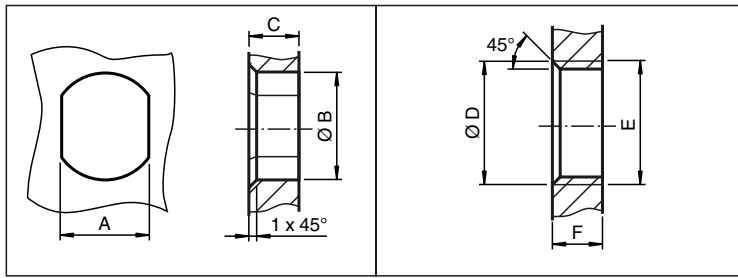


Mechanical arrangement



Release date: 2017-11-20 15:31 Date of issue: 2017-11-27 292040_eng.xml

Installation Note



	A	B	C	D	E	F
M8	7.1 ^{+0.1}	Ø 8.2 ^{+0.1}	2 - 4 mm	-	M8x0.5	2 - 4 mm
M12	11 ^{+0.1}	Ø 12.2 ^{+0.1}	< 4 mm	-	M12x1	< 4.5 mm
M16	13.5 ^{+0.1}	Ø 16.1	< 4.5 mm	Ø 17 ^{+0.2}	M16x1.5	> 2.5 mm
M20	13.5 ^{+0.1}	Ø 20.1	-	Ø 20 ^{+0.2}	M20x1.5	< 6 mm
PG9	13.5 ^{+0.1}	Ø 15.3 ^{+0.1}	< 4.5 mm	Ø 16	PG9	> 2.5 mm
PG13.5	18.8 ^{+0.1}	Ø 20.5 ^{+0.1}	-	Ø 22 ^{±0.1}	PG13.5	-