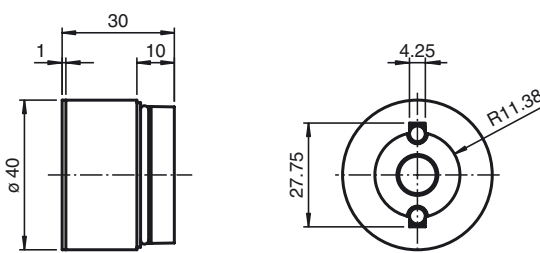




## Dimensions



### Model number

**VAZ-MH-BASE-40MM**

Adapter for floor mounting

### Features

- Modular design

### Matching system components

**VAZ-CLAMP-40MM-IO**

Signal tower connection element IO-Link with cover

**VAZ-CLAMP-40MM**

Stack light terminal base with cover plate

## Technical data

### General specifications

Color grey

### Ambient conditions

Ambient temperature -30 ... 60 °C (-22 ... 140 °F)

### Mechanical specifications

Degree of protection IP66

Cable entry Through hole

Material PC

Cable

Sheath diameter max. 9 mm

Mass 21 g

Mounting Floor mounting, wall mounting