



Model Number

NJ2-12GM-N-Y08766

Features

- Comfort series
- 2 mm flush

Technical Data

General specifications

| | |
|----------------------------|----------------------|
| Switching function | Normally closed (NC) |
| Output type | NAMUR |
| Rated operating distance | s_n 2 mm |
| Installation | flush |
| Assured operating distance | s_a 0 ... 1.62 mm |
| Reduction factor r_{AI} | 0.4 |
| Reduction factor r_{Cu} | 0.3 |
| Reduction factor r_{304} | 0.85 |
| Output type | 2-wire |

Nominal ratings

| | | |
|------------------------------|-------|---------------|
| Nominal voltage | U_o | 8 V |
| Switching frequency | f | 0 ... 2000 Hz |
| Current consumption | | |
| Measuring plate not detected | | ≥ 3 mA |
| Measuring plate detected | | ≤ 1 mA |

Functional safety related parameters

| | |
|--------------------------------|--------|
| MTTF _d | 5887 a |
| Mission Time (T _M) | 20 a |
| Diagnostic Coverage (DC) | 0 % |

Ambient conditions

| | |
|---------------------|---------------------------------|
| Ambient temperature | -25 ... 100 °C (-13 ... 212 °F) |
|---------------------|---------------------------------|

Mechanical specifications

| | |
|----------------------|-----------------------------------|
| Connection type | cable PVC , 5 m |
| Core cross-section | 0.34 mm ² |
| Housing material | Stainless steel 1.4305 / AISI 303 |
| Sensing face | PBT |
| Degree of protection | IP67 |
| Cable | |
| Bending radius | > 10 x cable diameter |

General information

| | |
|---------------------------|-------------------------|
| Use in the hazardous area | see instruction manuals |
| Category | 2G |

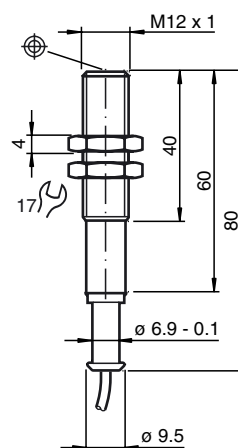
Compliance with standards and directives

| | |
|---------------------|---|
| Standard conformity | |
| NAMUR | EN 60947-5-6:2000 IEC 60947-5-6:1999 |
| Standards | |
| | EN 60947-5-2:2007 IEC 60947-5-2:2007 |

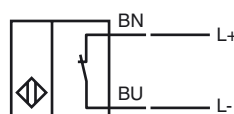
Approvals and certificates

| | |
|--------------|--------------------------------|
| UL approval | cULus Listed, General Purpose |
| CSA approval | cCSAus Listed, General Purpose |


Dimensions




Electrical Connection



Equipment protection level Gb

| | | |
|--|--|---|
| CE marking | CE 0102 | |
| ATEX marking |  II 2G Ex ia IIC T6...T1 Gb The Ex-related marking can also be printed on the enclosed label. | |
| Standards | EN 60079-0:2012+A11:2013, EN 60079-11:2012 Ignition protection "Intrinsic safety" Use is restricted to the following stated conditions | |
| Appropriate type | NJ 2-12GM-N... | |
| Effective internal capacitance | C_i | $\leq 30 \text{ nF}$; a cable length of 10 m is considered. |
| Effective internal inductance | L_i | $\leq 50 \text{ }\mu\text{H}$; a cable length of 10 m is considered. |
| Maximum permissible ambient temperature T_{amb} | Details of the correlation between the type of circuit connected, the maximum permissible ambient temperature, the temperature class, and the effective internal reactance values can be found on the EU-type examination certificate. | |

Special conditions**Equipment protection level Da**

| | | |
|--------------------------------|---|--|
| CE marking | CE 0102 | |
| ATEX marking |  II 1D Ex ia IIIC T135°C Da The Ex-related marking can also be printed on the enclosed label. | |
| Standards | EN 60079-0:2012+A11:2013, EN 60079-11:2012 Ignition protection "Intrinsic safety" Use is restricted to the following stated conditions | |
| Appropriate type | NJ 2-12GM-N... | |
| Effective internal capacitance | C_i | $\leq 30 \text{ }\mu\text{F}$ A cable length of 10 m is considered. |
| Effective internal inductance | L_i | $\leq 50 \text{ }\mu\text{H}$ A cable length of 10 m is considered. |

Special conditions