



**Model Number**

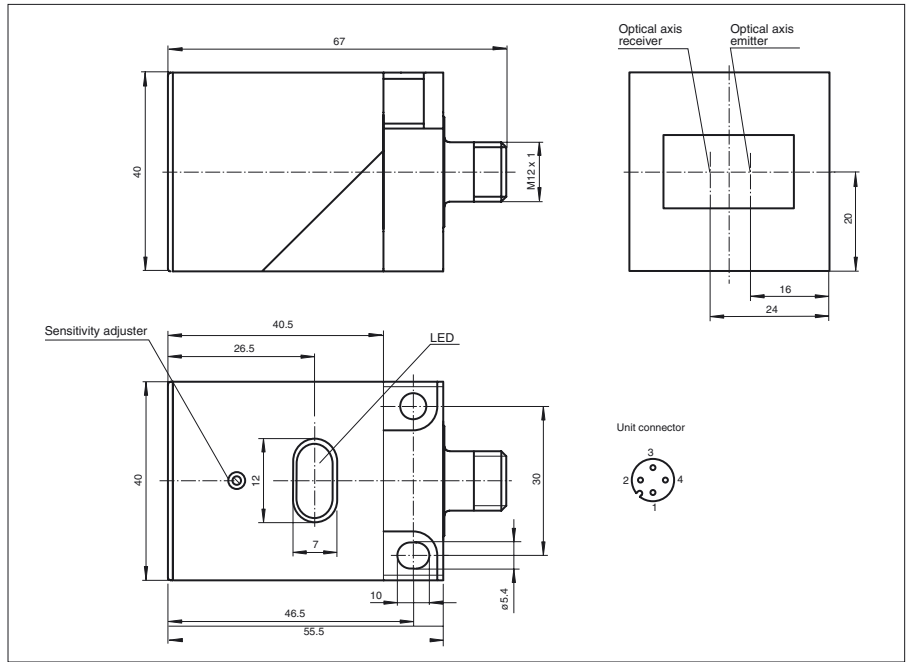
**OBT400-L2-E2-V1**

Diffuse mode sensor  
with 4-pin, M12 connector

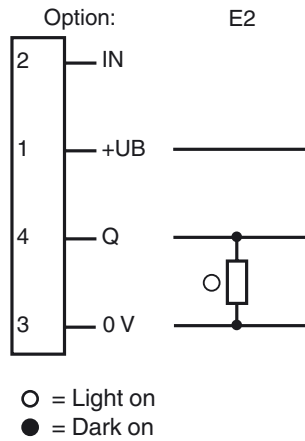
**Features**

- Pre-fault indication
- Visible red light
- Positioning of the sensor head is possible in two planes
- Degree of protection IP67
- Mounting only with one tool: the screwdriver

**Dimensions**



**Electrical connection**



Release date: 2019-11-27 14:20 Date of issue: 2019-11-27 087371\_eng.xml

Refer to "General Notes Relating to Pepperl+Fuchs Product Information".

Pepperl+Fuchs Group  
www.pepperl-fuchs.com

USA: +1 330 486 0001  
fa-info@us.pepperl-fuchs.com

Germany: +49 621 776 1111  
fa-info@de.pepperl-fuchs.com

Singapore: +65 6779 9091  
fa-info@sg.pepperl-fuchs.com

**Technical data****General specifications**

Detection range	0 ... 400 mm
Detection range min.	0 ... 50 mm
Detection range max.	0 ... 400 mm
Reference target	standard white 200 mm x 200 mm
Light source	LED
Light type	modulated visible red light
Ambient light limit	15000 Lux

**Indicators/operating means**

Function indicator	LED yellow: switching state LED red: pre-fault indication
Control elements	sensitivity adjustment

**Electrical specifications**

Operating voltage	$U_B$	10 ... 30 V DC
Ripple		10 %
No-load supply current	$I_0$	$\leq 20$ mA
Time delay before availability	$t_v$	$\leq 20$ ms

**Output**

Switching type	light on	
Signal output	1 PNP output, short-circuit protected, reverse polarity protected, open collector	
Switching voltage	max. 30 V DC	
Switching current	max. 250 mA	
Switching frequency	$f$	$\leq 200$ Hz
Response time		$\leq 2.5$ ms

**Conformity**

Product standard	EN 60947-5-2
------------------	--------------

**Ambient conditions**

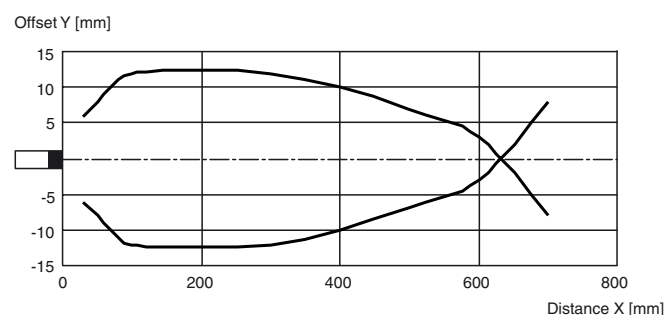
Ambient temperature	-25 ... 70 °C (-13 ... 158 °F)
Storage temperature	-40 ... 80 °C (-40 ... 176 °F)

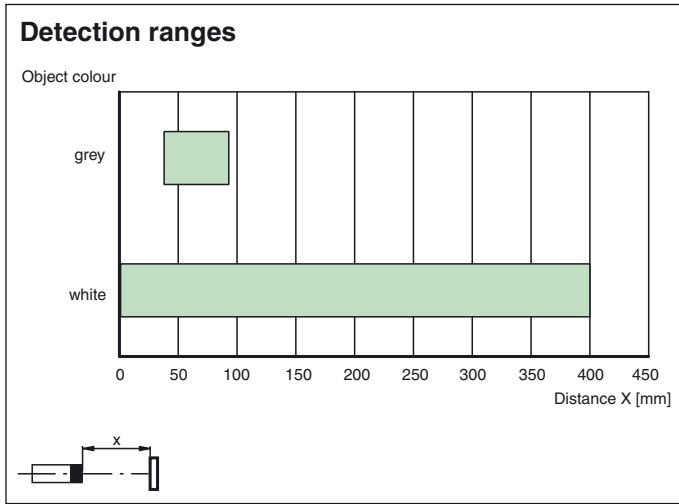
**Mechanical specifications**

Degree of protection	IP67
Connection	4-pin, M12 x 1 connector
Material	
Housing	PBT
Optical face	scratch resistant plastic lens
Mass	60 g

**Approvals and certificates**

CCC approval	CCC approval / marking not required for products rated $\leq 36$ V
Approvals	CE

**Curves/Diagrams****Characteristic response curve**



Release date: 2019-11-27 14:20 Date of issue: 2019-11-27 087371\_eng.xml

Refer to "General Notes Relating to Pepperl+Fuchs Product Information".

Pepperl+Fuchs Group  
www.pepperl-fuchs.com

USA: +1 330 486 0001  
fa-info@us.pepperl-fuchs.com

Germany: +49 621 776 1111  
fa-info@de.pepperl-fuchs.com

Singapore: +65 6779 9091  
fa-info@sg.pepperl-fuchs.com