



Model Number

V3S-M8-500

3-pin M8 receptacle

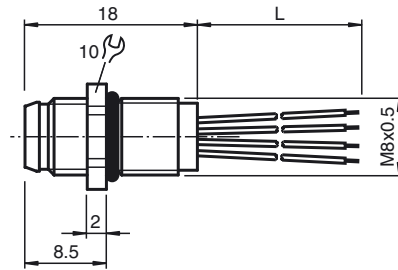
Features

- Front/screw mounting
- Halogen-free stranded wires
- Degree of protection IP67

Accessories

LOCKNUT M8 NICKEL BRASS
Nut, nickel-plated brass

Dimensions



Technical data

General specifications

Number of pins	3
Connection 1	Male connector
Construction type 1	straight
Threading 1	M8
Connection 2	cable end
UL File Number	E191152

Electrical specifications

Operating voltage	U_B	max. 48 V AC / 60 V DC
Operating current	I_B	max. 4 A
Volume resistance		< 3 m Ω

Ambient conditions

Ambient temperature	Body: -25 ... 85 °C (-13 ... 185 °F) cable, flexing: -10 ... 105 °C (14 ... 221 °F) cable, fixed: -40 ... 105 °C (-40 ... 221 °F)
Pollution degree	3

Mechanical specifications

Degree of protection	IP67
Connection	tinned copper single leads, Ø1.15 ±0.07 mm

Material

Contacts	Cu alloy
Contact surface	Au
Connector	brass, nickel-plated
Seal	FKM
Core insulation	PVC

Cable

Number of cores	3
Core cross-section	0.25 mm ²
Cores color	Core 1: brown Core 3: blue Core 4: black

Conductor construction	7 x 0.2 mm Ø
Length	L 500 mm
Installation	Front mounting M8
Flammability	
Contact carrier	HB

Compliance with standards and directives

Standard conformity	
Degree of protection	EN 60529
Flammability	IEC 60332-1-2
Halogen-free	IEC 60754-1
Specification	connector M8 x 1 : IEC 61076-2-104

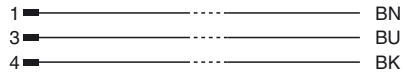
Release date: 2019-10-08 15:51 Date of issue: 2019-10-08 456943_eng.xml

Refer to "General Notes Relating to Pepperl+Fuchs Product Information".

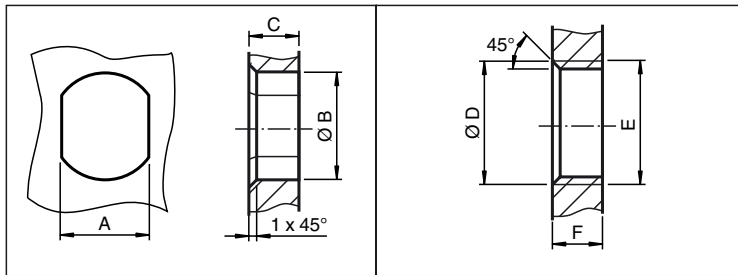
Electrical connection



Electrical connection



Installation Note



	A	B	C	D	E	F
M8	7.1 ^{+0.1}	Ø 8.2 ^{+0.1}	2 - 4 mm	-	M8x0.5	2 - 4 mm
M12	11 ^{+0.1}	Ø 12.2 ^{+0.1}	< 4 mm	-	M12x1	< 4.5 mm
M16	13.5 ^{+0.1}	Ø 16.1	< 4.5 mm	Ø 17 ^{+0.2}	M16x1.5	> 2.5 mm
M20	13.5 ^{+0.1}	Ø 20.1	-	Ø 20 ^{+0.2}	M20x1.5	< 6 mm
PG9	13.5 ^{+0.1}	Ø 15.3 ^{+0.1}	< 4.5 mm	Ø 16	PG9	> 2.5 mm
PG13.5	18.8 ^{+0.1}	Ø 20.5 ^{+0.1}	-	Ø 22 ^{±0.1}	PG13.5	-

Release date: 2019-10-08 15:51 Date of issue: 2019-10-08 456943_eng.xml

Refer to "General Notes Relating to Pepperl+Fuchs Product Information".