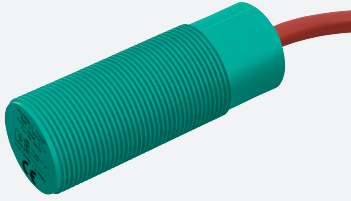


Inductive sensor

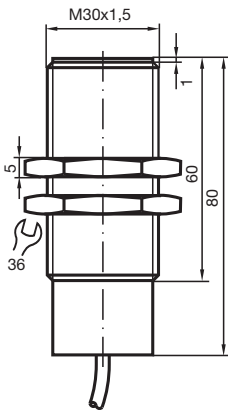
NJ10-30GK-E3-Y10560



- Basic series
- Stainless steel nuts
- With BF30



Dimensions



Technical Data

General specifications

| | | |
|----------------------------|-------|----------------------|
| Switching function | | Normally closed (NC) |
| Output type | | PNP |
| Rated operating distance | s_n | 10 mm |
| Installation | | flush |
| Output polarity | | DC |
| Assured operating distance | s_a | 0 ... 8.1 mm |
| Reduction factor r_{Al} | | 0.4 |
| Reduction factor r_{Cu} | | 0.3 |
| Reduction factor r_{304} | | 0.85 |

Nominal ratings

| | | |
|---------------------|-------|--------------|
| Operating voltage | U_B | 10 ... 30 V |
| Switching frequency | f | 0 ... 300 Hz |

Release date: 2020-03-20 Date of issue: 2020-03-30 Filename: 010560_eng.pdf

Refer to "General Notes Relating to Pepperl+Fuchs Product Information".

Pepperl+Fuchs Group
www.pepperl-fuchs.com

USA: +1 330 486 0001
fa-info@us.pepperl-fuchs.com

Germany: +49 621 776 1111
fa-info@de.pepperl-fuchs.com

Singapore: +65 6779 9091
fa-info@sg.pepperl-fuchs.com

 PEPPERL+FUCHS

Technical Data

| | | |
|----------------------------------|-------|--------------------------------|
| Hysteresis | H | 0 ... 10 typ. % |
| Reverse polarity protection | | reverse polarity protected |
| Short-circuit protection | | pulsing |
| Voltage drop | U_d | ≤ 3 V |
| Operating current | I_L | 0 ... 200 mA |
| No-load supply current | I_0 | ≤ 20 mA |
| Switching state indicator | | no |
| Standard conformity | | |
| Standards | | IEC / EN 60947-5-2:2004 |
| Ambient conditions | | |
| Ambient temperature | | -40 ... 70 °C (-40 ... 158 °F) |
| Mechanical specifications | | |
| Core cross-section | | 0.75 mm ² |
| Housing material | | PBT |
| Sensing face | | PBT |
| Degree of protection | | IP67 |

Connection

E3

