



**Model Number**

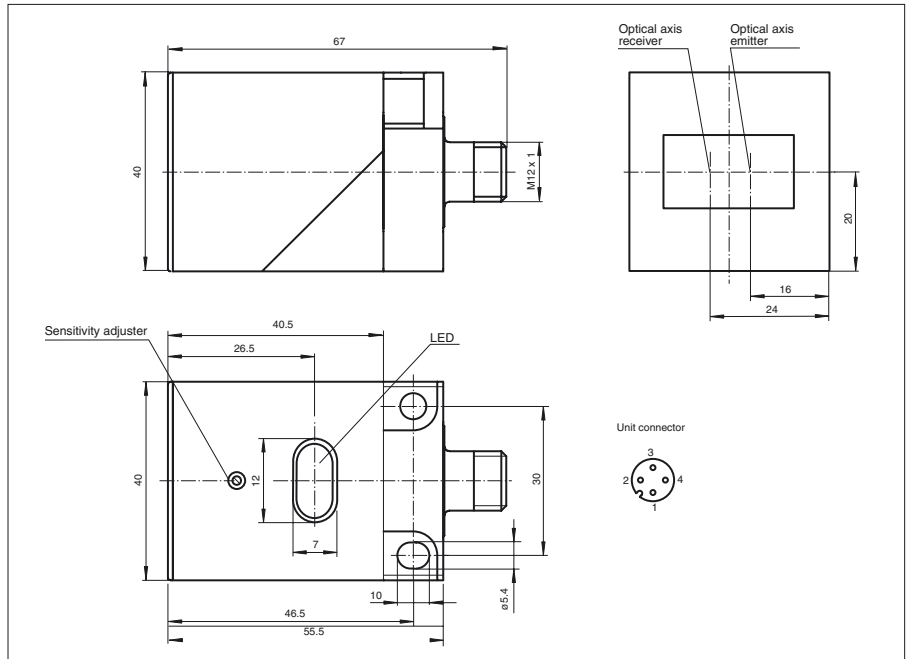
**OBS6000-L2-E2-V1**

Retroreflective sensor  
with 4-pin, M12 x 1 connector

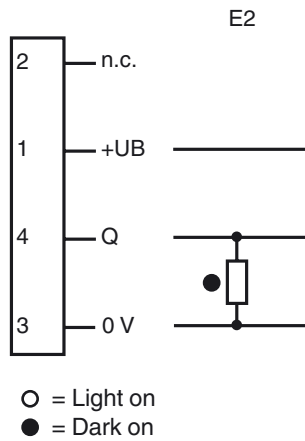
**Features**

- Glare protected with polarization filter
- Visible red light
- Positioning of the sensor head is possible in two planes
- Multitude of mounting possibilities
- Mounting only with one tool: the screwdriver

**Dimensions**



**Electrical connection**



Release date: 2019-11-27 14:20 Date of issue: 2019-11-27 087373\_eng.xml

## Technical data

### General specifications

|                           |                             |
|---------------------------|-----------------------------|
| Effective detection range | 0 ... 6000 mm               |
| Reflector distance        | 600 ... 6000 mm             |
| Threshold detection range | 9 m (with H85 reflector)    |
| Light source              | LED                         |
| Light type                | modulated visible red light |
| Polarization filter       | no                          |
| Ambient light limit       | 15000 Lux                   |

### Indicators/operating means

|                    |  |
|--------------------|--|
| Function indicator | LED yellow: switching state<br>LED red: pre-fault indication |
| Control elements   | sensitivity adjustment                                       |

### Electrical specifications

|                        |       |                |
|------------------------|-------|----------------|
| Operating voltage      | $U_B$ | 10 ... 30 V DC |
| Ripple                 |       | 10 %           |
| No-load supply current | $I_0$ | $\leq 20$ mA   |

### Output

|                     |   |               |
|---------------------|---|---------------|
| Switching type      | dark on   |               |
| Signal output       | 1 PNP output, short-circuit protected, reverse polarity protected, open collector |               |
| Switching voltage   | max. 30 V DC  |               |
| Switching current   | max. 250 mA   |               |
| Voltage drop        | $U_d$   | $\leq 1.5$ V  |
| Switching frequency | $f$   | $\leq 200$ Hz |
| Response time       |   | $\leq 2.5$ ms |

### Conformity

|                  |              |
|------------------|--------------|
| Product standard | EN 60947-5-2 |
|------------------|--------------|

### Ambient conditions

|                     |                                |
|---------------------|--------------------------------|
| Ambient temperature | -25 ... 70 °C (-13 ... 158 °F) |
| Storage temperature | -40 ... 80 °C (-40 ... 176 °F) |

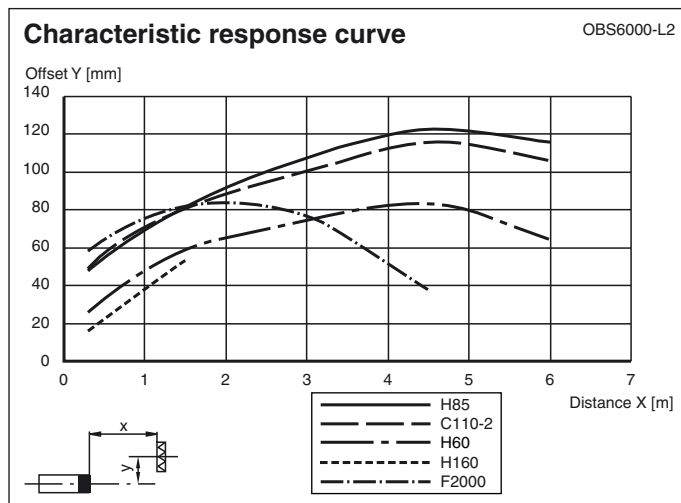
### Mechanical specifications

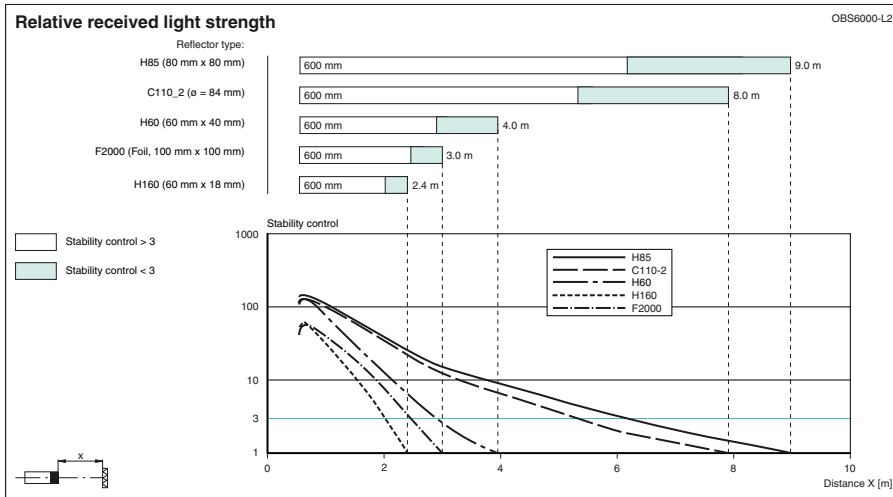
|                      |                                |
|----------------------|--------------------------------|
| Housing width        | 40 mm                          |
| Housing height       | 40 mm                          |
| Housing depth        | 55.5 mm                        |
| Degree of protection | IP67                           |
| Connection           | 4-pin, M12 x 1 connector       |
| Material             |                                |
| Housing              | PBT                            |
| Optical face         | scratch resistant plastic lens |
| Mass                 | 60 g                           |

### Approvals and certificates

|              |  |
|--------------|--|
| CCC approval | CCC approval / marking not required for products rated $\leq 36$ V |
| Approvals    | CE   |

## Curves/Diagrams





Release date: 2019-11-27 14:20 Date of issue: 2019-11-27 087373\_eng.xml

Refer to "General Notes Relating to Pepperl+Fuchs Product Information".

Pepperl+Fuchs Group  
www.pepperl-fuchs.com

USA: +1 330 486 0001  
fa-info@us.pepperl-fuchs.com

Germany: +49 621 776 1111  
fa-info@de.pepperl-fuchs.com

Singapore: +65 6779 9091  
fa-info@sg.pepperl-fuchs.com