



### Model Number

**MPZB01**

Mounting bracket with vertical slots

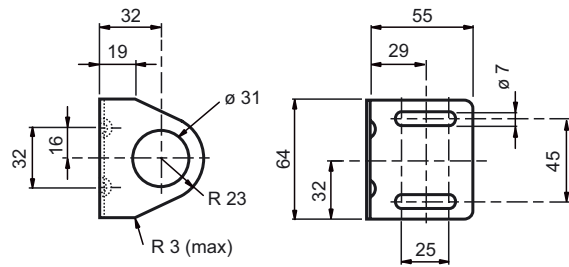
### Features

- Mounting bracket

### Function

This mounting bracket fits around the M30 threaded portion of the sensor base. The bracket allows the base to rotate 360°. An M30 mounting nut and lockwasher are included for securing the base to the bracket.

### Dimensions



### Technical data

#### General specifications

Inside diameter 30 mm

#### Mechanical specifications

Material metal

Mass approx. 115 g

#### Suitable series

Series Series 61 , MP Series