

Features

- Sensor for continuous level measurement in liquids
- Resolution 5 mm or 15 mm
- Media contacting parts of stainless steel
- Mounting without removing the float
- Approved for zone 0

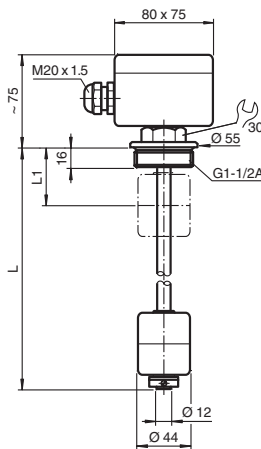
Function

The device is a sensor for continuous level measurement in liquids.

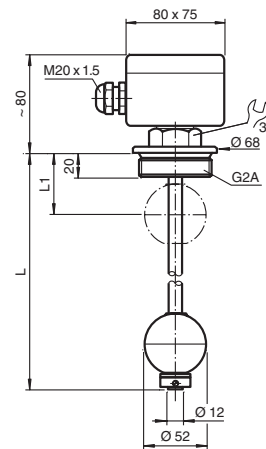
A ring magnet integrated in the float activates a reed contact resistance chain inside the probe tube via its magnetic field.

If the level changes, the resistance chain changes its total resistance by closing the contact at the float level. The resistance is converted into a standardised output signal by a control unit. This output signal is proportional to the level of the measured medium.

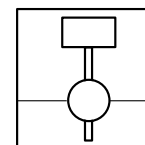
Assembly



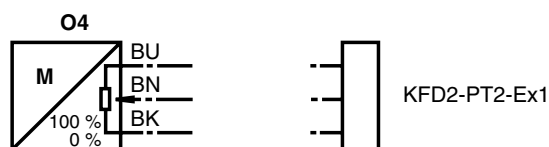
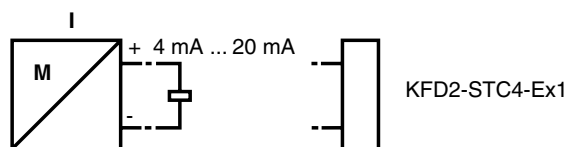
LMC**S2-G5S-**EX



LMC**S3-G6S-**EX



Connection



Release date 2020-01-23 11:52 Date of issue 2020-01-23 t29389_eng.xml

Refer to "General Notes Relating to Pepperl+Fuchs Product Information".

General specifications		
Equipment architecture	A measuring system consists of a magnet-operated immersion probe LMC****-***-I-Ex with built-in converter and a transmitter power supply KFD2-STC4-Ex1 or of a magnet-operated immersion probe LMC****-***-O4-Ex and a potentiometer converter KFD2-PT2-Ex1.	
Output		
Connection	version I: 2-wire, 4 ... 20 mA version O4: 3-wire, potentiometer connection approx. 40 kΩ	
Directive conformity		
Electromagnetic compatibility Directive 2014/30/EU	EN 61000-6-2:2006 , EN 61000-6-4:2011	
Conformity		
Degree of protection	IEC 60529:2000	
Measurement accuracy		
Accuracy	resolution: - version LMC5: 5 mm - version LMC15: 15 mm	
Operating conditions		
Process conditions		
Process temperature	-20 ... 100 °C (-4 ... 212 °F)	
Process pressure (static pressure)	≤ 16 bar (232.1 psi)	
Density	version S1: ≥ 0.6 g/cm ³ version S2: ≥ 0.8 g/cm ³ version S3: ≥ 0.7 g/cm ³	
Ambient conditions		
Ambient temperature	terminal box: -50 ... 60 °C (-58 ... 140 °F)	
Mechanical specifications		
Degree of protection	IP65	
Connection	Version I: 2 terminals, max. 2.5 mm ² Version O4: 3 terminals, max. 2.5 mm ²	
Material	float, guide tube, process connection: stainless steel 1.4571/316Ti terminal box: aluminum die-casting	
Dimensions	float: - version S1: ball Ø80 mm - version S2: cylinder Ø44 mm x 52 mm - version S3: ball Ø52 mm guide tube: - version LMC5: Ø14 mm, max. length 3000 mm - version LMC15: Ø12 mm, max. length 3000 mm terminal box: 80 x 75 x 57 mm	
Process connection	thread G1-1/2A, G2A to DIN/ISO 228/1	
Data for application in connection with hazardous areas		
EU-type examination certificate	KEMA 03 ATEX 1497 X	
Marking	⊕ II 1/2G EEx ia IIC T4...T6	
Voltage	U _i	28 V
Current	I _i	120 mA
Internal capacitance	C _i	0 nF
Internal inductance	L _i	0 μH
Directive conformity		
Directive 2014/34/EU	EN 60079-0:2012, EN 60079-11:2012, EN 60079-26:2007	
General information		
Supplementary documentation	instruction manuals (SI)	
Supplementary information	EC-Type Examination Certificate, Statement of Conformity, Declaration of Conformity, Attestation of Conformity and instructions have to be observed where applicable. For information see www.pepperl-fuchs.com.	
Accessories		
Optional accessories	LML-FS1 float, ball, Ø80 mm, 1.4571/316Ti LML-FS4 float, ball, Ø44 mm, 1.4571/316Ti LML-FS5 float, ball, Ø52 mm, Titanium LML-FS6 float, cylinder, Ø44 mm x 52 mm, 1.4571/316Ti	

Release date 2020-01-23 11:52 Date of issue 2020-01-23 12:39:39_eng.xml

Refer to "General Notes Relating to Pepperl+Fuchs Product Information".

Type Code



*This overview does not mark options which are mutually exclusive.
Option with * = on request/in preparation*

Device	
LMC	Magnetic immersion probe for continuous measurement
Resolution	
5	5 mm
15	15 mm
Guide tube material	
S	1.4571/316Ti
Float	
1	Ball, Ø80 mm, 1.4571/316Ti
2	Cylinder, Ø44 mm x 52 mm, 1.4571/316Ti
3	Ball, Ø52 mm, 1.4571/316Ti
Process connection	
G5	Thread G1-1/2A, DIN/ISO 228/1
G6	Thread G2A, DIN/ISO 228/1
Process connection material	
S	1.4571/316Ti
Electrical output	
I	2-wire, 4 mA ... 20 mA
O4	3-wire, potentiometer connection approx. 40 kΩ
Approval	
EX	ATEX II 1/2G EEx ia IIC T4...T6
Guide tube length	
L	Specified length, max. 3000 mm

Release date 2020-01-23 11:52 Date of issue 2020-01-23 t29389_eng.xml

Refer to "General Notes Relating to Pepperl+Fuchs Product Information".