

SITOR FUSE-LINK 1250A, AC 600V



Similar to image

Technical data:

product brand name		SETRON
Current / for AC / rated value	A	1,250
Operating class of the fuse link		aR
Size of the fallback-system / acc. to DIN EN 60269-1		others
Supply voltage		
• for AC / rated value	V	600
• for DC	V	440
Switching capacity current		
• in accordance with IEC 60947-2 / rated value	kA	100
Design of the fuse link		Fuses for special applications
Design of an identification indicator		others
mounting position		Any, preferably vertical
Climatic class		-20 to +50 at 95% relative humidity
Ambient temperature	°C	-20 ... +50
Varying load factor (WL)		0.9
Resistive loss	W	210
Active power loss / at rated value current / with AC / in warm operating state / per pole	W	210

Reference code / according to DIN EN 61346-2

F

Item designation / according to DIN EN 81346-2

F

Certificates/approvals:

General Product
Approval

Declaration of Conformity



GOST



EG-Konf.

Further information:

Information- and Downloadcenter (Catalogs, Brochures,...)

<http://www.siemens.com/lowvoltage/catalogs>

Industry Mall (Online ordering system)

<https://eb.automation.siemens.com/mall/en/WW/Catalog/Product/3NE9450-7>

Service&Support (Manuals, Certificates, Characteristics, FAQs,...)

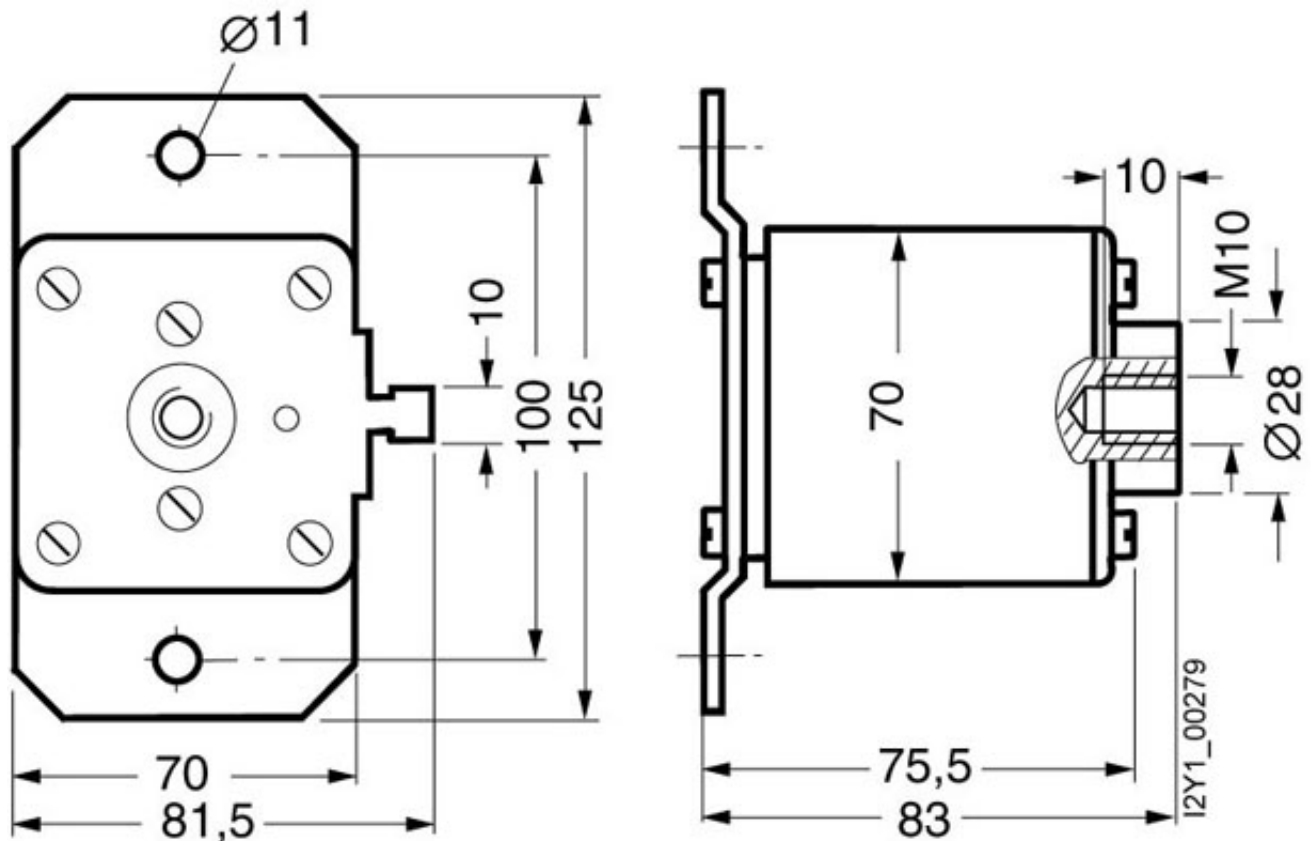
<http://support.automation.siemens.com/WW/view/en/3NE9450-7/all>

Image database (product images, 2D dimension drawings, 3D models, device circuit diagrams, ...)

http://www.automation.siemens.com/bilddb/cax_en.aspx?mlfb=3NE9450-7

CAX-Online-Generator

<http://www.siemens.com/cax>



last change:

Jul 14, 2014