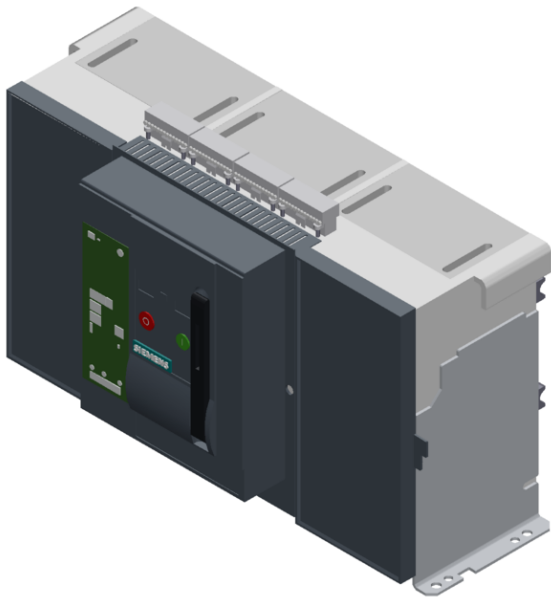


fixed-mounted circuit breaker 3-pole, size III, IEC In=5000A to 690V,
AC50/60Hz Icu=100kA at 500V rear connection horizontal
Overcurrent release ETU 25 LSI protection adjustable 0.4-1 in With
manual operating mechanism with storage with mechanical request
without 1st auxiliary release without 2nd auxiliary release 2NO+2NC



Model	
Product brand name	SENTRON
Product designation	ACB
Design of the product	IEC 60947-2
Design of the operating mechanism	Pushbutton
Type of the driving mechanism	Manual operating mechanism with mechanical closing
Type of the driving mechanism / motor drive	No

Design of the overcurrent release	ETU25B
-----------------------------------	--------

General technical data

Number of poles	3
Size of the circuit-breaker	3
Usage category	B
circuit-breaker / Design	3WL1

Voltage

Rated insulation voltage U_i	1 000 V
Operating voltage <ul style="list-style-type: none"> at AC / at 50/60 Hz / rated value 	690 V

Protection class

Protection class IP	IP20
Protection class IP / on the front	IP20
protection function of the overcurrent release	LSI

Dissipation

Power loss [W] / for rated value of the current / at AC / in hot operating state / per pole	210 W
---	-------

Current

Operating current / at 45 °C / rated value	5 000 A
Continuous current / rated value	5 000 A
adjustable pick-up value current <ul style="list-style-type: none"> of instantaneous short-circuit trip unit / initial value of instantaneous short-circuit trip unit / Full-scale value 	50 000 A

Main circuit

Operating frequency <ul style="list-style-type: none"> 1 / rated value 2 / rated value 	50 Hz 60 Hz
Operating current <ul style="list-style-type: none"> at 40 °C / rated value at 50 °C / rated value at 55 °C / rated value at 60 °C / rated value at 65 °C / rated value at 70 °C / rated value 	5 000 A 5 000 A 5 000 A 5 000 A 5 000 A 5 000 A

Auxiliary circuit

Number of NC contacts / for auxiliary contacts	2
Number of NO contacts / for auxiliary contacts	2





Suitability





Suitability for use	Plant / motor protection
Product details	
Product component	
• Trip indicator	Yes
• Voltage trigger	No
• undervoltage release	No
Product extension / optional / motor drive	Yes
Product function	
Product function	
• Ground fault protection	No
• Phase failure detection	Yes
Display and operation	
Display version	without display
Short circuit	
Operational short-circuit current breaking capacity (Ics)	
• at 415 V / rated value	100 kA
• at 500 V / rated value	100 kA
• at 690 V / rated value	85 kA
Maximum short-circuit current breaking capacity (Icu)	
• at 415 V / rated value	100 kA
• at 500 V / rated value	100 kA
• at 690 V / rated value	85 kA
Connections	
Arrangement of electrical connectors / for main current circuit	Main connection rear side horizontal
Type of electrical connection / for main current circuit	busbar connection
Mechanical Design	
Height	439 mm
Width	704 mm
Depth	337 mm
Mounting type	fixed mounting
Environmental conditions	
Ambient temperature / during operation	
• minimum	-20 °C
• maximum	70 °C
Ambient temperature / during storage	
• minimum	-40 °C
• maximum	70 °C

Certificates

Reference code

- acc. to DIN EN 61346-2 Q
- acc. to DIN EN 81346-2 Q

General Product Approval	Declaration of Conformity	Test Certificates	Shipping Approval
 CCC	 VDE	 EG-Konf.	Special Test Certificate Miscellaneous  ABS

Shipping Approval	other
 BUREAU VERITAS	 LRS
 PRS	 RMRS
CCS / China Classification Society	Environmental Confirmations

other
Manufacturer Declaration
Confirmation
Miscellaneous

Further information

Industry Mall (Online ordering system)

<https://mall.industry.siemens.com/mall/en/en/Catalog/product?mlfb=3WL1350-4CB32-1AA2>

Service&Support (Manuals, Certificates, Characteristics, FAQs,...)

<https://support.industry.siemens.com/cs/ww/en/ps/3WL1350-4CB32-1AA2>

Image database (product images, 2D dimension drawings, 3D models, device circuit diagrams, ...)

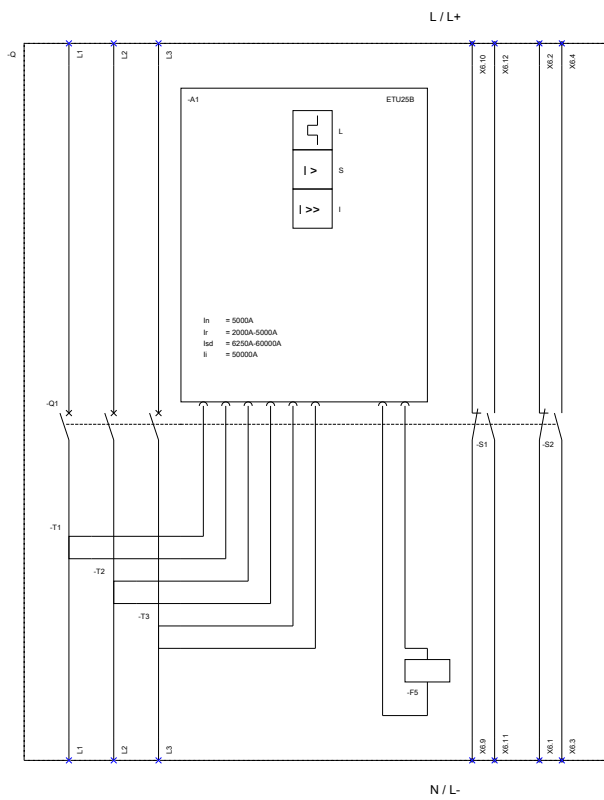
http://www.automation.siemens.com/bilddb/cax_en.aspx?mlfb=3WL1350-4CB32-1AA2

CAX-Online-Generator

<http://www.siemens.com/cax>

Tender specifications

<http://www.siemens.com/specifications>



L (Long Time Delay / Überlastschutz); S (Short Time Delay / Kurzschlusschutz, kurzzeitverzögert);
 I (Instantaneous / Kurzschlusschutz, unverzögert); F5 (Maglatch for trip unit / Auslösemagnet);
 S1 - S8 (Auxiliary switch / Hilfsschalter);

last modified:

08/12/2020