



LOAD FEEDER FUSELESS REVERSING DUTY,  
AC 400 V, SIZES0, 2.2...3.2 A,  
DC 24 V SCREW CONNECTION,  
TYPE OF COORDIN. 2,  
IQ = 50 KA ON 40 MM BUSBAR ADAPTER

Certificates/ approvals:

General Product Approval

For use in hazardous locations

Declaration of Conformity



Shipping Approval



other

[other](#)

[Environmental Confirmations](#)

Further information:

Information- and Downloadcenter (Catalogs, Brochures,...)

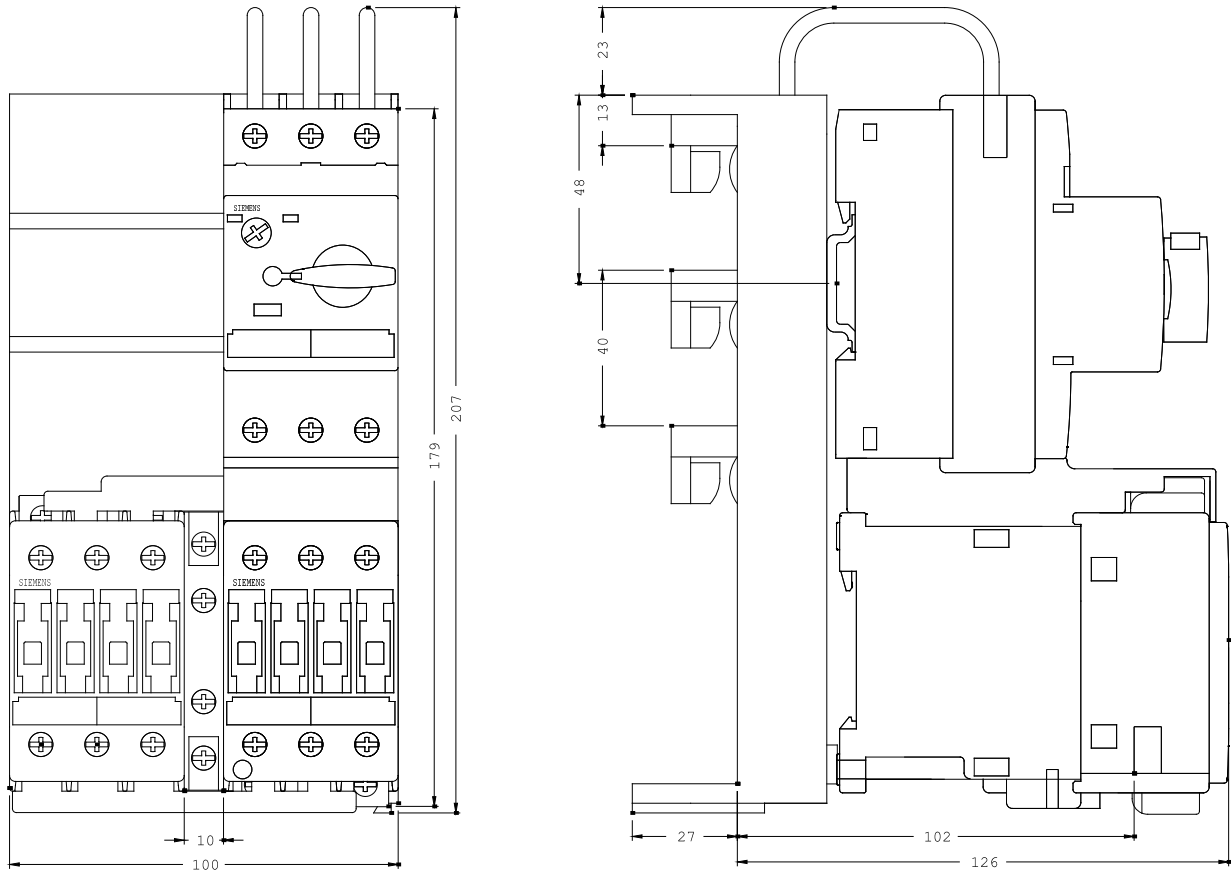
<http://www.siemens.com/industrial-controls/catalogs>

Industry Mall (Online ordering system)

<http://www.siemens.com/industrial-controls/mall>

Cax online generator

<http://www.siemens.com/cax>



last change: