



LOAD FEEDER FUSELESS REVERSING DUTY,
AC 400 V, SIZES 0, 5.5...8 A, DC 24 V,
SCREW CONNECTION, TYPE OF COORDIN. 2,
IQ = 50 KA ON 60 MM BUSBAR ADAPTER

Certificates/ approvals:

General Product Approval

For use in hazardous locations

Declaration of Conformity



Shipping Approval



other

[other](#)

[Environmental Confirmations](#)

Further information:

Information- and Downloadcenter (Catalogs, Brochures,...)

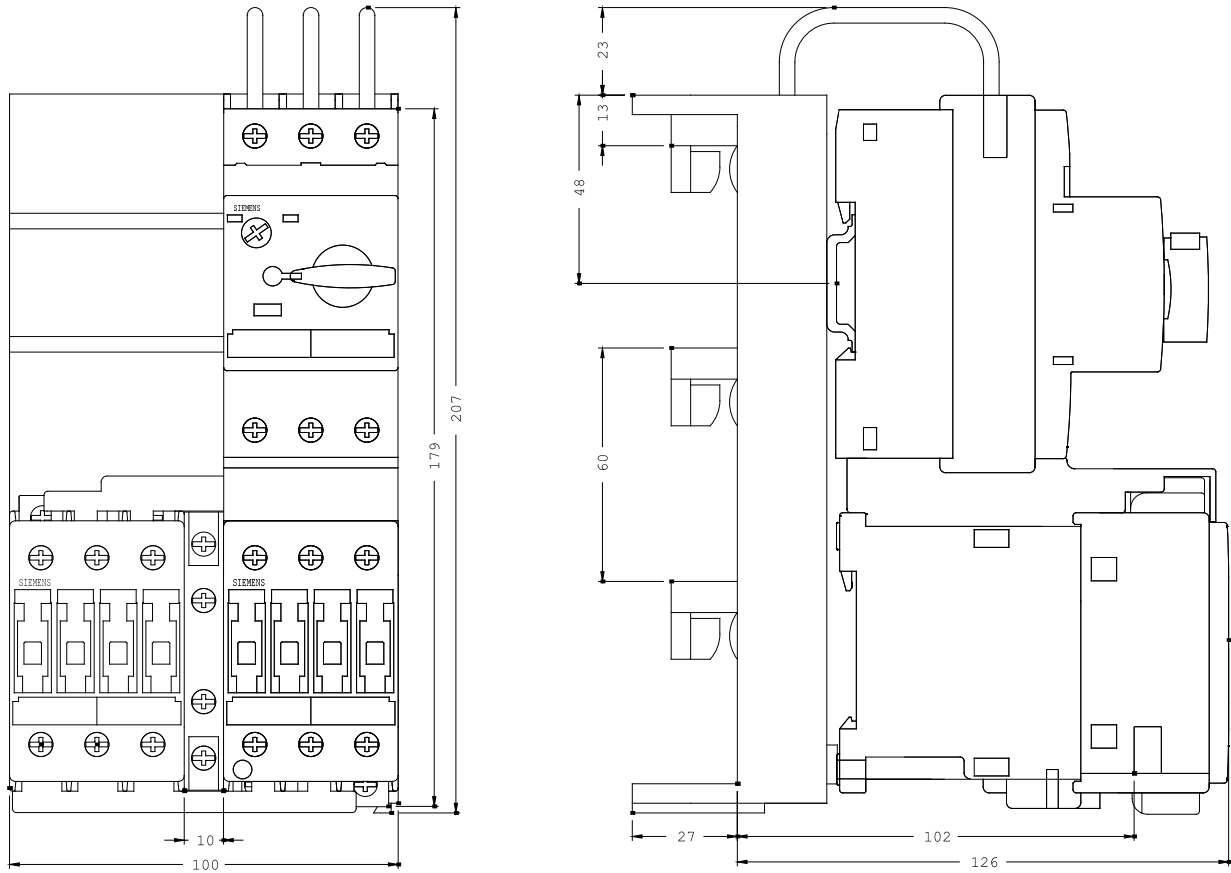
<http://www.siemens.com/industrial-controls/catalogs>

Industry Mall (Online ordering system)

<http://www.siemens.com/industrial-controls/mall>

Cax online generator

<http://www.siemens.com/cax>



last change: