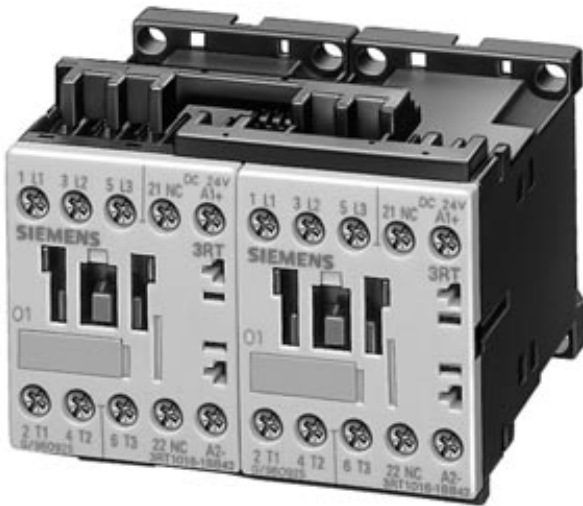


REVERSING CONTACTOR COMBINATION AC-3 4KW/400 V,
3-POLE, SIZE S00, SCREW CONNECTION,
DC 110 V, EL. AND MECH. LOCKING DEVICE



| General technical data: | | |
|--|----|---------------------|
| Product function | | reversing contactor |
| Size of the contactor | | S00 |
| Width | mm | 90 |
| Height | mm | 67 |
| Depth | mm | 72 |
| Reference code | | |
| <ul style="list-style-type: none"> • according to DIN EN 61346-2 • according to DIN 40719 extended according to IEC 204-2 / according to IEC 750 | | Q K |
| Control circuit/ Control: | | |
| Voltage type / of control feed voltage | | DC |
| Control supply voltage / 1 | | |
| <ul style="list-style-type: none"> • for DC • rated value | V | 110 |
| Main circuit: | | |
| Operating current / at AC-3 / at 400 V | | |
| <ul style="list-style-type: none"> • rated value | A | 9 |
| Service power / at AC-3 / at 400 V | | |

• rated value

kW 4

Auxiliary circuit:

Number of NC contacts / for auxiliary contacts / per direction of rotation

0

Number of NO contacts / for auxiliary contacts / per direction of rotation

0

Connections/ terminals:

Design of the electrical connection / for main current circuit

screw-type terminals

Mounting type

screw and snap-on mounting onto 35 mm standard mounting rail according to DIN EN 50022

Ambient conditions:

Ambient temperature

• during operating

°C

-25 ... +60

Protection class IP / on the front

IP20

Certificates/ approvals:

General Product Approval

Declaration of
Conformity

Test Certificates



[Special Test Certificate](#)

Shipping Approval



Shipping Approval

other



[other](#)

[Environmental Confirmations](#)

Further information:

Information- and Downloadcenter (Catalogs, Brochures,...)

<http://www.siemens.com/industrial-controls/catalogs>

Industry Mall (Online ordering system)

<http://www.siemens.com/industrial-controls/mall>

Cax online generator

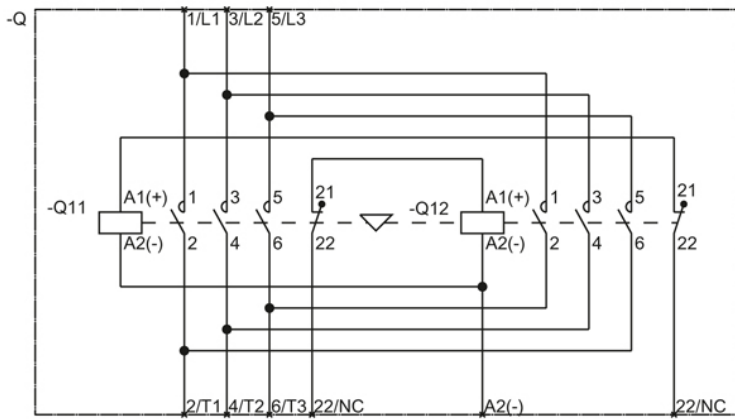
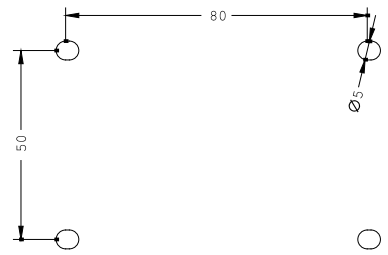
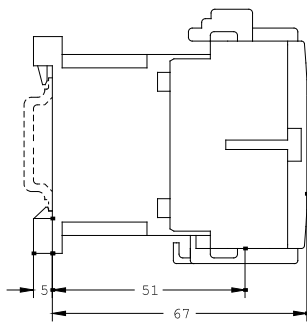
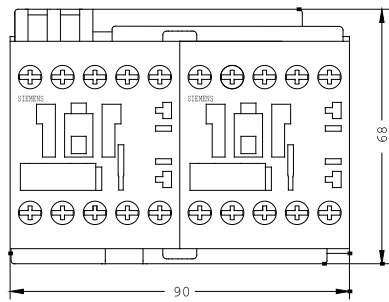
<http://www.siemens.com/cax>

Service&Support (Manuals, Certificates, Characteristics, FAQs,...)

<http://support.automation.siemens.com/WW/view/en/3RA1316-8XB30-1BF4/all>

Image database (product images, 2D dimension drawings, 3D models, device circuit diagrams, ...)

http://www.automation.siemens.com/bilddb/cax_en.aspx?mlfb=3RA1316-8XB30-1BF4



last change:

Jul 28, 2014