

LOAD FEEDER FUSELESS REVERSING DUTY,  
AC 400V, SZ. S0, 27...32A,  
DC 24V SCREW CONNECTION FOR RAIL MOUNTING,  
W. MOUNTING RAIL ADAPTER TYPE OF COORD. 2,IQ =  
150KA (ALSO ACHIEVES TYPE OF COORD.1) 1NO+1NC  
(CONTACTOR)

## Allgemeine technische Daten:

|  |    |                             |
|--|----|-----------------------------|
| <b>product brand name</b>  |    | SIRIUS                      |
| <b>Product designation</b>   |    | non-fused load feeders 3RA2 |
| <b>Size of the load feeder</b>                                       |    | S0                          |
| <b>Number of poles / for main current circuit</b>                    |    | 3                           |
| <b>Installation altitude / at a height over sea level / maximum</b>  | m  | 2,000                       |
| <b>Product function</b>  |    |                             |
| • short circuit protection   |    | Yes                         |
| • overload protection  |    | Yes                         |
| • phase disturbance recognition                                      |    | Yes                         |
| <b>Product component</b>   |    |                             |
| • trip indicator   |    | No                          |
| • auxiliary switch   |    | No                          |
| <b>Product extension / auxiliary switch</b>                          |    | Yes                         |
| <b>Design of display / for switching status</b>                      |    | Switch setting              |
| <b>Insulation voltage / with degree of pollution 3 / rated value</b> | V  | 690                         |
| <b>Impulse voltage resistance / rated value</b>                      | kV | 6                           |
| <b>Protection class IP</b>   |    |                             |
| • on the front   |    | IP20                        |
| <b>Protection against electrical shock</b>                           |    | finger-safe                 |

|   |    |  |
|---|----|--|
| <b>Shock resistance / according to IEC 60068-2-27</b>   |    | 6g / 11 ms   |
| <b>maximum permissible voltage for safe isolation in networks with non-grounded star point</b>  |    |  |
| <b>Ambient temperature</b>  |    |  |
| <ul style="list-style-type: none"> <li>during transport</li> <li>during storage</li> <li>during operating</li> </ul>  | °C | -50 ... +80<br>-50 ... 80<br>-20 ... 60  |
| <b>Manufacturer article number</b>  |    |  |
| <ul style="list-style-type: none"> <li>of the standard mounting rail adapter included in the scope of supply</li> <li>of the circuit-breakers included in the scope of supply</li> <li>of the contactor included in the scope of supply</li> <li>of the RS applied assembly kit</li> <li>of the link module included in the scope of supply</li> <li>of the busbar adapter included in the scope of supply</li> <li>of the RH applied assembly kit</li> </ul> |    | <a href="#">3RA2922-1AA00</a><br><br><a href="#">3RV2021-4EA10</a><br><a href="#">3RT2027-1BB40</a><br><br><a href="#">3RA2921-1AA00</a><br><br><a href="#">3RA2923-1BB1</a> |

#### Hauptstromkreis:

|  |   |                            |
|--|---|----------------------------|
| <b>Operating current / rated value</b>   | A | 32                         |
| <b>Mechanical operating cycles as operating time / of the auxiliary contacts / typical</b>   |   | 10,000,000                 |
| <b>Derating factor for rated value of the operational current</b>  |   |                            |
| <b>Operating voltage / rated value</b>   | V | 690                        |
| <b>Voltage type / for main circuit</b>   |   | AC                         |
| <b>Frequency</b>   |   | -                          |
| <b>Service power / at AC-3</b>   |   |                            |
| <ul style="list-style-type: none"> <li>at 400 V / rated value</li> <li>at 500 V rated value</li> <li>at 690 V rated value</li> </ul> | W | 15,000<br>18,500<br>30,000 |
| <b>Operating current / at AC-3 / at 400 V / rated value</b>  | A | 29                         |
| <b>Type of assignment</b>  |   | 2                          |

#### Steuerstromkreis/ Ansteuerung:

|   |   |     |
|---|---|-----|
| <b>Voltage type / for auxiliary and control circuit</b> |   | DC  |
| <b>Holding power / of the solenoid / for DC</b>         | W | 5.9 |

#### Hilfsstromkreis:

|   |  |   |
|---|--|---|
| <b>Number of NC contacts / for auxiliary contacts</b>         |  | 1 |
| <b>Number of NO contacts / for auxiliary contacts</b>         |  | 1 |
| <b>Number of changeover contacts / for auxiliary contacts</b> |  | 0 |

#### Schutz-/Überwachungsfunktion:

|  |   |                      |
|--|---|----------------------|
| <b>Design of the overload circuit breaker</b>                                  |   | thermal (bimetallic) |
| <b>Trip class</b>  |   | CLASS 10             |
| <b>Adjustable response current / of the current-dependent overload release</b> | A | 27 ... 32            |
| <b>Design of the short-circuit trip</b>  |   | magnetic             |
| <b>Conditional short-circuit current (I<sub>q</sub>)</b>                       |   |                      |
| • at 400 V / according to IEC 60947-4-1 / rated value                          | A | 153,000              |
| • at 500 V / according to IEC 60947-4-1 / rated value                          | A | 5,000                |
| • at 690 V according to IEC 60947-4-1 rated value                              |   | 2,000                |
| <b>Varification of suitability / ATEX</b>                                      |   | Yes                  |

#### Sicherheitsrelevante Kenngrößen:

|  |   |           |
|--|---|-----------|
| <b>Proportion of dangerous failures</b>                          |   |           |
| • with high demand rate / according to SN 31920                  | % | 73        |
| <b>B10 value / with high demand rate / according to SN 31920</b> |   | 1,000,000 |

#### Einbau/ Befestigung/ Abmessungen:

|  |    |   |
|--|----|---|
| <b>Mounting type</b>                                     |    | On adapter for screw and snap-on mounting on 35 mm standard mounting rail |
| <b>mounting position</b>                                 |    | vertical  |
| <b>Depth</b>   | mm | 129.9   |
| <b>Height</b>  | mm | 265   |
| <b>Width</b>   | mm | 90  |
| <b>Distance, to be maintained, to the ranks assembly</b> |    |   |
| • upwards  | mm | 30  |
| • forwards   | mm | 10  |
| • sideways   |    | 0   |
| • backwards  |    | 0   |
| • downwards  |    | 30  |

#### Anschlüsse/ Klemmen:

|  |  |   |
|--|--|---|
| <b>Arrangement of electrical connectors / for main current circuit</b>     |  | from the top  |
| <b>Design of the electrical connection</b>                                 |  |   |
| • for main current circuit   |  | screw-type terminals  |
| • for auxiliary and control current circuit                                |  | screw-type terminals  |
| <b>Type of the connectable conductor cross-section for main contacts</b>   |  |   |
| • solid or multi-stranded  |  | 2x (1 ... 2,5 mm <sup>2</sup> ), 2x (2,5 ... 10 mm <sup>2</sup> )                       |
| • finely stranded  |  |   |
| • with conductor end processing  |  | 2x (1 ... 2.5 mm <sup>2</sup> ), 2x (2.5 ... 6 mm <sup>2</sup> ), 1x 10 mm <sup>2</sup> |
| <b>Type of connectable conductor cross-sections for auxiliary contacts</b> |  |   |

|   |     |   |
|---|-----|---|
| <ul style="list-style-type: none"> <li>• solid or multi-stranded</li> <li>• finely stranded</li> <li>• with conductor end processing</li> </ul>                                     |     | 2x (0,5 ... 1,5 mm <sup>2</sup> ), 2x (0,75 ... 2,5 mm <sup>2</sup> ) |
| <b>Type of the connectable conductor cross-section / for AWG conductors</b> <ul style="list-style-type: none"> <li>• for main contacts</li> <li>• for auxiliary contacts</li> </ul> |     | 2x (16 ... 12), 2x (14 ... 8)<br>2x (20 ... 16), 2x (18 ... 14)       |
| <b>Tightening torque / for main contacts</b> <ul style="list-style-type: none"> <li>• with screw-type terminals</li> </ul>  | N·m | 2 ... 2.5   |
| <b>Design of the thread of the connection screw for main contacts</b>   |     |   |
| M4  | M4  |   |
| <b>Tightening torque / for auxiliary contacts</b> <ul style="list-style-type: none"> <li>• with screw-type terminals</li> </ul>   | N·m | 0.8 ... 1.2   |
| <b>Design of the thread of the connection screw of the auxiliary and control pins</b>   |     |   |
| M3  | M3  |   |
| <b>Dimension de la tête de tournevis</b>  |     | Pozidriv 2  |

#### UL/CSA Bemessungsdaten:

##### yielded mechanical performance [hp] / for three-phase squirrel cage motors

- at 220/230 V / rated value
- at 460/480 V rated value
- at 575/600 V rated value

|    |    |
|----|----|
| hp | 10 |
|    | 20 |
|    | 25 |

##### Full-load current (FLA) / for 3-phase motor

- at 480 V / rated value

|   |    |
|---|----|
| A | 14 |
|---|----|

#### Approbationen/ Zertifikate:

##### General Product Approval



[Type Test Certificates/Test Report](#)

##### For use in hazardous locations

##### Declaration of Conformity

##### Test Certificates

##### Shipping Approval



##### other

[Declaration of Conformity](#)

[other](#)

[Environmental Confirmations](#)

#### Weitere Informationen:

**Information- and Downloadcenter (Kataloge, Broschüren,...)**

<http://www.siemens.de/industrial-controls/catalogs>

**Industry Mall (Online-Bestellsystem)**

<http://www.siemens.de/industrial-controls/mall>

**CAX-Online-Generator**

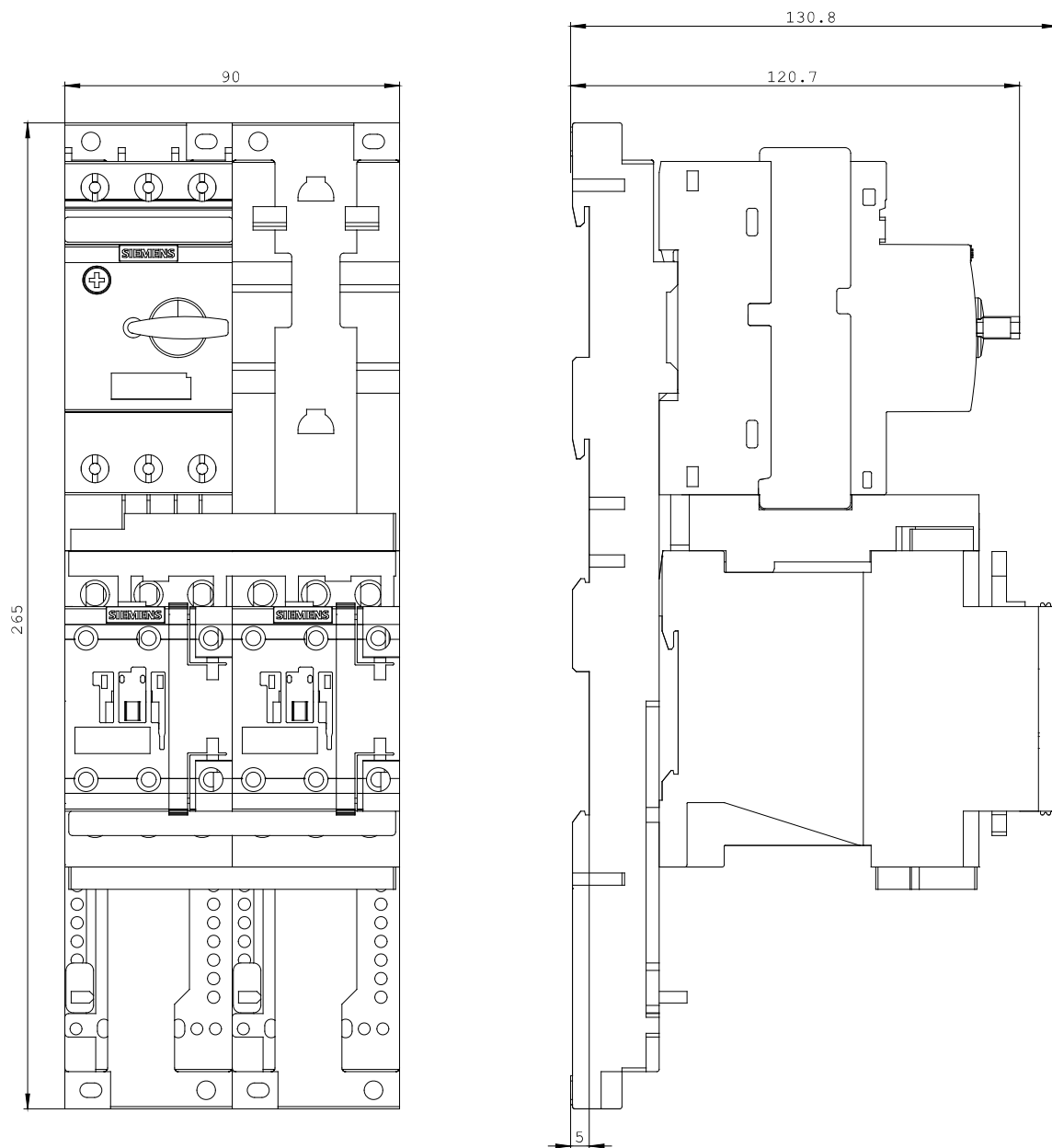
<http://www.siemens.com/cax>

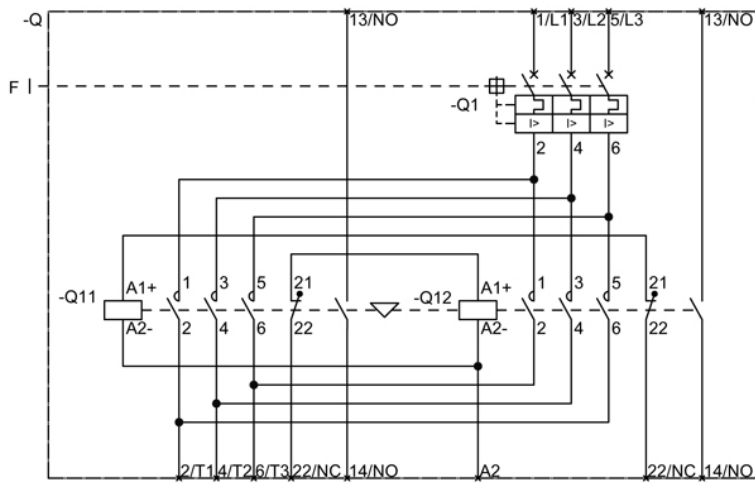
**Service&Support (Handbücher, Betriebsanleitungen, Zertifikate, Kennlinien, FAQs,...)**

<http://support.automation.siemens.com/WW/view/de/3RA2220-4EB27-0BB4/all>

**Bilddatenbank (Produktfotos, 2D-Maßzeichnungen, 3D-Modelle, Geräteschaltpläne, ...)**

[http://www.automation.siemens.com/bilddb/cax\\_de.aspx?mlfb=3RA2220-4EB27-0BB4](http://www.automation.siemens.com/bilddb/cax_de.aspx?mlfb=3RA2220-4EB27-0BB4)





letzte Änderung:

Jul 28, 2014