

AUXILIARY SWITCH, 2 NO CONTACTS,
CONNECTION AUXILIARY CIRCUIT: SCREW TERMINAL,



General technical data:		
product brand name		SIRIUS
Product designation		auxiliary switch compact feeder
Protection class IP		IP20
Relative humidity		
• during operating phase	%	10 ... 90
Ambient temperature		
• during transport	°C	-55 ... +80
• during storage	°C	-55 ... +80
• during operating	°C	-20 ... +60
Reference code		
• according to DIN EN 61346-2		K
• according to DIN 40719 extended according to IEC 204-2 / according to IEC 750		K

Auxiliary circuit:		
Number of NC contacts		
• for auxiliary contacts		0
Number of NO contacts		
• for auxiliary contacts		2

Installation/ mounting/ dimensions:

Width	mm	45
Height	mm	32
Depth	mm	25

Connections/ terminals:

Wire stripping length	mm	10
Design of the electrical connection • for auxiliary and control current circuit		screw-type terminals
Design of screw-type connection • for auxiliary contacts		M6
Tightening torque / for auxiliary contacts • with screw-type terminals	N-m	0.8 ... 1.2
Type of the connectable conductor cross-section / for auxiliary contacts • solid • finely stranded • with conductor end processing		max. 2x (1 ... 4 mm ²) 2x (0.5 ... 1.5 mm ²), 2x (0.75 ... 2.5 mm ²)
Type of the connectable conductor cross-section / for AWG conductors • for auxiliary contacts		2x (20 ... 16), 2x (18 ... 14), 1x 12

Certificates/ approvals:

Verification of suitability	IEC / EN 60947-6-2	
------------------------------------	--------------------	--

General Product Approval**EMC****Functional Safety / Safety of Machinery****Shipping Approval****other**

[Declaration of Conformity](#)

[other](#)

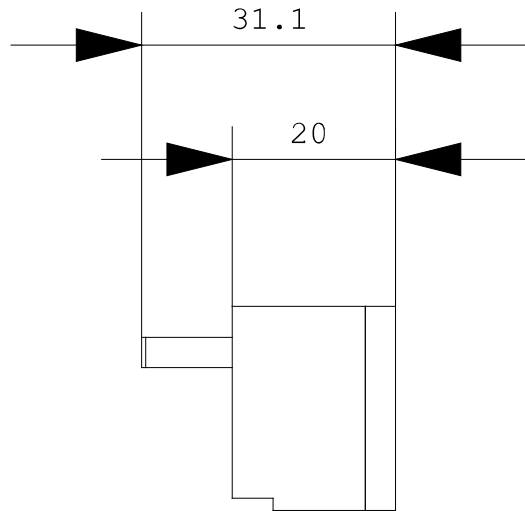
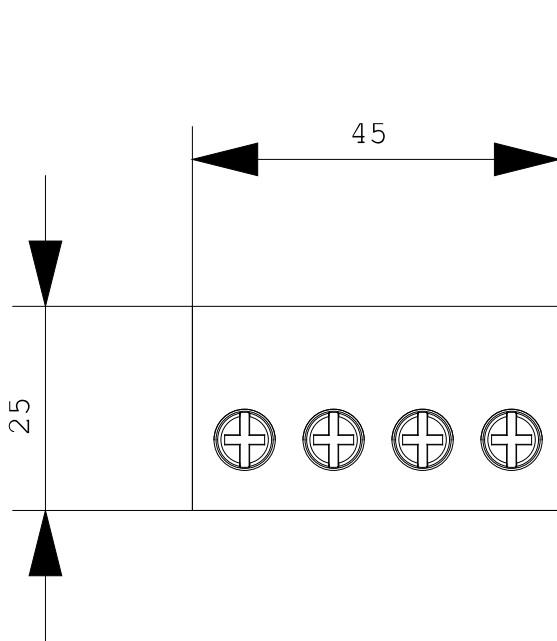
[Environmental Confirmations](#)

Further information:**Information- and Downloadcenter (Catalogs, Brochures,...)**

<http://www.siemens.com/industrial-controls/catalogs>

Industry Mall (Online ordering system)

<http://www.siemens.com/industrial-controls/mall>



last change:

Jul 7, 2014