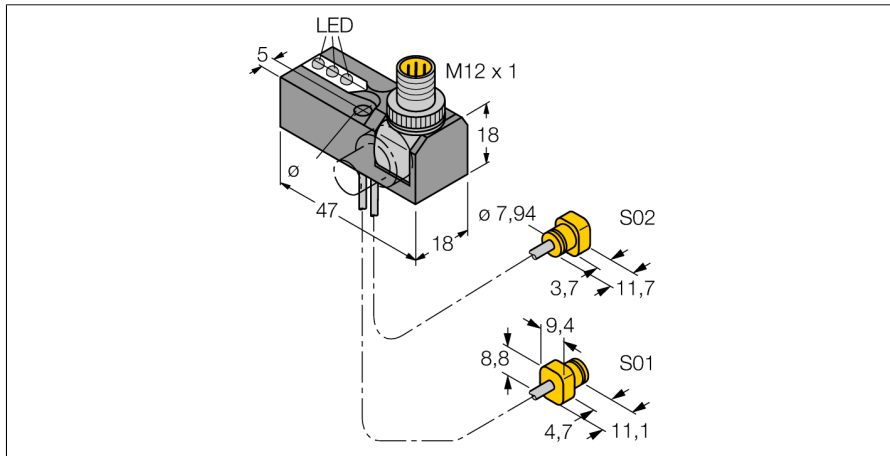
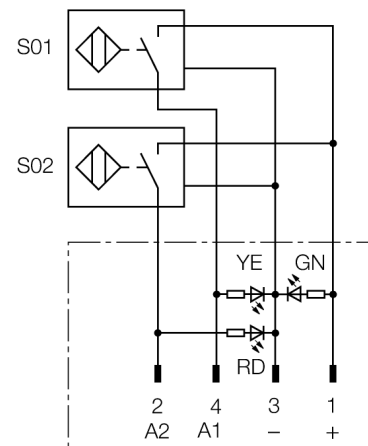


**Inductive sensor
power clamp monitor
NI2-K08Q-0,095/0,11-BDS-2AP6X3-H1141/S34**



- BDS power block with two connected sensors and LEDs
- Robust rotatable connector 0°, 45° and 90°, for optimal cable routing
- Plastic, Trogamid
- Magnetic field immune (weld-resistant) to DC and AC fields
- 2 x NO contact, PNP output
- 4-wire DC, 10...30 VDC

Wiring diagram



Functional principle

TURCK offers special monitoring kits, consisting of two miniature sensors, as a convenient solution for "Open/Closed" detection on pneumatic power clamps. This product line provides almost unlimited combination possibilities, comprising four different power blocks and over forty different modular sensor types.

Type code	NI2-K08Q-0,095/0,11-BDS-2AP6X3-H1141/S34
Ident no.	1650124
Rated operating distance Sn	1.2 mm for sensor S01, 2 mm for sensor S02
Mounting condition	non-flush
Assured sensing range	≤ (0,81 x Sn) mm
Correction factors	St37 = 1; Al = 0.3; stainless steel = 0.7; Ms = 0.4
Repeatability	≤ 2 % of full scale
Temperature drift	10 %
Hysteresis	3...15 %
Ambient temperature	-25...+70 °C
Operating voltage	10...30VDC
Residual ripple	≤ 10 % U _{in}
DC rated operational current	≤ 200 mA
No-load current I ₀	≤ 15 mA
Residual current	≤ 0.1 mA
Rated insulation voltage	≤ 0.5 kV
Short-circuit protection	yes/ thermal
Voltage drop at I _n	≤ 1.8 V
Wire breakage / Reverse polarity protection	yes/ complete
Output function	4-wire, NO contact, PNP
Smallest operating current I _{in}	≤ 1 mA
Switching frequency	0.03 kHz
Design	monitoring kit for clamping technology, K08Q
Dimensions	47 x 18 x 18 mm
Housing material	metal, Trogamid
Material active area	Plastic, PA
Connection	male, M12 x 1
Cable quality	2 mm, grey, Lif9Y-11Y, PUR, 0.095, 0.11 m
Cable cross section	3 x 0.08 mm ²
Litz wire	40x0.05mm ²
Vibration resistance	55 Hz (1 mm)
Shock resistance	30 g (11 ms)
Protection class	IP67
MTTF	2283 years acc. to SN 29500 (Ed. 99) 40 °C
Power-on indication	LED green
Switching state	LED yellow / red

**Inductive sensor
power clamp monitor
NI2-K08Q-0,095/0,11-BDS-2AP6X3-H1141/S34**

TURCK

Industrial
Automation

Mounting instructions / Description



The sensor should only be mounted in the corresponding retainer.

The sensor is adjusted to the mounting characteristics of the retainer. Deviant mounting may cause unpredictable performance of the sensor.

Flush mounting without leaving a gap may lead to uncontrolled switching of the sensor.

**Inductive sensor
power clamp monitor
NI2-K08Q-0,095/0,11-BDS-2AP6X3-H1141/S34**

Wiring accessories

Type code	Ident no.	Description	Dimension drawing
RKC4.4T-2/TEL	6625013	Connection cable, female M12, straight, 4-pin, cable length: 2 m, sheath material: PVC, black; cULus approval; other cable lengths and qualities available, see www.turck.com	