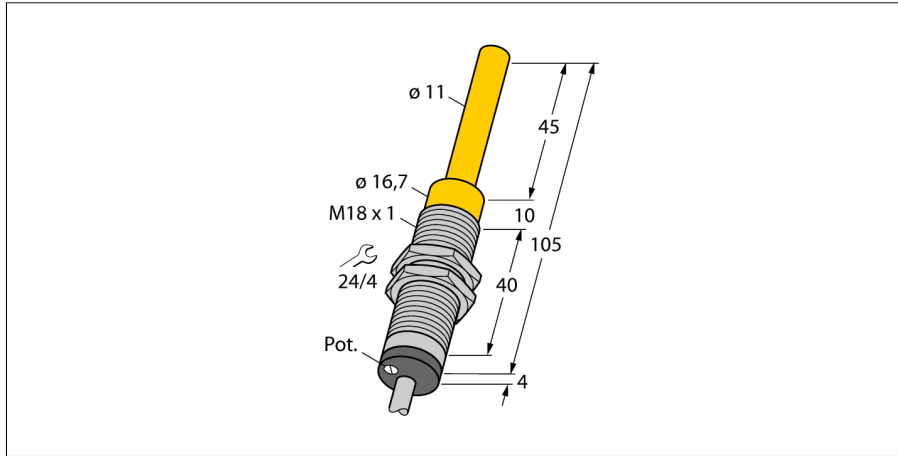
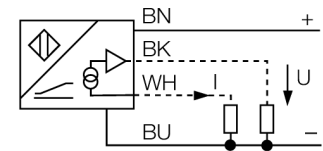


**Inductive sensor  
with analog output  
WI40-M18-LIU5**



- Threaded barrel, M18 x 1
- Chrome-plated brass
- Analog output (current and voltage)
- Potentiometer to adjust the characteristic slope
- Actuated via short-circuiting ring, blind hole or the like
- 4-wire, 15...30 VDC
- Analog output
- 0...10 V and 4...20 mA
- Cable connection

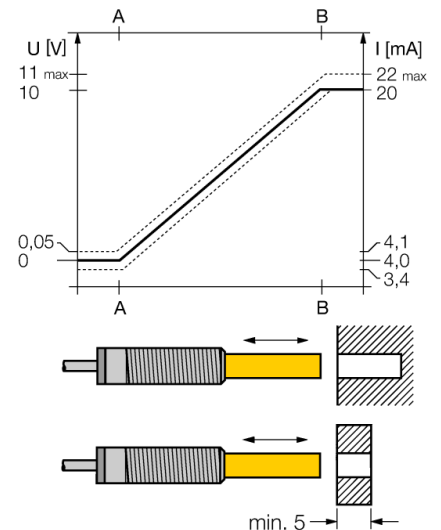
**Wiring diagram**



**Functional principle**

Inductive TURCK sensors with analog output accomplish simple control tasks. They provide a current, voltage or frequency signal proportional to the target's distance. The output signal is linear to the distance of the target over the entire sensing range.

**Measuring range**



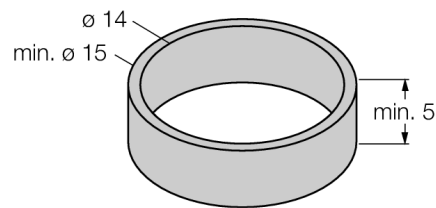
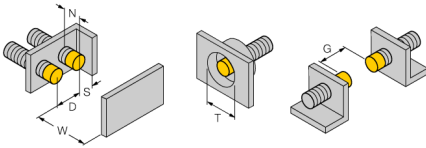
<b>Type code</b>	WI40-M18-LIU5
Ident no.	1536603
<b>Measuring range [A...B]</b>	0...40mm
Mounting condition	non-flush
Repeatability	≤ 1 % of measuring range  A - B
	≤ 0.5 %, after warm-up 0.5 h
Linearity deviation	≤ 2 %
Temperature drift	≤ ± 0.06 % / K
Ambient temperature	-25...+70 °C
<b>Operating voltage</b>	15...30VDC
Residual ripple	≤ 10 % U <sub>ss</sub>
No-load current I <sub>0</sub>	≤ 8 mA
Rated insulation voltage	≤ 0.5 kV
Short-circuit protection	yes
Wire breakage / Reverse polarity protection	yes/ complete
Output function	4-wire, analog output
Voltage output	0...10V
Current output	4...20mA
Load resistance voltage output	≥ 4.7 kΩ
Load resistance current output	≤ 0.4 kΩ
Measuring sequence frequency	40 Hz
<b>Design</b>	threaded barrel, M18 x 1
Dimensions	107.5 mm
Probe length	45 mm
Housing material	metal, CuZn, chrome-plated
Material active area	Plastic, PA
End cap	Plastic, EPTR
Max. tightening torque housing nut	25 Nm
Connection	cable
Cable quality	5.2 mm, LifYY, PVC, 2 m
Cable cross section	4 x 0.34 mm <sup>2</sup>
Vibration resistance	55 Hz (1 mm)
Shock resistance	30 g (11 ms)
Protection class	IP67
MTTF	751 years acc. to SN 29500 (Ed. 99) 40 °C
<b>Included in scope of supply</b>	brass ring

**Inductive sensor  
with analog output  
WI40-M18-LIU5**

**TURCK**

Industrial  
Automation

Distance D	3 x B
Distance W	2 x B
Distance T	5 x B
Distance S	1 x B
Distance G	3 x B
Distance N	55 mm
<hr/>	
Diameter of the active area B	Ø 18 mm



Use non-ferrous metals for ring or blind hole only.

The diameter of the blind hole depends on its wall thickness and the material.

Only the use of the NF-ring, which is included in the delivery, ensures that the values stated in the data sheet are observed.

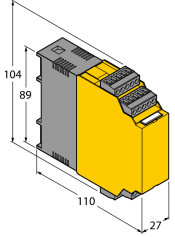
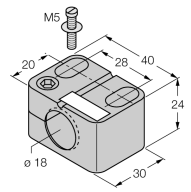
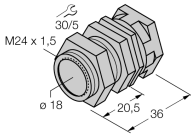
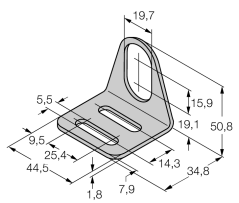
In case of non-observance or use of a blind hole, the measuring range may be reduced.

**Inductive sensor  
with analog output  
WI40-M18-LIU5**

**TURCK**

Industrial  
Automation

**Accessories**

Type code	Ident no.	Description	Dimension drawing
IM43-13-SR	7540041	Limit value monitor; 1-channel; input 0/4...20 mA or 0/2...10 V; supply of 2- or 3-wire transmitters/sensors; limit value adjustment via teach button; three relay outputs with one NO contact each; removable terminal blocks; 27 mm wide; universal voltage supply 20...250 VUC; further limit value monitors are described in our "Interface Technology" catalog.	
BST-18B	6947214	Fixing clamp for threaded barrel devices, with dead-stop; material: PA6	
QM-18	6945102	Quick-mount bracket with dead-stop; material: Chrome-plated brass Male thread M24 x 1.5. Note: The switching distance of proximity switches can be reduced by the use of quick-mount brackets.	
MW-18	6945004	Mounting bracket for threaded barrel devices; material: Stainless steel A2 1.4301 (AISI 304)	
BSS-18	6901320	Mounting bracket for smooth and threaded barrel devices; material: Polypropylene	