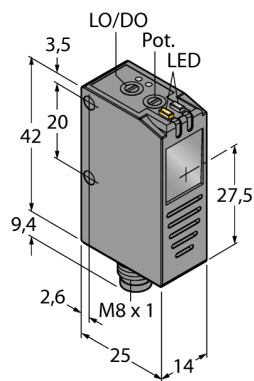
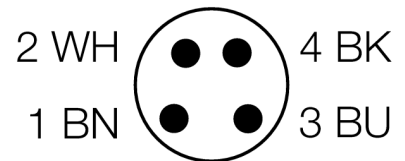
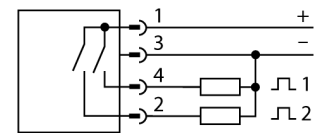


**Photoelectric sensor
retroreflective sensor with polarizing filter
for clear object detection
Q26PXLQ7**



- Male M8 x 1, 4-pin
- Protection class IP67
- Light or dark operation, adjustable
- Sensitivity adjusted via potentiometer
- Coaxial optics, reduced blind zone
- Operating voltage: 10...30 VDC
- PNP switching output
- Switching output for insufficient excess gain

Wiring diagram



Type code	Q26PXLQ7
Ident no.	3017129
Operating mode	retro-reflective sensor with polarisation filter
Light type	red
Wavelength	660 nm
Range	5...800 mm
Ambient temperature	-10...+55 °C
Operating voltage	12...30VDC
Residual ripple	< 10 % U _s
No-load current I ₀	≤ 15 mA
Short-circuit protection	yes
Reverse polarity protection	yes
Output function	2x NO, PNP
Switching frequency	4 kHz
Design	rectangular, Q26
Dimensions	25 x 14 x 42 mm
Housing material	plastic, ABS, black
Lens	glass
Connection	male, M8 x 1
Protection class	IP67
Power-on indication	LED green
Switching state	LED yellow

Functional principle

The Q26 is a retroreflective sensor for the detection of light, transparent and also opaque objects. The sensor is perfectly suited for the detection of PET bottles, glass jars, reflecting surfaces, LCD glasses or even semiconductor wafers. In addition to a coaxial optics, the sensor is also equipped with an auxiliary output that switches when excess gain is outside the normal range. The sensitivity is adjusted via potentiometer, in order to distinguish green from transparent bottles for example. Light or dark operation is adjusted via rotary switch.

**Photoelectric sensor
retroreflective sensor with polarizing filter
for clear object detection
Q26PXLQ7**

Accessories

Type code	Ident no.	Description	Dimension drawing
SMBLSTQ26	3019506	Mounting bracket, stainless steel, for Q26	
SMBLSTDLQ26	3018180	Mounting bracket, stainless steel, rectangular, for Q26	

Wiring accessories

Type code	Ident no.	Description	Dimension drawing
PKG4M-2/TEL	6625061	Connection cable, female M8, straight, 4-pin, cable length: 2 m, sheath material: PVC, black; cULus approval; other cable lengths and qualities available, see www.turck.com	
PKW4M-2/TEL	6625067	Connection cable, female M8, angled, 4-pin, cable length: 2 m, sheath material: PVC, black; cULus approval; other cable lengths and qualities available, see www.turck.com	

Function accessories

Type code	Ident no.	Description	Dimension drawing
BRT-60X40C	3044997	Rectangular reflector, reflection coefficient 1.48, material: acrylic, ambient temperature -20...+60 °C	