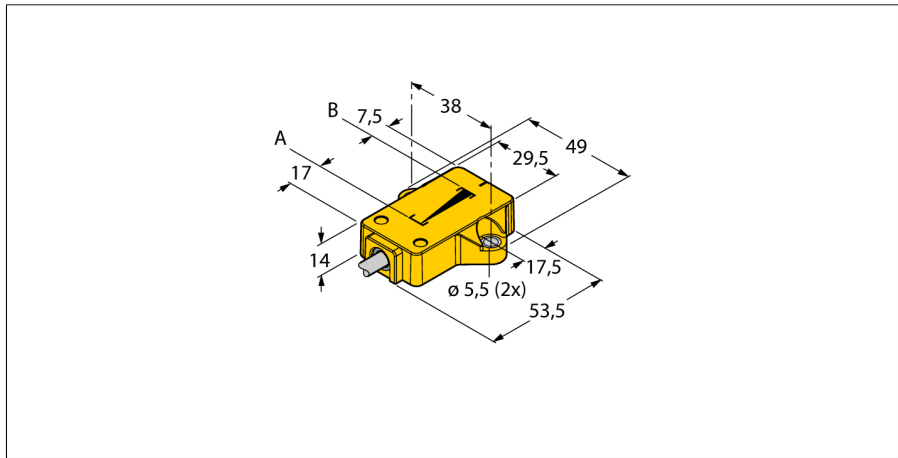


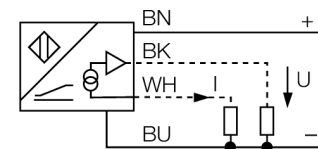
Inductive linear position sensor
Li25P1-QR14-LiU5X2



- Rectangular, plastic
- Many mounting possibilities
- P1-Ri-QR14/Q17L included in delivery
- LED indicates measuring range
- Immune to electromagnetic interferences
- Extremely short blind zones
- 12 bit resolution
- 4-wire, 15...30 VDC
- Analog output
- 0...10 V and 4...20 mA
- Cable connection

Type code	Li25P1-QR14-LiU5X2
Ident no.	1590751
Measuring range [A...B]	
Resolution	0,006 mm/12 bit
blind zone a	17 mm
blind zone b	7.5 mm
Linearity deviation	≤ 0.5 %
Temperature drift	≤ ± 0.01 % / K
Ambient temperature	-25...+70 °C
Operating voltage	
Residual ripple	≤ 10 % U _{ss}
No-load current I ₀	≤ 50 mA
Rated insulation voltage	≤ 0.5 kV
Short-circuit protection	yes
Wire breakage / Reverse polarity protection	yes/ yes (voltage supply)
Output function	4-wire, analog output
Voltage output	0...10V
Current output	4...20mA
Load resistance voltage output	≥ 4.7 kΩ
Load resistance current output	≤ 0.4 kΩ
Sample rate	500 Hz
Design	
Dimensions	rectangular, QR14
Housing material	53.5 x 49 x 14 mm
Connection	plastic, PBT
Cable quality	cable
Cable cross section	5.2 mm, LiYY, PVC, 2 m
Vibration resistance	4 x 0.34 mm ²
Shock resistance	55 Hz (1 mm)
Protection class	30 g (11 ms)
MTTF	IP67
	138 years acc. to SN 29500 (Ed. 99) 40 °C
Power-on indication	
Measuring range display	LED green
Included in scope of supply	multifunction LED, green positioning element P1-Li-QR14/Q17L

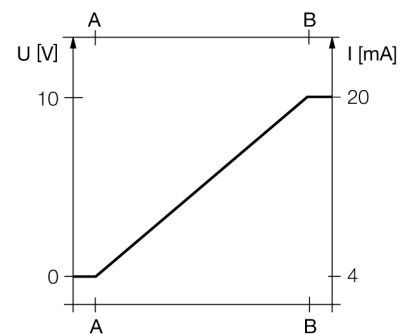
Wiring diagram



Functional principle

The measuring principle of inductive angle sensors is based on oscillation circuit coupling between the positioning element and the sensor. The output signal provided is proportional to the angle of the positioning element. The rugged sensors are wear and maintenance-free, thanks to the contactless operating principle. They convince through their excellent repeatability, resolution and linearity within a broad temperature range. Thanks to the innovative technology, electromagnetic AC and DC fields have no influence on the measured signal.

Characteristic

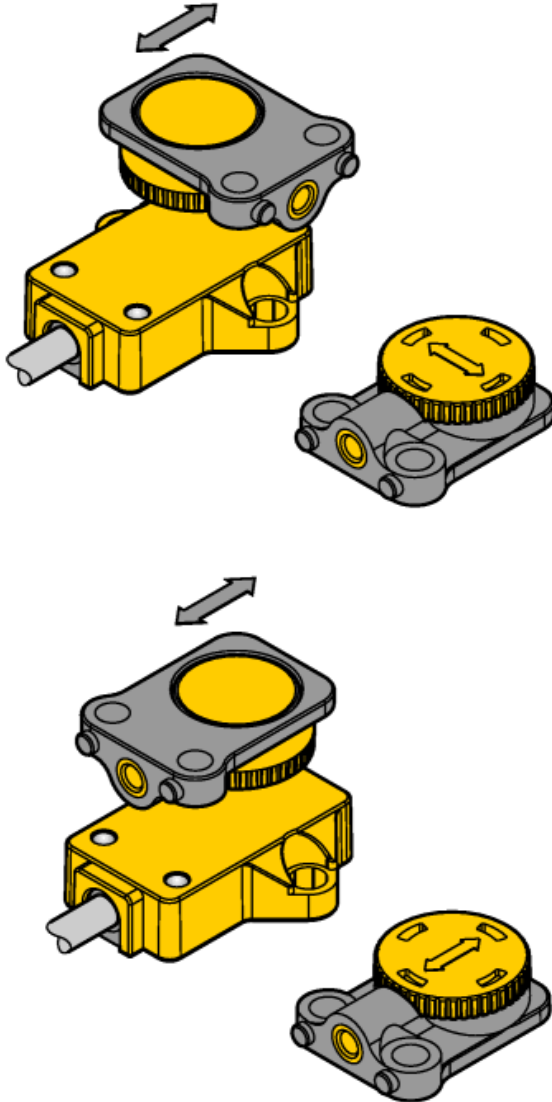


Inductive linear position sensor Li25P1-QR14-LiU5X2

TURCK

Industrial
Automation

Mounting instructions / Description



The positioning element can be mounted offset by 90°. This provides highest mounting flexibility. Based on the functional principle of RLC coupling, the sensor is immune to magnetized metal splinters and other interferences.

LED indications:

green steady:

Positioning element is in the measuring range

green flashing:

Positioning element has reached the end of the measuring range. This is indicated by a weaker signal.

off:

Positioning element is outside the coverage.

Inductive linear position sensor Li25P1-QR14-LiU5X2

TURCK

Industrial
Automation

Accessories

Type code	Ident no.	Description	Dimension drawing
P1-Li-QR14/Q17L	1590724	Floating positioning element; cross and longitudinal mounting	