



COUPLING RELAY, AC-3 4KW/400 V, 3-POLE,  
 SIZE S00, 1 NO, 24 V DC,  
 0.85...1.85 X US, 1.4 W,  
 SCREW CONNECTION, DIODE BUILT-IN

**General technical data:**

<b>product brand name</b>		SIRIUS
<b>Size of the contactor</b>		S00
<b>Protection class IP / on the front</b>		IP20
<b>Degree of pollution</b>		3
<b>Installation altitude / at a height over sea level / maximum</b>	m	2,000
<b>Ambient temperature / during operating</b>	°C	-25 ... +60
<b>Mechanical operating cycles as operating time</b>		
<ul style="list-style-type: none"> <li>• of the contactor / typical</li> </ul>		30,000,000

**Main circuit:**

<b>Number of NC contacts / for main contacts</b>		0
<b>Number of NO contacts / for main contacts</b>		3
<b>Operating current</b>		
<ul style="list-style-type: none"> <li>• at AC-1 / at 400 V                             <ul style="list-style-type: none"> <li>• at 40 °C ambient temperature / rated value</li> </ul> </li> </ul>	A	22
<ul style="list-style-type: none"> <li>• at AC-3 / at 400 V / rated value</li> </ul>	A	9
<ul style="list-style-type: none"> <li>• at AC-4 / at 400 V / rated value</li> </ul>	A	8.5
<ul style="list-style-type: none"> <li>• with 1 current path / at DC-1                             <ul style="list-style-type: none"> <li>• at 24 V / rated value</li> <li>• at 110 V / rated value</li> </ul> </li> </ul>	A	20
	A	2.1

<ul style="list-style-type: none"> <li>with 2 current paths in series / at DC-1               <ul style="list-style-type: none"> <li>at 24 V / rated value</li> <li>at 110 V / rated value</li> </ul> </li> <li>with 3 current paths in series / at DC-1               <ul style="list-style-type: none"> <li>at 24 V / rated value</li> <li>at 110 V / rated value</li> </ul> </li> <li>with 1 current path / at DC-3 / at DC-5               <ul style="list-style-type: none"> <li>at 24 V / rated value</li> <li>at 110 V / rated value</li> </ul> </li> <li>with 2 current paths in series / at DC-3 / at DC-5               <ul style="list-style-type: none"> <li>at 24 V / rated value</li> <li>at 110 V / rated value</li> </ul> </li> <li>with 3 current paths in series / at DC-3 / at DC-5               <ul style="list-style-type: none"> <li>at 24 V / rated value</li> <li>at 110 V / rated value</li> </ul> </li> </ul>	A	20
	A	12
	A	20
	A	20
	A	20
	A	0.15
	A	20
	A	0.35
	A	20
	A	20
<b>Service power</b>		
<ul style="list-style-type: none"> <li>at AC-2 / at 400 V / rated value</li> <li>at AC-3 / at 400 V / rated value</li> <li>at AC-4 / at 400 V / rated value</li> </ul>	kW	4
	kW	4
	W	4,000

Control circuit:		
<b>Design of the surge suppressor</b>		with diode
<b>Voltage type / of control feed voltage</b>		DC
<b>Operating range factor control supply voltage rated value / of the magnet coil</b>		
<ul style="list-style-type: none"> <li>for DC</li> </ul>		0.85 ... 1.85
<b>Pull-in power / of the solenoid / for DC</b>	W	1.4
<b>Holding power / of the solenoid / for DC</b>	W	1.4

Auxiliary circuit:		
<b>Contact reliability / of the auxiliary contacts</b>		1 faulty switching per 100 million (17 V, 1 mA)
<b>Number of NC contacts / for auxiliary contacts / instantaneous switching</b>		0
<b>Number of NO contacts / for auxiliary contacts / instantaneous switching</b>		1

Short-circuit:		
<b>Design of the fuse link</b>		
<ul style="list-style-type: none"> <li>for short-circuit protection of the auxiliary switch / required</li> <li>for short-circuit protection of the main circuit               <ul style="list-style-type: none"> <li>with type of assignment 1 / required</li> <li>at type of coordination 2 / required</li> </ul> </li> </ul>		fuse gL/gG: 10 A  fuse gL/gG: 35 A  fuse gL/gG: 20 A

### Installation/mounting/dimensions:

<b>Mounting type</b>		screw and snap-on mounting onto 35 mm standard mounting rail according to DIN EN 50022
<b>series installation</b>		Yes
<b>Width</b>	mm	45
<b>Height</b>	mm	57.5
<b>Depth</b>	mm	72
<b>Distance, to be maintained, to earthed part / sideways</b>	mm	6

### Connection type:

<b>Design of the electrical connection</b>		
<ul style="list-style-type: none"> <li>for main current circuit</li> <li>for auxiliary and control current circuit</li> </ul>		<p>screw-type terminals</p> <p>screw-type terminals</p>
<b>Type of the connectable conductor cross-section</b>		
<ul style="list-style-type: none"> <li>for main contacts                             <ul style="list-style-type: none"> <li>solid</li> <li>finely stranded                                     <ul style="list-style-type: none"> <li>with conductor end processing</li> </ul> </li> </ul> </li> <li>for AWG conductors / for main contacts</li> <li>for auxiliary contacts                             <ul style="list-style-type: none"> <li>solid</li> <li>finely stranded                                     <ul style="list-style-type: none"> <li>with conductor end processing</li> </ul> </li> </ul> </li> <li>for AWG conductors / for auxiliary contacts</li> </ul>		<p>2x (0.5 ... 1.5 mm<sup>2</sup>), 2x (0.75 ... 2.5 mm<sup>2</sup>), max. 2x (0.75 ... 4 mm<sup>2</sup>)</p> <p>2x (0.5 ... 1.5 mm<sup>2</sup>), 2x (0.75 ... 2.5 mm<sup>2</sup>)</p> <p>2x (20 ... 16), 2x (18 ... 14), 1x 12</p> <p>2x (0.5 ... 1.5 mm<sup>2</sup>), 2x (0.75 ... 2.5 mm<sup>2</sup>), max. 2x (0.75 ... 4 mm<sup>2</sup>)</p> <p>2x (0.5 ... 1.5 mm<sup>2</sup>), 2x (0.75 ... 2.5 mm<sup>2</sup>)</p> <p>2x (20 ... 16), 2x (18 ... 14), 1x 12</p>

### Certificates/approvals:

<b>General Product Approval</b>		<b>Functional Safety / Safety of Machinery</b>	<b>Declaration of Conformity</b>
   		<a href="#">Type Examination</a>	
<b>Test Certificates</b>	<b>Shipping Approval</b>		
<a href="#">Special Test Certificate</a>	   		
<b>other</b>			
<a href="#">Confirmation</a>	<a href="#">other</a>	<a href="#">Environmental Confirmations</a>	

### Further information:

**Information- and Downloadcenter (Catalogs, Brochures,...)**

<http://www.siemens.com/industrial-controls/catalogs>

**Industry Mall (Online ordering system)**

<http://www.siemens.com/industrial-controls/mall>

**Cax online generator:**

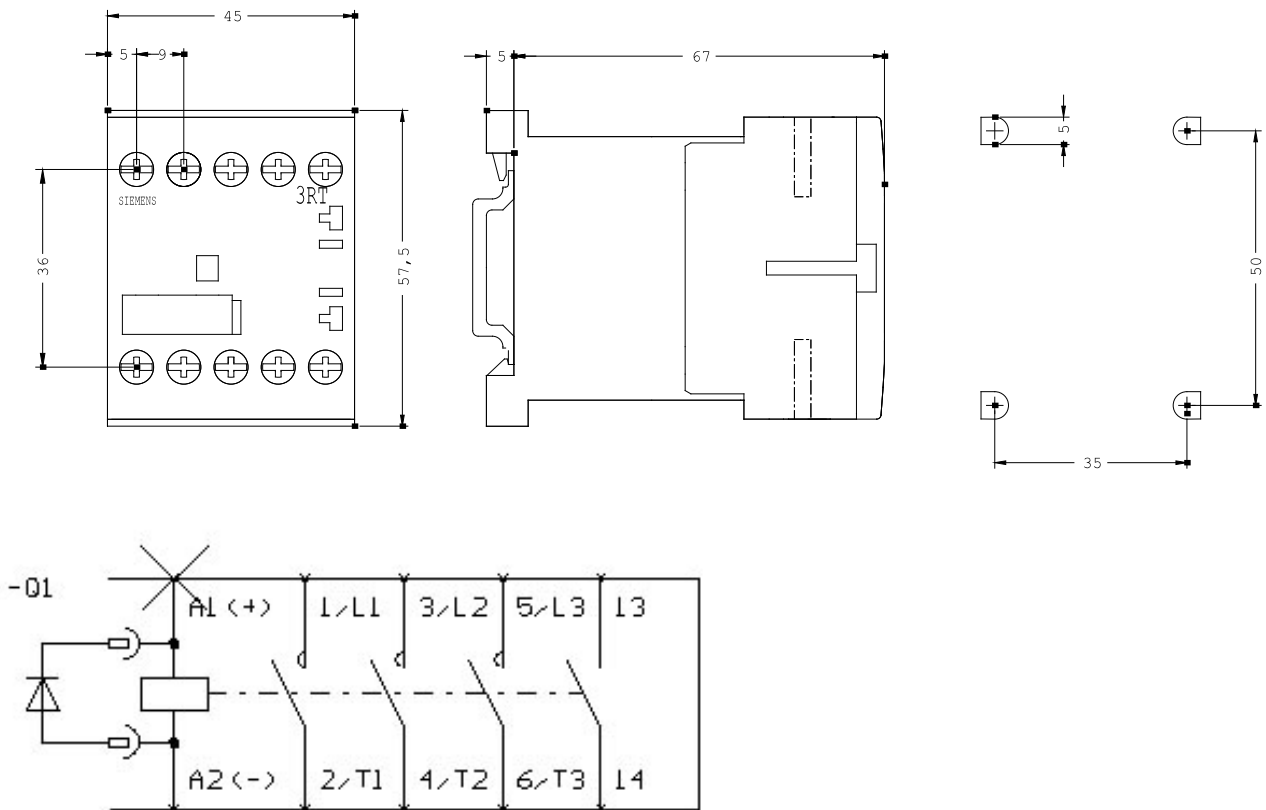
<http://www.siemens.com/cax>

**Service&Support (Manuals, Certificates, Characteristics, FAQs,...)**

<http://support.automation.siemens.com/WW/view/en/3RT1016-1VB41/all>

**Image database (product images, 2D dimension drawings, 3D models, device circuit diagrams, ...)**

[http://www.automation.siemens.com/bilddb/cax\\_en.aspx?mlfb=3RT1016-1VB41](http://www.automation.siemens.com/bilddb/cax_en.aspx?mlfb=3RT1016-1VB41)



last change:

Aug 4, 2014