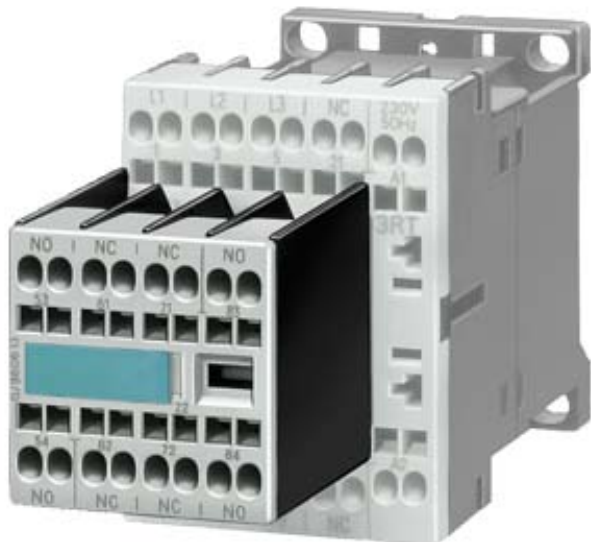


CONT., AC-3, 4KW/400V, 1NO, 2NO+2NC,  
AC100V 50HZ/110V 60HZ, 3-POLE,  
SIZE S0...S12. CAGE CLAMP CONN.



### General technical data:

<b>product brand name</b>		SIRIUS
<b>Size of the contactor</b>		S00
<b>Protection class IP / on the front</b>		IP20
<b>Degree of pollution</b>		3
<b>Installation altitude / at a height over sea level / maximum</b>	m	2,000
<b>Ambient temperature / during operating</b>	°C	-25 ... +60
<b>Mechanical operating cycles as operating time</b>		
<ul style="list-style-type: none"> <li>• of the contactor / typical</li> </ul>		30,000,000
<ul style="list-style-type: none"> <li>• of the contactor with added auxiliary switch block / typical</li> </ul>		10,000,000
<ul style="list-style-type: none"> <li>• of the contactor with added electronics-compatible auxiliary switch block / typical</li> </ul>		5,000,000

### Main circuit:

<b>Number of NC contacts / for main contacts</b>		0
<b>Number of NO contacts / for main contacts</b>		3
<b>Operating current</b>		
<ul style="list-style-type: none"> <li>• at AC-1 / at 400 V <ul style="list-style-type: none"> <li>• at 40 °C ambient temperature / rated value</li> </ul> </li> </ul>	A	22
<ul style="list-style-type: none"> <li>• at AC-3 / at 400 V / rated value</li> </ul>	A	9
<ul style="list-style-type: none"> <li>• at AC-4 / at 400 V / rated value</li> </ul>	A	8.5

• with 1 current path / at DC-1	A	20
• at 24 V / rated value	A	2.1
• at 110 V / rated value		
• with 2 current paths in series / at DC-1	A	20
• at 24 V / rated value	A	12
• at 110 V / rated value		
• with 3 current paths in series / at DC-1	A	20
• at 24 V / rated value	A	20
• at 110 V / rated value		
• with 1 current path / at DC-3 / at DC-5	A	20
• at 24 V / rated value	A	0.15
• at 110 V / rated value		
• with 2 current paths in series / at DC-3 / at DC-5	A	20
• at 24 V / rated value	A	0.35
• at 110 V / rated value		
• with 3 current paths in series / at DC-3 / at DC-5	A	20
• at 24 V / rated value	A	20
• at 110 V / rated value		
<b>Service power</b>		
• at AC-2 / at 400 V / rated value	kW	4
• at AC-3 / at 400 V / rated value	kW	4
• at AC-4 / at 400 V / rated value	W	4,000

Control circuit:		
<b>Voltage type / of control feed voltage</b>		AC
<b>Operating range factor control supply voltage rated value / of the magnet coil</b>		
• at 60 Hz		
• for AC		0.8 ... 1.1
<b>Apparent pull-in power / of the solenoid / for AC</b>	V·A	31.7
<b>Apparent holding power / of the solenoid / for AC</b>	V·A	5.1
<b>Inductive power factor / with the pull-in power of the coil</b>		0.77
<b>Inductive power factor / with the pull-in power of the coil</b>		0.27

Auxiliary circuit:		
<b>Contact reliability / of the auxiliary contacts</b>		1 faulty switching per 100 million (17 V, 1 mA)
<b>Number of NC contacts / for auxiliary contacts / instantaneous switching</b>		2
<b>Number of NO contacts / for auxiliary contacts / instantaneous switching</b>		2

### Short-circuit:

<b>Design of the fuse link</b>	• for short-circuit protection of the auxiliary switch / required	fuse gL/gG: 10 A
	• for short-circuit protection of the main circuit	fuse gL/gG: 35 A
	• with type of assignment 1 / required	fuse gL/gG: 20 A
	• at type of coordination 2 / required	

### Installation/mounting/dimensions:

<b>Mounting type</b>		screw and snap-on mounting onto 35 mm standard mounting rail according to DIN EN 50022
<b>series installation</b>		Yes
<b>Width</b>	mm	45
<b>Height</b>	mm	60
<b>Depth</b>	mm	114
<b>Distance, to be maintained, to earthed part / sideways</b>	mm	6

### Connection type:

<b>Design of the electrical connection</b>	• for main current circuit	Cage Clamp terminals
	• for auxiliary and control current circuit	Cage Clamp terminals
<b>Type of the connectable conductor cross-section</b>	• for main contacts	
	• solid	2x (0.25 ... 2.5 mm <sup>2</sup> )
	• finely stranded	
	• with conductor end processing	2x (0.25 ... 1.5 mm <sup>2</sup> )
	• without conductor final cutting	2x (0.25 ... 2.5 mm <sup>2</sup> )
	• for AWG conductors / for main contacts	2x (24 ... 14)
	• for auxiliary contacts	
	• solid	2x (0.25 ... 2.5 mm <sup>2</sup> )
• finely stranded		
	• with conductor end processing	2x (0.25 ... 1.5 mm <sup>2</sup> )
	• without conductor final cutting	2x (0.25 ... 2.5 mm <sup>2</sup> )
	• for AWG conductors / for auxiliary contacts	2x (24 ... 14)

### Certificates/approvals:

General Product Approval

Functional Safety / Safety of Machinery

Declaration of Conformity



[Type Examination](#)



Test Certificates

[Special Test Certificate](#)

Shipping Approval



Shipping Approval

other



[Confirmation](#)

[other](#)

[Environmental Confirmations](#)

Further information:

Information- and Downloadcenter (Catalogs, Brochures,...)

<http://www.siemens.com/industrial-controls/catalogs>

Industry Mall (Online ordering system)

<http://www.siemens.com/industrial-controls/mall>

Cax online generator:

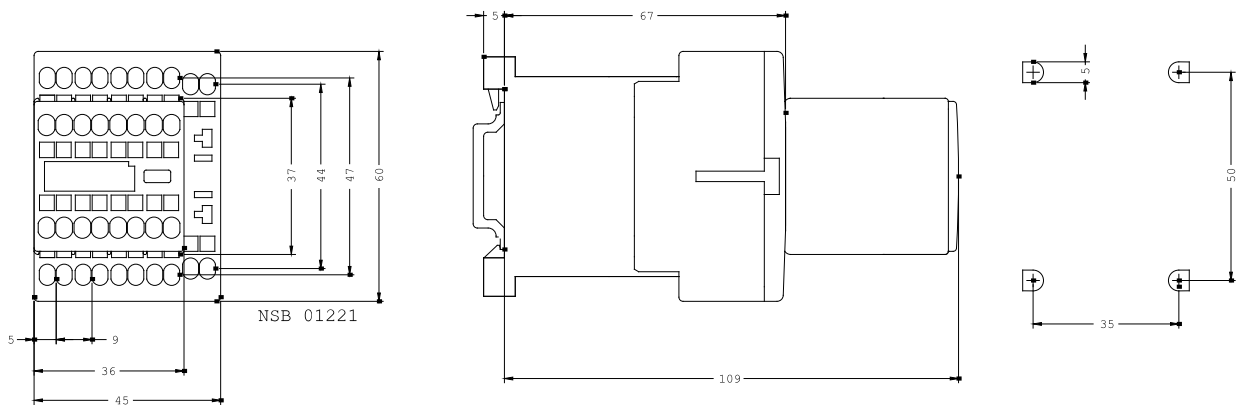
<http://www.siemens.com/cax>

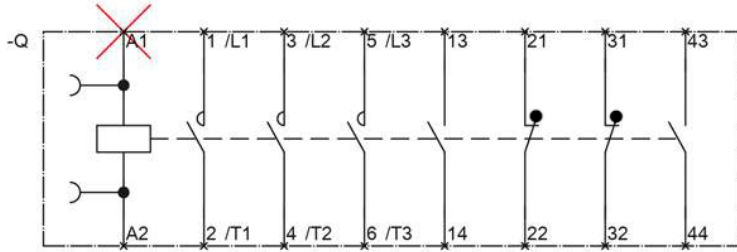
Service&Support (Manuals, Certificates, Characteristics, FAQs,...)

<http://support.automation.siemens.com/WW/view/en/3RT1016-2AG14/all>

Image database (product images, 2D dimension drawings, 3D models, device circuit diagrams, ...)

[http://www.automation.siemens.com/bilddb/cax\\_en.aspx?mlfb=3RT1016-2AG14](http://www.automation.siemens.com/bilddb/cax_en.aspx?mlfb=3RT1016-2AG14)





last change:

Aug 4, 2014