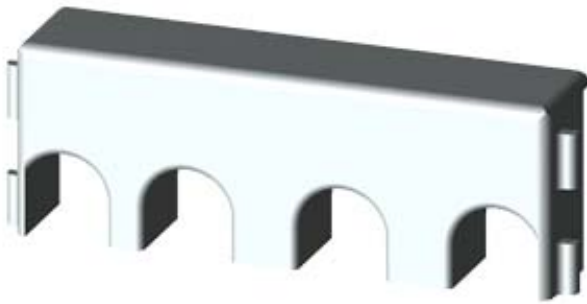


TOUCH PROTECTION COVER FOR 3RU21 ON  
 OUTGOING SIDE SZ S00,  
 MAIN CIRCUIT: RING CABLE LUG



**General technical data:**

<b>product brand name</b>		SIRIUS
<b>Product designation</b>		terminal cover
<b>Design of the product</b>		shock protection for ring cable lug connection
<b>Ambient temperature</b>		
• during storage	°C	-55 ... +80
• during operating	°C	-20 ... +60

**Installation/mounting/dimensions:**

<b>Mounting type</b>		clip-on
<b>Width</b>	mm	45
<b>Height</b>	mm	18
<b>Depth</b>	mm	9

General Product Approval



Test Certificates

[Type Test Certificates/Test Report](#)

Shipping Approval



other

[Environmental Confirmations](#)

Further information:

Information- and Downloadcenter (Catalogs, Brochures,...)

<http://www.siemens.com/industrial-controls/catalogs>

Industry Mall (Online ordering system)

<http://www.siemens.com/industrial-controls/mall>

CAX-Online-Generator

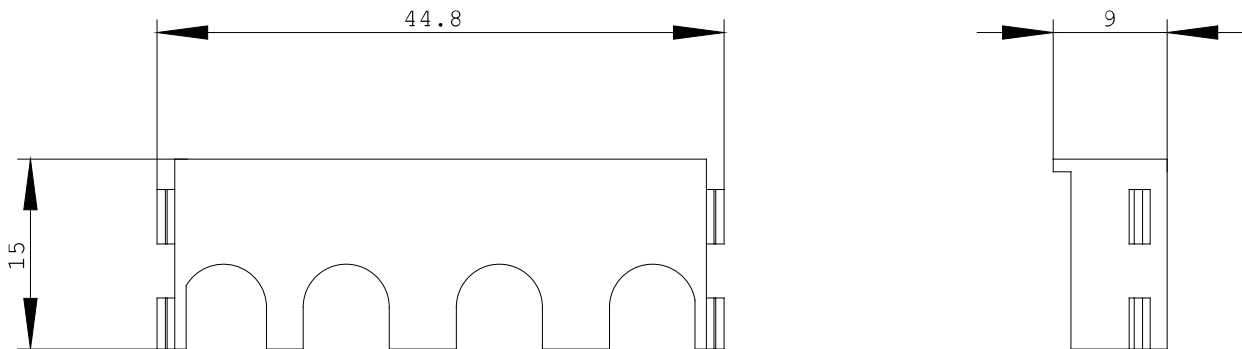
<http://www.siemens.com/cax>

Service&Support (Manuals, Certificates, Characteristics, FAQs,...)

<http://support.automation.siemens.com/WWW/view/en/3RU2916-3BJ20/all>

Image database (product images, 2D dimension drawings, 3D models, device circuit diagrams, ...)

[http://www.automation.siemens.com/bilddb/cax\\_en.aspx?mlfb=3RU2916-3BJ20](http://www.automation.siemens.com/bilddb/cax_en.aspx?mlfb=3RU2916-3BJ20)



last change:

Mar 17, 2014