

CIRCUIT-BREAKER 22...32 A,  
N-RELEASE 416 A, SIZE S2,  
MOTOR PROTECTION CLASS 10 SCREW CONNECTION  
STANDARD BREAKING CAPACITY MULTIUNIT-PACKING  
PACK = 24 UNITS

General technical data:		
product brand name		SIRIUS
product designation		circuit breaker
Size of the circuit-breaker		S2
Number of poles / for main current circuit		3
<b>Product function</b> <ul style="list-style-type: none"> <li>• removable terminal for auxiliary and control circuit</li> <li>• overload protection</li> <li>• phase disturbance recognition</li> <li>• short-circuit to earth recognition</li> </ul>		No Yes Yes No
<b>Product component</b> <ul style="list-style-type: none"> <li>• auxiliary switch</li> <li>• undervoltage release mechanism</li> <li>• trip indicator</li> </ul>		No No No
<b>Product extension</b> <ul style="list-style-type: none"> <li>• auxiliary switch</li> <li>• optional / motor drive</li> </ul>		Yes Yes
Impulse voltage resistance / rated value	V	6,000
Protection class IP / on the front		IP20
Protection against electrical shock		finger-safe
Installation altitude / at a height over sea level / maximum	m	2,000
Resistance against shock		25g / 11 ms
<b>Ambient temperature</b> <ul style="list-style-type: none"> <li>• during transport</li> <li>• during storage</li> <li>• during operating</li> </ul>	°C °C °C	-50 ... +80 -50 ... +80 -20 ... +70
Active power loss / total / typical	W	15
Main circuit:		
Operating voltage / rated value	V	690
type of voltage		AC/DC

<b>Service power / at AC-3 / at 400 V / rated value</b>	kW	15
<b>Operational current / at AC-3 / at 400 V / rated value</b>	A	32
<b>Mechanical operating cycles as operating time / of the main contacts / typical</b>		50,000
<b>Frequency of operation / at AC-3 / according to IEC 60947-6-2</b>	1/h	15

#### Auxiliary circuit:

**Number of change-over switches / for auxiliary contacts**

0

#### Protection function:

**Trip class**

CLASS 10

**Adjustable response current / of the current-dependent overload release**

A 22 ... 32

**Breaking capacity limit short-circuit current (I<sub>cu</sub>)**

- at 400 V / rated value
- at 500 V / rated value
- at 690 V / rated value

kA 50  
kA 10  
kA 4

#### Installation/mounting/dimensions:

**Type of mounting**

screw and snap-on mounting onto 35 mm standard mounting rail according to DIN EN 50022

**mounting position**

any

**Depth**

mm 149

**Height**

mm 140

**Width**

mm 55

#### Connections:

**Arrangement of electrical connectors / for main current circuit**

front side

**Design of the electrical connection**

- for main current circuit
- for auxiliary and control current circuit

screw-type terminals with box terminals  
screw-type terminals

**Type of the connectable conductor cross-section**

- for main contacts
  - solid
  - finely stranded
    - with conductor end processing
  - stranded
- for AWG conductors / for main contacts

2x (0.75 ... 16 mm<sup>2</sup>)  
2x (0.75 ... 16 mm<sup>2</sup>), 0.75 ... 25 mm<sup>2</sup>  
2x (0.75 ... 25 mm<sup>2</sup>), 0.75 ... 35 mm<sup>2</sup>  
2x (18 ... 2), 1x (18 ... 2)

#### Certificates/approvals:

General Product Approval



Declaration of Conformity

Test Certificates

[Special Test Certificate](#)

Shipping Approval



other

[Confirmation](#)

[Declaration of Conformity](#)

[other](#)

[Environmental Confirmations](#)

Further information:

Information- and Downloadcenter (Catalogs, Brochures,...)

<http://www.siemens.com/industrial-controls/catalogs>

Industry Mall (Online ordering system)

<http://www.siemens.com/industrial-controls/mall>

Cax online generator:

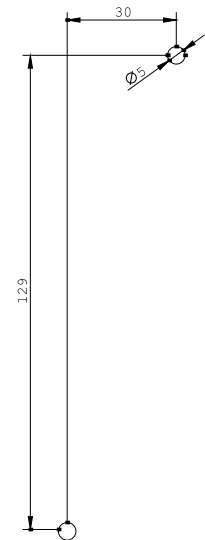
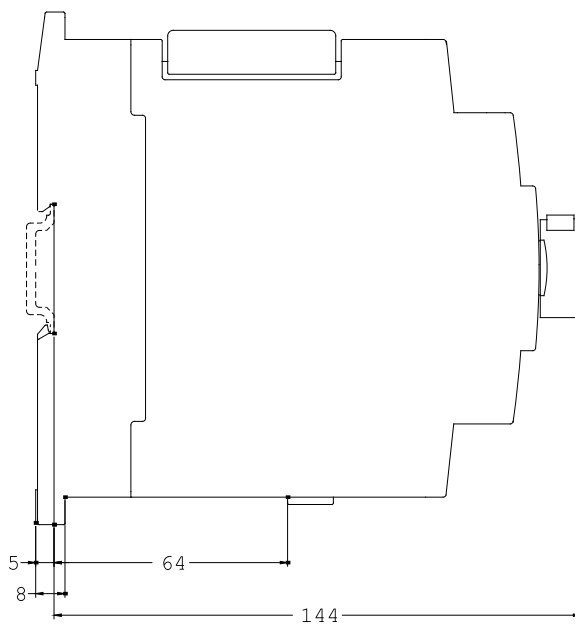
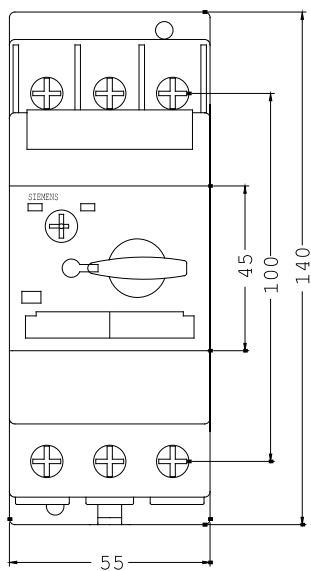
<http://www.siemens.com/cax>

Service&Support (Manuals, Certificates, Characteristics, FAQs,...)

<http://support.automation.siemens.com/WW/view/en/3RV1031-4EA10-ZW95/all>

Image database (product images, 2D dimension drawings, 3D models, device circuit diagrams, ...)

[http://www.automation.siemens.com/bilddb/cax\\_en.aspx?mlfb=3RV1031-4EA10-ZW95](http://www.automation.siemens.com/bilddb/cax_en.aspx?mlfb=3RV1031-4EA10-ZW95)



last change:

Feb 11, 2013