

CIRCUIT-BREAKER 28...40 A,
N-RELEASE 520 A, SIZE S2,
MOTOR PROTECTION CLASS 10 SCREW CONNECTION
STANDARD BREAKING CAPACITY REUSABLE PACKING
PACKING = 24 ITEMS

General technical data:		
product brand name		SIRIUS
product designation		circuit breaker
Size of the circuit-breaker		S2
Number of poles / for main current circuit		3
Product function <ul style="list-style-type: none"> • removable terminal for auxiliary and control circuit • overload protection • phase disturbance recognition • short-circuit to earth recognition 		No Yes Yes No
Product component <ul style="list-style-type: none"> • auxiliary switch • undervoltage release mechanism • trip indicator 		No No No
Product extension <ul style="list-style-type: none"> • auxiliary switch • optional / motor drive 		Yes Yes
Impulse voltage resistance / rated value	V	6,000
Protection class IP / on the front		IP20
Protection against electrical shock		finger-safe
Installation altitude / at a height over sea level / maximum	m	2,000
Resistance against shock		25g / 11 ms
Ambient temperature <ul style="list-style-type: none"> • during transport • during storage • during operating 	°C °C °C	-50 ... +80 -50 ... +80 -20 ... +70
Active power loss / total / typical	W	20
Main circuit:		
Operating voltage / rated value	V	690
type of voltage		AC/DC

Service power / at AC-3 / at 400 V / rated value	kW	18.5
Operational current / at AC-3 / at 400 V / rated value	A	40
Mechanical operating cycles as operating time / of the main contacts / typical		50,000
Frequency of operation / at AC-3 / according to IEC 60947-6-2	1/h	15

Auxiliary circuit:

Number of change-over switches / for auxiliary contacts

0

Protection function:

Trip class

CLASS 10

Adjustable response current / of the current-dependent overload release

A 28 ... 40

Breaking capacity limit short-circuit current (I_{cu})

- at 400 V / rated value
- at 500 V / rated value
- at 690 V / rated value

kA 50
kA 10
kA 4

Installation/mounting/dimensions:

Type of mounting

screw and snap-on mounting onto 35 mm standard mounting rail according to DIN EN 50022

mounting position

any

Depth

mm 149

Height

mm 140

Width

mm 55

Connections:

Arrangement of electrical connectors / for main current circuit

front side

Design of the electrical connection

- for main current circuit
- for auxiliary and control current circuit

screw-type terminals with box terminals
screw-type terminals

Type of the connectable conductor cross-section

- for main contacts
 - solid
 - finely stranded
 - with conductor end processing
 - stranded
- for AWG conductors / for main contacts

2x (0.75 ... 16 mm²)
2x (0.75 ... 16 mm²), 0.75 ... 25 mm²
2x (0.75 ... 25 mm²), 0.75 ... 35 mm²
2x (18 ... 2), 1x (18 ... 2)

Certificates/approvals:

General Product Approval

For use in
hazardous
locations



CCC



CSA



GOST



KETI



UL



ATEX

Declaration of Conformity



EG-Konf.

Test Certificates

[Special Test
Certificate](#)

Shipping Approval



ABS



BUREAU
VERITAS



DNV



LRS



RMRS

other

[Confirmation](#)

[Declaration of
Conformity](#)

[other](#)

[Environmental
Confirmations](#)

Further information:

Information- and Downloadcenter (Catalogs, Brochures,...)

<http://www.siemens.com/industrial-controls/catalogs>

Industry Mall (Online ordering system)

<http://www.siemens.com/industrial-controls/mall>

Cax online generator:

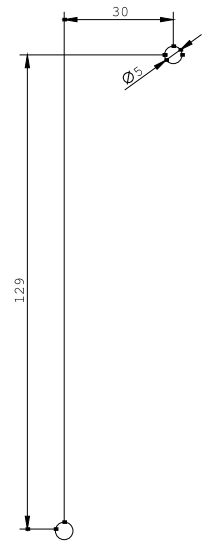
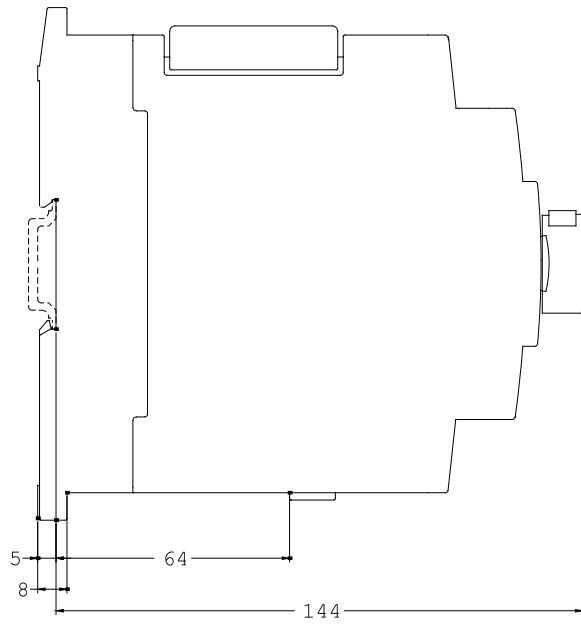
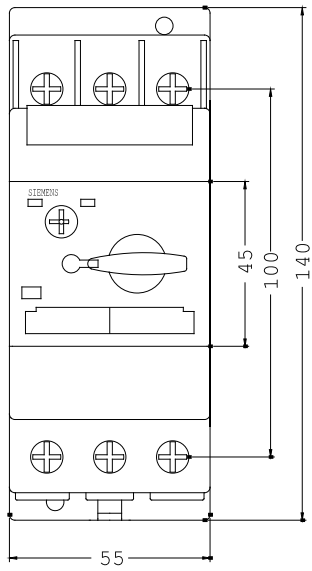
<http://www.siemens.com/cax>

Service&Support (Manuals, Certificates, Characteristics, FAQs,...)

<http://support.automation.siemens.com/WW/view/en/3RV1031-4FA10-ZX95/all>

Image database (product images, 2D dimension drawings, 3D models, device circuit diagrams, ...)

http://www.automation.siemens.com/bilddb/cax_en.aspx?mlfb=3RV1031-4FA10-ZX95



last change:

Feb 11, 2013